

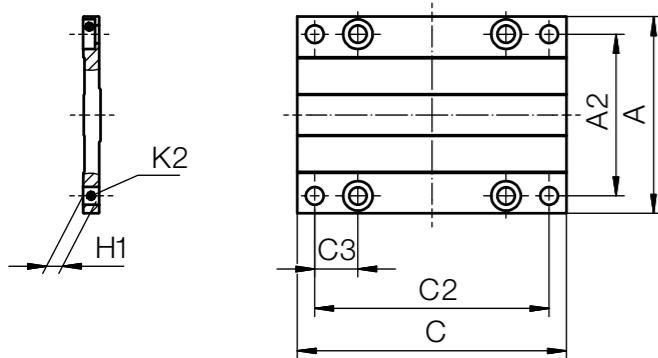
Carriage plates for drylin® W hybrid roller bearings



With four pillow blocks and the mounting plate, a linear carriage can be installed in less than a minute. Mounting plates are available in 3 lengths in each installation size and width.

- Robust corrosion-resistant anodised aluminium
- A variety of combinations of liners/bearings/slide plates are possible, also with manual clamp
- Required combination bearing and mounting plate also available pre-assembled

i **Modular system:**
Can be combined with the complete drylin® linear bearing product range. 4 screws included in delivery.



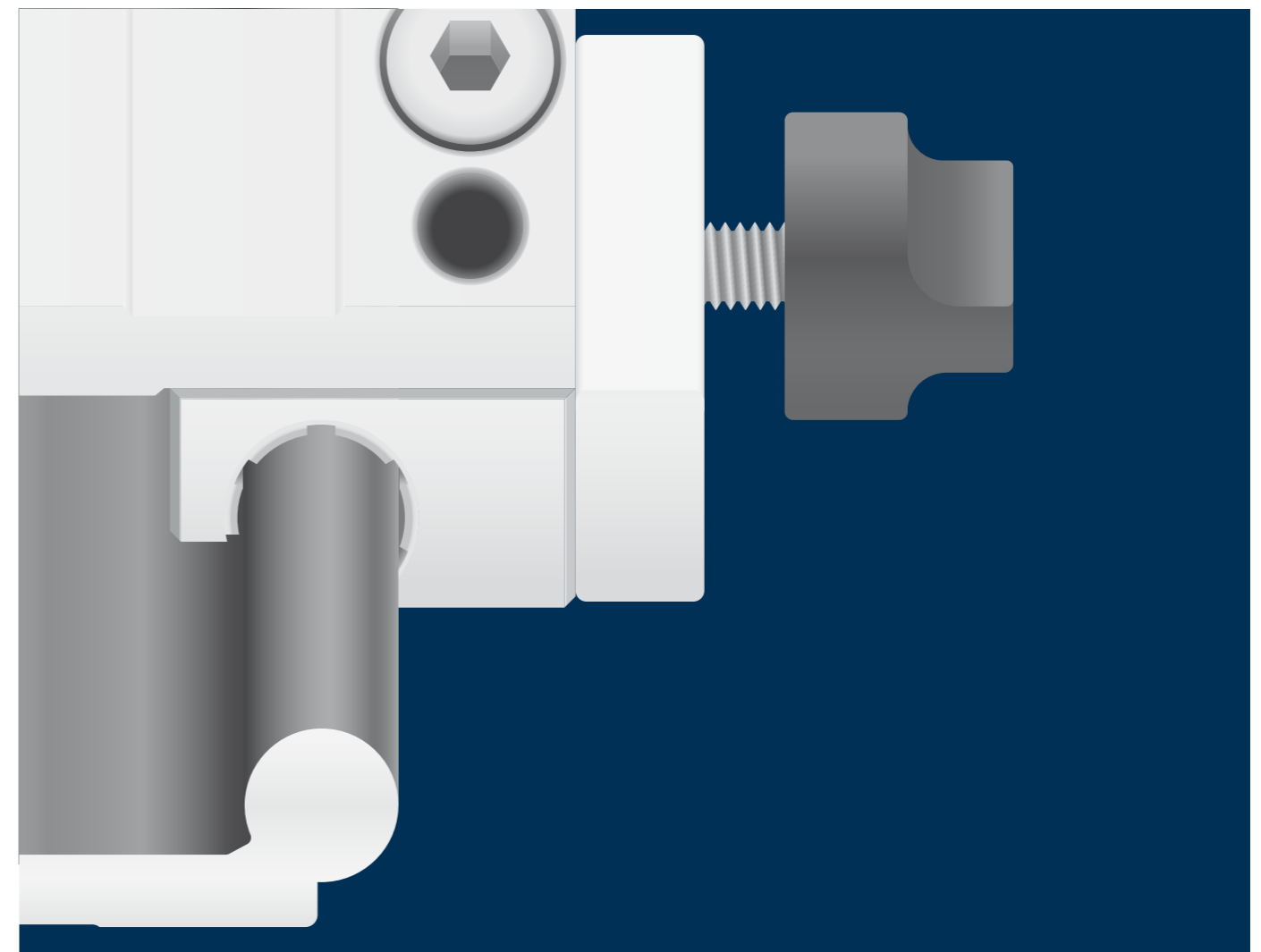
Technical data and dimensions [mm]

Part No.		C	A	H1	A2	K2	Mounting screws included
WWYR-10-30-08-AL	New	80	63	6.5	50	M6	M6
WWYR-10-30-10-AL	New	100	63	6.5	50	M6	M6
WWYR-10-30-15-AL	New	150	63	6.5	50	M6	M6
WWYR-10-40-10-AL	New	100	73	6.5	60	M6	M6
WWYR-10-40-15-AL	New	150	73	6.5	60	M6	M6
WWYR-10-40-20-AL	New	200	73	6.5	60	M6	M6
WWYR-10-80-10-AL	New	100	107	6.5	94	M6	M6
WWYR-10-80-15-AL	New	150	107	6.5	94	M6	M6
WWYR-10-80-20-AL	New	200	107	6.5	94	M6	M6
WWYR-10-120-10-AL	New	100	153	6.5	140	M6	M6
WWYR-10-120-15-AL	New	150	153	6.5	140	M6	M6
WWYR-10-120-20-AL	New	200	153	6.5	140	M6	M6
WWYR-16-60-10-AL	New	100	104	8.5	86	M8	M8
WWYR-16-60-15-AL	New	150	104	8.5	86	M8	M8
WWYR-16-60-20-AL	New	200	104	8.5	86	M8	M8
WWYR-20-80-15-AL	New	150	134	8.5	116	M8	M8
WWYR-20-80-20-AL	New	200	134	8.5	116	M8	M8
WWYR-20-80-25-AL	New	250	134	8.5	116	M8	M8

Suitable for rails ► Page 992, 993, 1010

Suitable for bearings ► Page 1011, 1012, 1013, 1014

Available from stock



drylin® linear technology – Accessories

Manual clamps

Liners

End caps

Slot nuts

Clamps

