

---

 TECHNICAL DATA SHEET

# PMACLIP - BFH-0 - System support

## One-piece, with safety lid

### PMA




#### Applications:

- In machine building and installation applications

#### Features & Benefits:

- One-piece construction
- Very high impact resistance
- Optimal axial strain relief due to integrated rib
- Suitable for overhead installations due to safety lid
- High retention forces
- Quick mounting due to single hole fixing
- Very good chemical properties
- Fits both conduit profiles - fine (T) and coarse (G)
- Fits to rail for system supports FHS

#### Materials:

- High-grade, specially formulated polyamide 6

#### Compatible with:

- PMAFLEX Pro Conduits
- PMAFLEX Multilayer Conduits
- PMAFLEX Conduits
- PMA Smart Line Conduits

#### Weathering resistance:

- Very good UV resistance and weathering characteristics, particularly in black

#### Colour:

- Black
- Grey

#### Chemical properties:

- Please refer to [www.pma.ch](http://www.pma.ch) (Technical Information / Chemical Resistance)

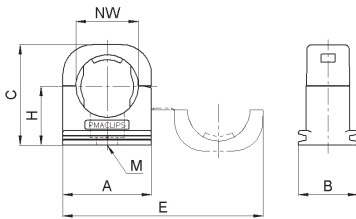
#### Environmental properties:

- Free from halogens and cadmium
- RoHS and REACH compliant

**Product selection:**

Part no.		Conduit size	Dimensions in mm (nom.)						Weight	Packing unit
black	grey		H	M	E	A	B	C		
		NW							kg/100 pcs	pcs/PU
BFH-07-0	SFH-07-0	7	13.5	M4	40.5	17.0	20.0	21.5	0.30	100
BFH-10-0	SFH-10-0	10	15.5	M5	47.5	20.5	20.0	24.5	0.30	100
BFH-12-0	SFH-12-0	12	16.5	M5	54.5	24.0	20.0	27.0	0.40	100
BFH-17-0	SFH-17-0	17	20.0	M6	68.0	30.0	20.0	34.0	0.60	100
BFH-23-0	SFH-23-0	23	24.0	M6	85.0	38.5	20.0	42.0	0.90	100
BFH-29-0	SFH-29-0	29	27.0	M6	99.0	45.5	20.0	48.0	1.10	100
BFH-36-0	SFH-36-0	36	31.0	M6	119.0	55.5	20.0	56.0	1.50	50
BFH-48-0	SFH-48-0	48	37.0	M6	143.0	67.5	20.0	68.0	1.90	20

Our customer service dept. or local distribution partner will be pleased to help you concerning product availability and lead time



Mechanical Properties:	Value:	Test parameters:	Test method:
Tensile modulus	1'200 ... 3'700 N/mm <sup>2</sup>		ISO 527
Tensile strength	45 ... 65 N/mm <sup>2</sup>		ISO 527
Notched bar impact test	4 ... 20 kJ/m <sup>2</sup>		ISO 180/1C

Thermal properties:	Value:	Test parameters:	Test method:
Continuous application temperature	- 50 ... + 105 °C		PMA DO 9.21-4510
Upper application temperature	+ 120 °C	(20'000 h)	PMA DO 9.21-4360
Short-term	+ 160 °C	(168 h)	PMA DO 9.21-4360

**Content of delivery:**

- System support

**Assembly instructions:**

- Please consider the appropriate assembly instructions on [www.pma.ch](http://www.pma.ch)

ABB Switzerland Ltd,  
PMA Cable Protection  
Aathalstrasse 90  
8610 Uster, Switzerland  
Phone: +41 58 585 00 11  
pma-info@ch.abb.com  
[www.pma.ch](http://www.pma.ch)

Let's write the future.  
Together. **abb.com**

We reserve the right to make technical changes or modify the contents of this document without prior notice. With regard to purchase orders, the agreed particulars shall prevail. ABB Installation Products Inc. does not accept any responsibility whatsoever for potential errors or possible lack of information in this document.

We reserve all rights in this document and in the subject matter and illustrations contained therein. Any reproduction, disclosure to third parties or utilization of its contents – in whole or in parts – is forbidden without prior written consent of ABB Inc. Copyright© 2019 ABB Installation Products Inc. All rights reserved

