

Sensor with 2.5 m. cable

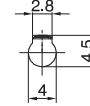
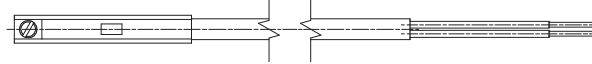
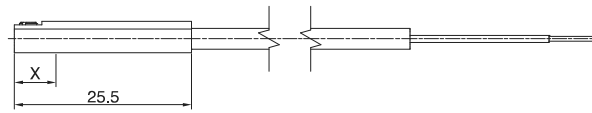
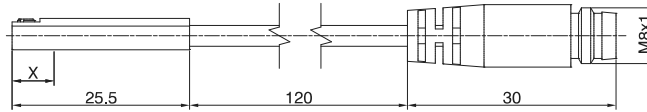


Weight g 22

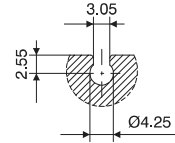
Sensor with cable and M8 connector



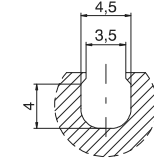
Weight g 10



Slot detail type "C"



Slot detail type "D"



Ordering code

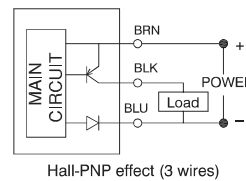
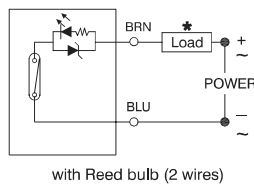
Ampulla Reed sensors, with led, Universal, N.O. (Normally open)

		X=point of commutation
1581.U	(2 wires) cable 2.5 mt.	10 mm
TRS.U	(2 wires) cable 100 mm, M8 connector (use MC1 or MC2 connectors)	10 mm

Hall effect sensors, with led, DC, N.O. (Normally open)

		X=point of commutation
1581.HAP	PNP (3 wires) cable 2.5 mt.	7,5 mm
THS.P	PNP (3 wires) cable 100 mm, M8 connector (use MCH1 or MCH2 connectors)	7,5 mm

Diagrams and connections



* The load (LOAD) can be connected either to negative or positive pole

Technical characteristics	1581.U	TRS.U	1581.HAP	THS.P
Type of contact			N.O.	
Maximum current		50mA		
Maximum permanent power	8 VA - 1,5 W		1,5 W	
Voltage range	5 - 30V DC/AC		10 - 30 V DC	
Working temperature	-10°C - +70°C			
Maximum voltage drop	3,5 V		1 V	
Cable section (mm ²)	2 x 0,14 Ø2,8 mm PUR		3 x 0,14 Ø2,8 mm PUR	
Degree of protection	IP 67			

Cable ordering code

Connection 2 wires

Connector



Sensor



1 Brown (+)
4 Blue (-)
3 Not use

- MC1 cable 2 wires l=2.5m with M8 connector
- MC2 cable 2 wires l=5m with M8 connector
- MC3 cable 2 wires l=10m with M8 connector

Connection 3 wires

Connector



Sensor



1 Brown (+)
4 Black (signal)
3 Blue (-)

- MCH1 cable 3 wires l=2.5m with M8 connector
- MCH2 cable 3 wires l=5m with M8 connector
- MCH3 cable 3 wires l=10m with M8 connector



► **Sensor with cable**

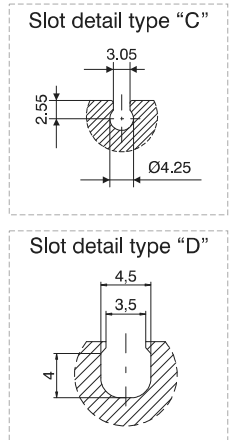
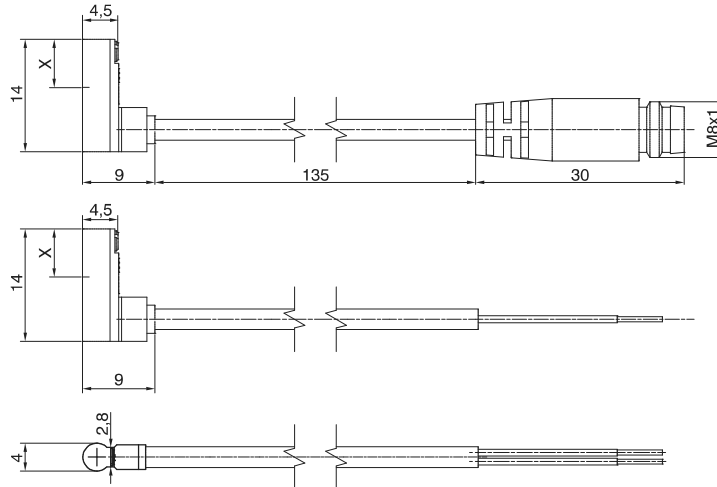


Weight g 22

Sensor with cable and M8 connector



Weight g 10



Ordering code

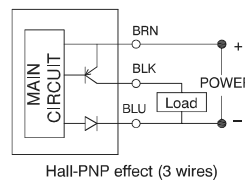
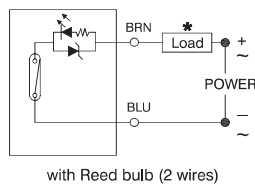
► **Ampulla Reed sensors, with led, DC, N.O. (Normally open)**

		X=point of commutation
1583.DC	(2 wires) cable 2 mt.	6 mm

► **Hall effect sensors, with led, N.O. (Normally open)**

		X=point of commutation
1583.HAP	PNP (3 wires) cable 3 mt.	6 mm
THR.P	PNP (3 wires) cable 100 mm, M8 connector (use MCH1 or MCH2 connectors)	6 mm

Diagrams and connections



* The load (LOAD) can be connected either to negative or positive pole

TECHNICAL CHARACTERISTICS	1583.DC	1583.HAP	THR.P
Type of contact	N.O.		
Maximum current	20mA	50mA	
Maximum permanent power	0,6 W	1,5 W	
Voltage range	10 - 28V DC	4,5 - 28 V DC	
Working temperature	-10°C - +70°C		
Maximum voltage drop	3,5 V	0,5 V	
Cable	Ø2,6 mm PVC - 2 m	Ø2,6 mm PVC - 3 m	
Degree of protection	IP 67		

Cable ordering code

- MCH1** cable 3 wires l=2.5m with M8 connector
- MCH2** cable 3 wires l=5m with M8 connector

Connection 3 wires

Connector



Sensor



- 1 Brown (+)
- 4 Black (signal)
- 3 Blue (-)