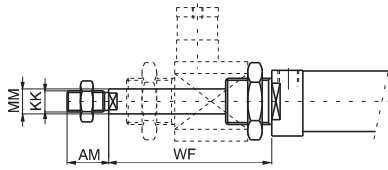




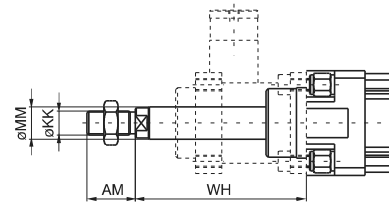
Microbore cylinders for piston rod lock

Threaded end covers version



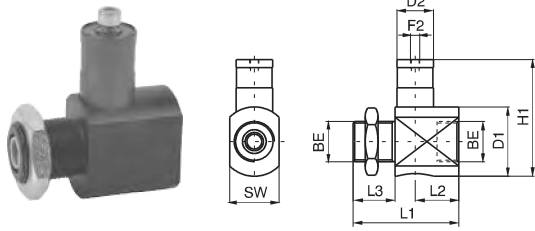
Ordering code	Order piston rod lock separately. Do not use with stainless steel or hexagonal piston rod.
12_ _Ø.stroke.B	

Cylinders for piston rod lock)

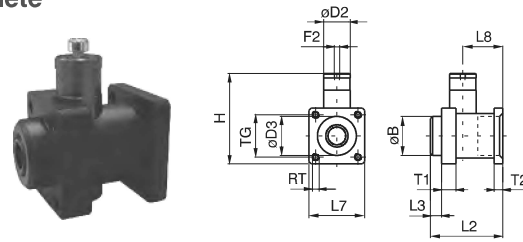


Ordering code	Order piston rod lock separately. Do not use with stainless steel piston rod.
13 --Ø.stroke.--B	

Piston rod lock complete



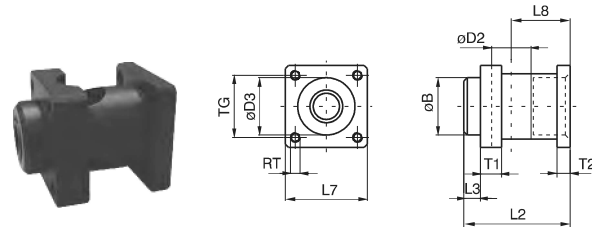
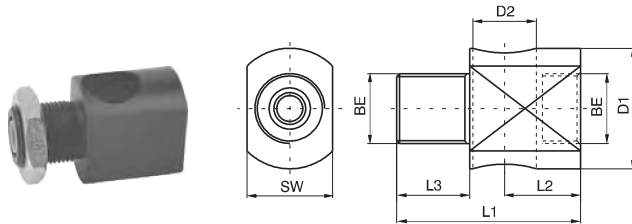
Do not use as safety device



Ordering code	Ø	12	16	20	25	32
1260.Ø.51BS	Weight g	82	82	140	140	188

Ordering code	Ø	32	40	50	63	80	100	125
1320.Ø.51BS	Weight g	191	276	535	852	1772	2412	5250

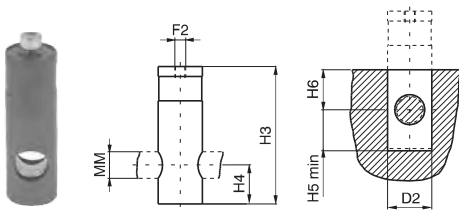
Piston rod lock bracket



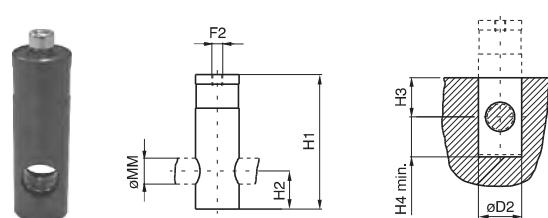
Ordering code	Ø	12	16	20	25	32
1260.Ø.51S	Weight g	60	60	85	85	133

Ordering code	Ø	32	40	50	63	80	100	125
1320.Ø.51S	Weight g	142	171	360	486	1060	1700	3500

Piston rod lock and housing



Do not use as safety device



Ordering code	Ø	12	16	20	25	32
1260.Ø.51B (Ø12÷Ø25)	Weight g	22	22	55	55	55
1320.32.51B (Ø32)						

Ordering code	Ø	32	40	50	63	80	100	125
1320.Ø.51B	Weight g	49	105	175	366	712	712	1750

Table of dimensions (series 1200)

Bore	AM	BE	D1	D2	F2	H1	H3	H4	H5	H6	KK	L1	L2	L3	MM	SW	WF
12	16	M16x1,5	20	16	M5	35	35	10	11	10	M6x1	42	21	12	6	20	55
16	16	M16x1,5	20	16	M5	35	35	10	11	10	M6x1	42	21	12	6	20	55
20	20	M22x1,5	38	20	M5	64	62	17,5	19	18	M8x1,25	58	24	23	8	27	73
25	22	M22x1,5	38	20	M5	64	62	17,5	19	18	M10x1,25	58	24	23	10	27	77
32	20	M30x1,5	39,5	20	M5	64	62	17,5	18,5	18	M10x1,25	60	26	22	12	35	76,5

Table of dimensions (series 1300)

Bore	AM	B	D2	D3	F2	H	H1	H2	H3	H4	KK	L2	L3	L7	L8	MM	RT	T1	T2	TG	WH
32	22	30	20	30,5	M5	67	62	17,5	18	18,5	M10x1,25	58	10	45	31,5	12	M6	13	8	32,5	74
40	24	35	24	35	G 1/8"	86	83	22	22	23	M12x1,25	65	10	50	36	16	M6	13	8	38	85
50	32	40	30	40	G 1/8"	105	100	25	25	26	M16x1,5	82	12	60	45,5	20	M8	16	15	46,5	107
63	32	45	38	45	G 1/8"	121	116	30	30	31	M16x1,5	82	12	70	49,5	20	M8	16	15	56,5	107
80	40	45	48	45	G 1/8"	164	155	36	36	37	M20x1,5	110	20	90	61	25	M10	20	18	72	126

Series 1260 - 1320 - Linear control units

Construction characteristics

Body	extruded shape anodized aluminium alloy 6060
Bushings	sintered bronze
Wiper	oil resitant NBR rubber
Rods	chromed C43 steel
Plate	plated zinc steel
Mounting block	plated zinc steel

Technical characteristics

Max. suggested strokes for 1200 series:

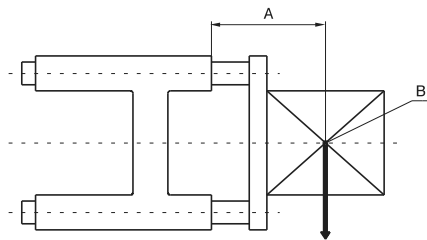
Diameter	20	25
Stroke mm	200	250

Max. suggested strokes for 1320 series:

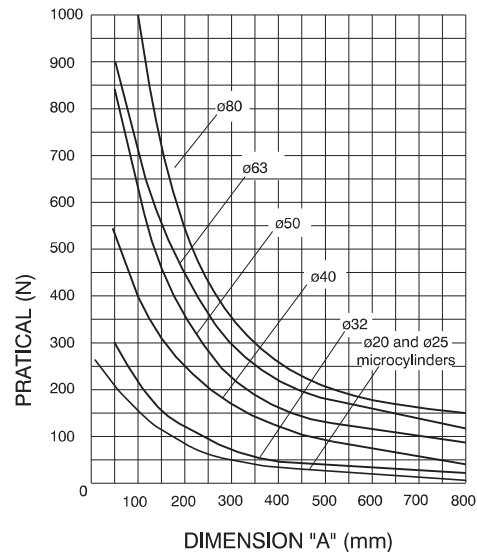
Diameter	32	40	50	63	80
Stroke mm	300	350	450	500	550

On request are available strokes up to 2800 mm

Loading diagram based on dimension "A"



A = Protusion
B = Load centre of gravity



Use and maintenance

Follow the indication of the above diagram as far as loads are concerned. A large quantity of grease is placed between the two wipers during assembly, therefore the linear control units should not require special maintenance.