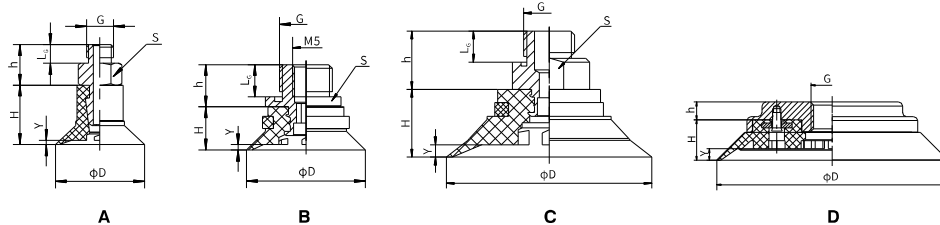




▶ Round flat suction cup



Code V=Version N=NBR / S=Silicone	Drawing	D	H	G	L <sub>g</sub>	h	S	Y
19VTP.V.05.015.00	A	16,5	11	M5	3,5	7,5	7	0,8
19VTP.V.18.020.00	B	22	8	G1/8"	6	7,8	13	1
19VTP.V.18.025.00	B	27	9	G1/8"	6	7,8	13	1
19VTP.V.18.030.00	B	32	10	G1/8"	6	7,8	13	1,2
19VTP.V.18.040.00	C	42	13	G1/8"	6	12	17	1,2
19VTP.V.14.050.00	C	53	17,5	G1/4"	9	17	24	3,2
19VTP.V.14.075.00	D	77	13	G1/4"	*	13	*	4
19VTP.V.12.110.00	D	112	20	G1/2"	*	9	*	6
19VTP.V.12.150.00	D	152	26	G1/2"	*	10	*	8



Round flat suction cup, suitable for gripping and moving with vacuum, objects with flat surfaces, offers good stability and minimal displacement. Recommended for applications with force parallel to grip plane, suitable for moving glass, wood, steel and plastic sheets. Internal reinforcements prevent thin objects from deforming and increase friction in applications with forces parallel to grip plane.

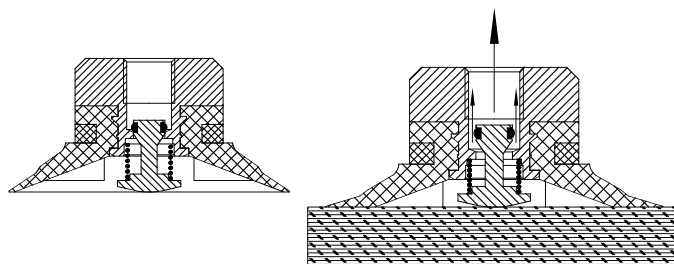
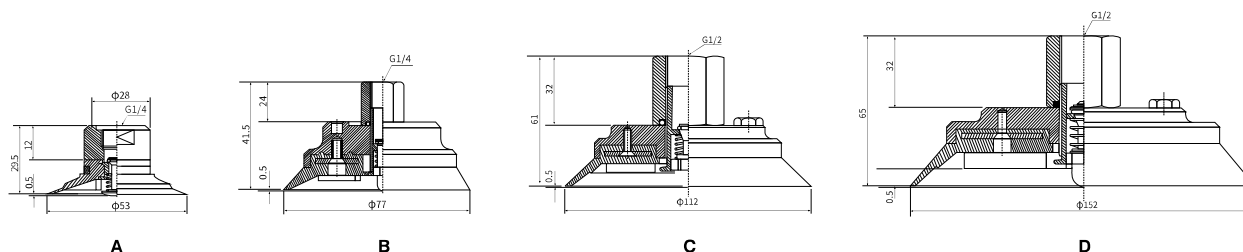
SUCTION CUPS

Table of lifting forces

Code V=Version N=NBR / S=Silicone	Volume cm <sup>3</sup>	Lifting force in vertical direction (N)			Lifting force in parallel direction (N)			Weight (gr.)
		-20kPa	-60kPa	-90kPa	-20kPa	-60kPa	-90kPa	
19VTP.V.18.020.00	1	6	15	18.7	5	7.95	8.45	3.1
19VTP.V.18.025.00	1.1	9.2	19.3	24.9	7.95	8.95	10	3.6
19VTP.V.18.030.00	2	13	24.8	30.8	11	15.98	20	4.5
19VTP.V.18.040.00	4.8	20	40	50	15	25	29.5	11.5
19VTP.V.14.050.00	10	37	74	96	24	40	50	27.9
19VTP.V.14.075.00	20	80	201	272	60	110	140	121.3
19VTP.V.12.110.00	70	141	418.5	562	140	248	299.7	245.3
19VTP.V.12.150.00	160	300	845	1098	250	600	800	605

Material	Color	Hardness °Shore A	Working temperature °C
NBR	Black	55	-20 ... 110
Silicone	Red	50	-40 ... 200

▶ Round flat suction cup with touch valve



Code V=Version N=NBR / S=Silicone	Drawing
19VTP.N.27.050.00	A
19VTP.N.27.075.00	B
19VTP.N.28.110.00	C
19VTP.N.28.150.00	D
19VTP.S.27.050.00	A
19VTP.S.27.075.00	B
19VTP.S.28.110.00	C

