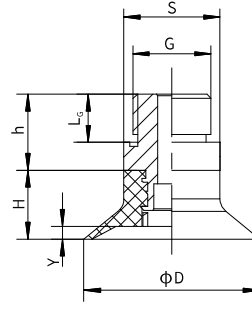


Standard round suction cup made of polyurethane



PACKAGING



LONG LIFETIME

Code	Drawing	D	H	G	h	L _c	Y	S
19VTN.P.18.030.00	A	31	10,5	G1/8	7,8	6	2	13
19VTN.P.18.040.00	A	41	14	G1/8	12	6	2,5	17

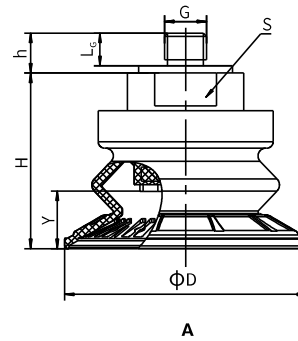
Standard round suction cup made of polyurethane, suitable for gripping and moving with vacuum, objects with flat or slightly curved surfaces, allows gripping on concave surfaces. The big advantage of this suction cup, is that the material it's made of, polyurethane, lasts longer than other materials, has optimum wear resistance, good flexibility and Polyurethane suction cups are mark resistant.

Table of lifting forces

Code	Volume cm ³	Lifting force in vertical direction (N)			Lifting force in parallel direction (N)			Weight (gr.)
		-20kPa	-60kPa	-90kPa	-20kPa	-60kPa	-90kPa	
19VTN.P.18.030.00	2	13	23	33	7.8	9.8	11	5
19VTN.P.18.040.00	5.5	20	40	60	13.8	22	27.5	11.8

Material	Color	Hardness °Shore A	Working temperature °C
PU	Yellow	40	10 ... 50

Round bellows suction cup made of polyurethane



METAL SHEET



SLIP RESISTANCE



LONG LIFETIME



OILY SURFACES

Code	Drawing	D	H	G	L _c	h	S	Y
19VTS.P.14.030.15	A	32	28	G1/4	12	13,5	17	7
19VTS.P.14.040.15	A	42	29	G1/4	12	13,5	17	9
19VTS.P.14.050.15	A	51,5	37	G1/4	12	13,5	22	12,5
19VTS.P.14.060.15	A	64	41,5	G1/4	12	13,5	22	15
19VTS.P.14.080.15	A	84	49,5	G1/4	12	13,5	22	23
19VTS.P.14.100.15	A	103	55	G1/4	12	13,5	22	22

Round bellows suction cup made of polyurethane, suitable for moving pieces of various sizes and shapes and where level compensation is necessary, such as when withdrawing from loaders. The big advantage of this suction cup, is that the material it's made of, polyurethane, lasts longer than other materials, has optimum wear resistance, good flexibility and optimum tensile strength. Suitable for moving--with vacuum--steel sheets, glass sheets, cardboard boxes and wood panels.

Table of lifting forces

Code	Volume cm ³	Lifting force in vertical direction (N)			Lifting force in parallel direction (N)			Weight (gr.)
		-20kPa	-60kPa	-90kPa	-20kPa	-60kPa	-90kPa	
19VTS.P.14.030.15	6	11	60.2	91	8.4	30.5	76	30
19VTS.P.14.040.15	7.2	17.5	93	119.8	11.3	63.8	110.8	30.6
19VTS.P.14.050.15	11	25	128.5	157.8	20.5	94	144	58.5
19VTS.P.14.060.15	22	87.3	156.2	189.2	67	125.6	165.8	67.9
19VTS.P.14.080.15	59.5	118.6	210.5	252.6	89	167.8	221.2	89.9
19VTS.P.14.100.15	103.5	149	269.5	310.4	111.8	209.8	276.5	135.3