

Pad valves Series PVA

Pad valves are one of the more functional and efficient solutions for intercepting fluids.



The valves are composed of a bronze body, 2 ways, with pneumatic control, with a compact single or double acting cylinder with connections which can be turned 360°. Versions are available that have the gaskets in contact with the fluid, and are made of NBR, FPM or PTFE.

The liner profile allows use of magnetic sensors with codes "1500._", "RS._", "HS._", for type "A" slot.

Construction characteristics

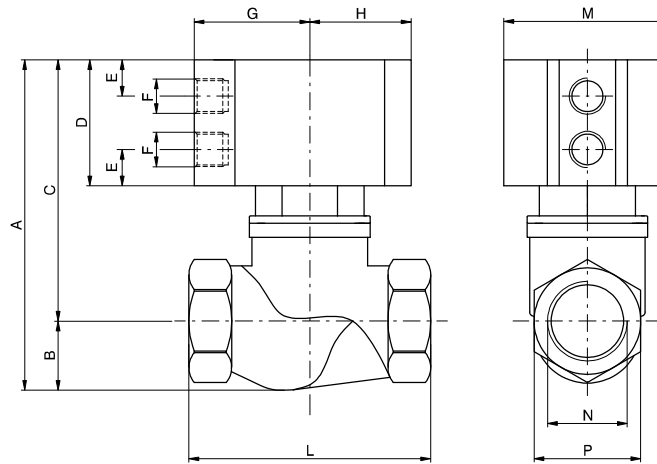
Rear eye, piston and rod bushing	Anodised aluminium
Cylinder	Aluminium alloy anodised
Spring	Zinc plated steel
Pneumatic cylinder seals	NBR (FPM for variants with seals in contact with fluid in FPM or PTFE)
Seals in contact with fluid	NBR, FPM, PTFE
Piston rod	Chromed stainless steel
Bushing, bushing pad, nut pad	Brass

Operational characteristics

Pneumatic cylinder fluid	Filtered and lubricated air or non
Valve fluid	Fluid compatible with seals compounds available
Actuator - Maximum working pressure	10
Pad Valve - Maximum working pressure	101,3
Temperature °C, Non magnetic piston, NBR seals	-5 / + 70
Non magnetic piston, FPM seals	-5 / + 150
Non magnetic piston, PTFE seals	-5 / + 150
Magnetic piston, NBR, FPM, PTFE seals	-5 / + 70

Series PVA

► “T” body version pad valve



Ordering code

PVA.B.A.P.T.C.M

	ACTING
A	DE=Double acting
	SC=Normally Closed
	SA=Normally Open
	PISTON
P	N=Non magnetic
	M= Magnetic
	CONNECTIONS
	A=G1/4"
	B=G3/8"
	C=G1/2"
C	D=G3/4"
	E=G1"
	F=G1 1/4"
	G=G1 1/2"
	H=G2"
	SEALS
M	N=NBR
	V=FPM
	F=PTFE

Table of dimensions

	Non magnetic version			Magnetic version												Technical data		
Connection (N)	A	C	D	A	C	D	B	E	F	G	H	L	M	P	Actuator (N)	Valve Ø	Weight (gr.)	
G1/4"	93,5	77,5	41	97,5	81,5	45	16	10,25	G1/8"	32,5	28,5	64	47	25	Ø40	Ø13,5	350	
G3/8"	93,5	77,5	41	97,5	81,5	45	16	10,25	G1/8"	32,5	28,5	64	47	25	Ø40	Ø13,5	350	
G1/2"	93,5	78	41	99,5	82	45	17,5	10,25	G1/8"	32,5	28,5	68	47	30	Ø40	Ø15	400	
G 3/4"	105	83	41	113	90	48	22	11,25	G1/8"	44	40	79	70	36	Ø63	Ø20,5	850	
G1"	117	89	41	125	101	53	28	11,25	G1/8"	44	40	94	70	44	Ø63	Ø25	1100	
G1 1/4"	131	103	48	136	108	53	28	11,25	G1/8"	44	40	110	70	55	Ø63	Ø30	1400	
G1 1/2"	154	118	57	166	130	69	36	13,75	G1/8"	56	49	120	90	60	Ø80	Ø38	2100	
G2"	169	124	57	181	136	69	45	13,75	G1/8"	56	49	140	90	73	Ø80	Ø49,5	3000	

Pad valves 2-ways, are a reliable and economic solution to control fluid, Pneumatically actuated by a compact double or single acting cylinder with 360° revolving connections. Standard seals in contact with are made in NBR, FPM or PTFE. The barrel profile allows the use of Pneumax magnetic sensors series 1500.

Construction characteristics		
<ul style="list-style-type: none"> - Rear eye, piston and rod bushing = anodised aluminium - Cylinder = aluminium alloy anodised - Spring = zinc plated steel - Seals = NBR, FPM, PTFE - Piston rod = chromed stainless steel - Bushing, bushing pad, nut pad = Brass 	Fluid	Filtered and lubricated air or non
	Maximum working pressure (-kPa)	101
	Minimum working pressure single action (cylinder)	5 bar
	Minimum working pressure double action (cylinder)	5 bar
	Temperature °C (Non magnetic piston, NBR seals)	-5 / + 70
	Temperature °C (Non magnetic piston, FPM seals)	-5 / + 150
	Temperature °C (Non magnetic piston, PTFE seals)	-5 / + 150
	Temperature °C (Magnetic piston, NBR, FPM, PTFE seals)	-5 / + 70