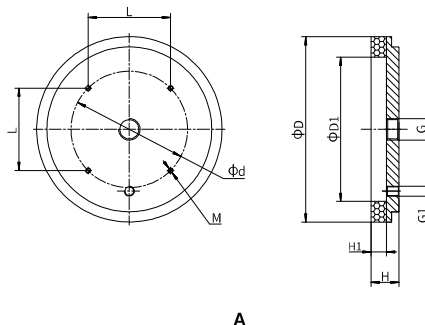


## Foam rubber round suction cup




A

STONE &  
MARBLEROUGH  
SURFACE

Foam rubber round suction cup is made from a special mixture called "NR", which has a density that allows for gripping even on very rough and irregular surfaces, and allows its elasticity to be maintained even after several working cycles. Especially suited for moving loads with coarse or very rough surfaces such as: sawn, bush-hammered or flamed marble, textured, non-slip or ribbed/corrugated sheets, brick, items made of rough concrete, garden walkway tiles, etc., and in general in all cases where traditional suction cups cannot be used. Recommended for handling loads with lifting force parallel to the surface and for the movement of loads with oiled surfaces.

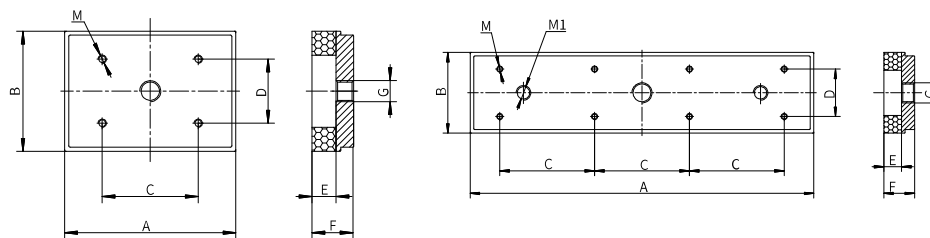
SUCTION CUPS

Table of lifting forces

Code	Lifting force in vertical direction (N) 	Weight (gr.)
	-60kPa	
19VTN.G.14.040.00	7.8	33.4
19VTN.G.14.064.00	35	82.4
19VTN.G.38.092.00	85	197.8
19VTN.G.12.127.00	175	489.3

Material	Color	Hardness °Shore A	Working temperature °C
Foam rubber "NR"	Orange	30	-20 ... 80

## Foam rubber rectangular suction cup




A

B

STONE &  
MARBLEROUGH  
SURFACE

Foam rubber rectangular suction cup is made from a special mixture called "NR", which has a density that allows for gripping even on very rough and irregular surfaces, and allows its elasticity to be maintained even after several working cycles. Especially suited for movement of loads with coarse or very rough surfaces such as: sawn, bush-hammered or flamed marble, textured, non-slip or ribbed/corrugated sheets, brick, items made of rough concrete, garden walkway tiles, etc. and in general in all cases where traditional suction cups cannot be used. Not recommended for handling loads with lifting force parallel to the surface or for the movement of loads with oiled surfaces.

Table of lifting forces

Code	Lifting force in vertical direction (N) 	Weight (gr.)
	-60kPa	
19VRN.14.FxR.00	80	231,7
19VRN.14.HxN.00	90	236,7
19VRN.12.RxS.00	706	1175,1

Material	Color	Hardness °Shore A	Working temperature °C
Foam rubber "NR"	Orange	30	-20 ... 80