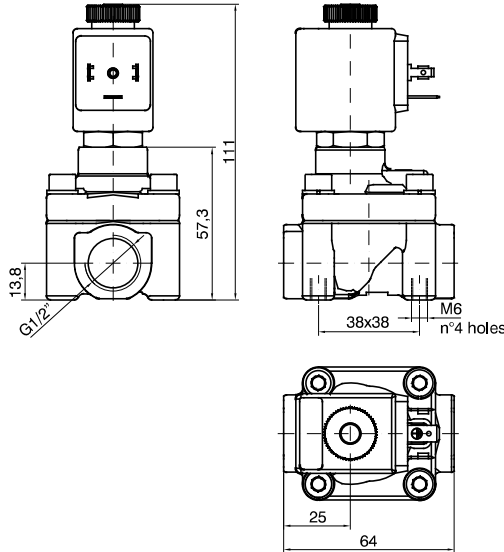


F3224 - 2-way solenoid valve N.O. brass body and cover, with G connection (ISO 228) - 1/2"

PNEUMAX FLUID CONTROL

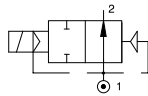


CODE "W" = PTFE seals	G connection (ISO 228) ⊕ = Connection D	Orifice (mm)	KV (m³/h)	Differential pressure (bar)			Power consumption			⊕ = Solenoid coil		Temperature range (°C)
				Min	Max		AC Inrush (VA)	AC Holding (VA)	DC (W)	Series	Size	
					AC	DC						
F3224⊕W12⊕	1/2"	12	60	3	50	50	20	15	10	MG	30	-10 ... +95

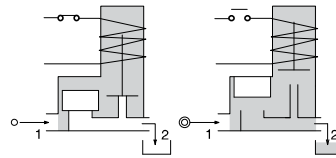
Example: F3224⊕W12⊕ => F3224DW12MG5:

2-way solenoid valve normally open, servo-assisted piston with G connection (ISO 228) 1/2", main seals in PTFE other in FPM, 12 mm orifice, solenoid coil 24 VDC (MG5, size 30 for more information, please refer to the section "Solenoid coils - Series F300").

Pneumatic symbol



Diagram



Construction characteristics	Technical characteristics	
<ul style="list-style-type: none"> - Brass body and cover - AISI 303 stainless steel guide tube - AISI 430FR stainless steel mobile and fixed core - AISI 302 stainless steel springs - PBT piston - Sealing assemblies mainly PTFE, others FPM OPTIONS (on request): <ul style="list-style-type: none"> - Chemical nickel plating - certified solenoid coils 	Maximum admitted pressure (bar)	100
	Maximum fluid viscosity (mm²/s)	12cSt
	Minimum differential pressure (bar)	3
	Maximum admitted leakage (Nl/h)	<0,2
	Ambient temperature: with class F solenoid coil (°C)	-10 ... +55
Mounting position	Preferably with solenoid coil upwards	