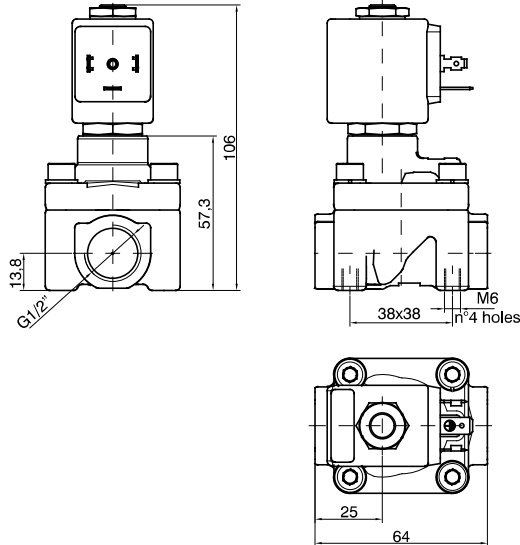




F3124 - 2-way solenoid valve N.C. brass body and cover, with G connection (ISO 228) - 1/2"

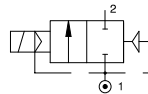


CODE "W" = PTFE seals	G connection (ISO 228)	Orifice (mm)	KV (m ³ /h)	Differential pressure (bar)			Power consumption			⊕ = Solenoid coil		Temperature range (°C)
	⊕ = Connection			Min	Max		AC Inrush (VA)	AC Holding (VA)	DC (W)	Series	Size	
	D				AC	DC						
F3124⊕W12⊕	1/2"	12	60	3	100	100	20	15	10	MG	30	-10 ... +95

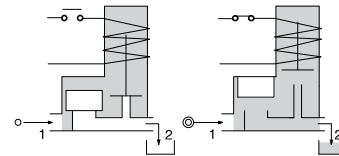
Example: F3124⊕W12⊕ => F3124DW12MG5:

2-way solenoid valve normally closed, servo-assisted piston with G connection (ISO 228) 1/2", main seals in PTFE other in FPM, 12 mm orifice, solenoid coil 24 VDC (MG5, size 30 for more information, please refer to the section "Solenoid coils - Series F300").

Pneumatic symbol



Diagram



Construction characteristics	Technical characteristics	
- Brass body and cover - AISI 303 stainless steel guide tube - AISI 430FR stainless steel mobile and fixed core - AISI 302 stainless steel springs - PBT piston - Sealing assemblies mainly PTFE, others FPM OPTIONS (on request): - Chemical nickel plating - certified solenoid coils	Maximum admitted pressure (bar)	150
	Maximum fluid viscosity (mm ² /s)	12cSt
	Minimum differential pressure (bar)	3
	Maximum admitted leakage (Nl/h)	<0,2
	Ambient temperature: with class F solenoid coil (°C)	-10 ... +55
	Mounting position	Preferably with solenoid coil upwards