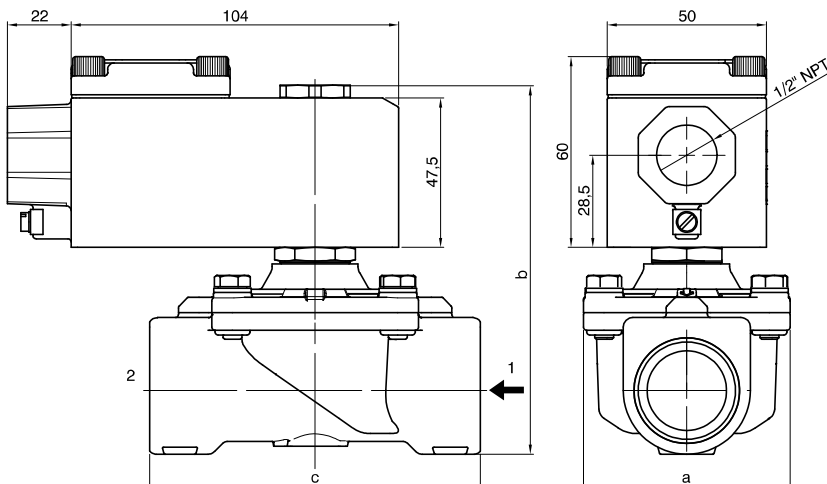




**FX3178 - 2-way solenoid valve N.C. stainless steel body, with G connection (ISO 228)  
with certified housing: Ex d IIC T6 or T5 or T4 Gb - 3/8" ... 1"**



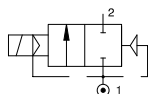
CODE "V" = FPM seals	G connection (ISO 228) ⊕ = Connection				Orifice (mm)	KV (m³/h)	Differential pressure (bar)			Power consumption (W)	⊕ = Solenoid coil	Temperature range (°C)
	C	D	E	F			Min	Max				
								AC	DC			
FX3178CV15B	3/8"	/	/	/	15	2,4	0	6	6	8	A6B= 24 Volt (AC 50-60 Hz) A6E= 220/230 Volt (AC 50-60 Hz) A60= 12 Volt (DC) A61= 24 Volt (DC)	-10 ... +80
FX3178CV16B	/	1/2"	/	/	16	3	6	6				
FX3178CV20B	/	/	3/4"	/	20	3,6	6	6				
FX3178CV25B	/	/	/	1"	25	8,4	3	3				

G connection	3/8"	1/2"	3/4"	1"
a	52	52	58	65
b	98	98	106	115
c	68	68	75	90

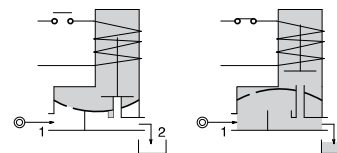
Example: FX3178CV15B => FX3178CV15A60:

2-way solenoid valve normally closed, with assisted-lift diaphragm with certified housing: Ex d IIC T6 or T5 or T4 Gb, with G connection (ISO 228) 3/8", FPM seals, 15 mm orifice, solenoid coil 12 VDC (A60).

**Pneumatic symbol**



**Diagram**



**Construction characteristics**

- AISI 316 stainless steel body
- Red light alloy housing
- 1/2" NPT electrical connection (M20x1,5 on request)
- FPM sealing assemblies

**OPTIONS (on request):**

- Solenoid coil with stainless steel housing

**Technical characteristics**

Maximum admitted pressure (bar)	16
Minimum differential pressure (bar)	0
Maximum fluid viscosity (mm²/s)	25cSt
Ambient temperature (°C)	-40 ... +60
Mounting position	Vertical with solenoid coil upwards