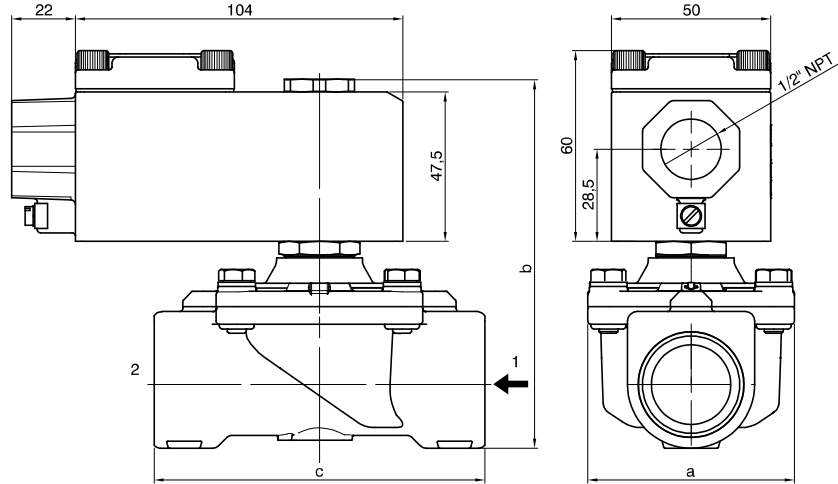




**FX3168 - 2-way solenoid valve N.C. brass body, with G connection (ISO 228)
with certified housing: Ex d IIC T6 or T5 or T4 Gb - 3/8" ... 1"**



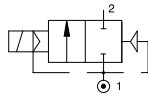
CODE "V" = FPM seals	G connection (ISO 228) ⊕ = Connection				Orifice (mm)	KV (m³/h)	Differential pressure (bar)			Power consumption (W)	⊕ = Solenoid coil	Temperature range (°C)
	C	D	E	F			Min	Max				
FX3168CV11⊕	3/8"		/		11	1,2	0	AC	DC	8	A6B= 24 Volt (AC 50-60 Hz) A6E= 220/230 Volt (AC 50-60 Hz) A60= 12 Volt (DC) A61= 24 Volt (DC)	-10 ... +80
FX3168CV16⊕	/	1/2"	/		16	2,4		5	5			
FX3168CV16⊕	/	/	3/4"	/	16	2,4		5	5			
FX3168CV20H⊕	/	/	3/4"	/	20	7,2		5	5			
FX3168CV25H⊕	/	/	1"		25	8,4		5	5			

G connection	3/8"	1/2"	3/4"	3/4" (H)	1" (H)
a	50	50	50	65	65
b	95	106	106	109	116
c	56	70	70	104	104

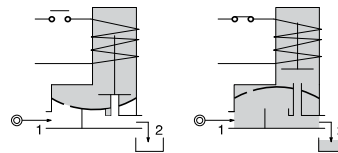
Example: FX3168CV11⊕ => FX3168CV11A60:

2-way solenoid valve normally closed, with assisted-lift diaphragm with certified housing: Ex d IIC T6 or T5 or T4 Gb, with G connection (ISO 228) 3/8", FPM seals, 11 mm orifice, solenoid coil 12 VDC (A60).

Pneumatic symbol



Diagram



Construction characteristics

- Brass body
- Red light alloy housing
- 1/2" NPT electrical connection (M20x1,5 on request)
- FPM sealing assemblies

Technical characteristics

Maximum admitted pressure (bar)	16
Minimum differential pressure (bar)	0
Maximum fluid viscosity (mm²/s)	25cSt
Ambient temperature (°C)	-40 ... +60
Mounting position	Vertical with solenoid coil upwards