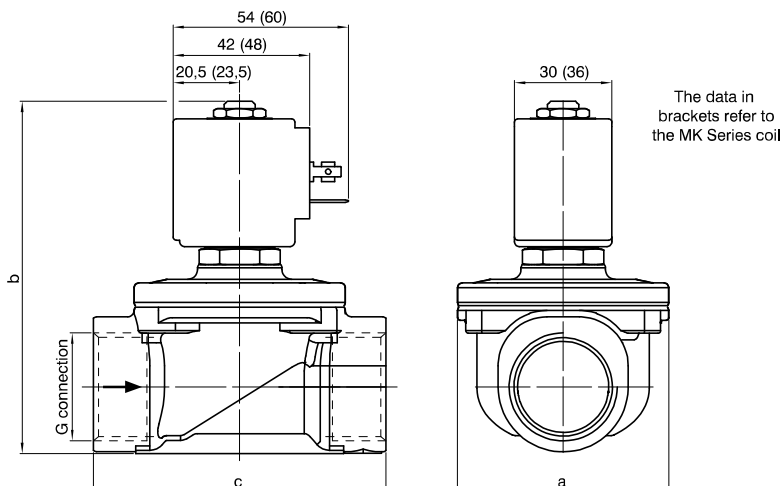




F3178 - 2-way solenoid valve N.C. stainless steel body and cover, with G connection (ISO 228) - 3/8" ... 1" 1/2



CODE "V" = FPM seals	G connection (ISO 228) ⊕ = Connection						Orifice (mm)	KV (m ³ /h)	Differential pressure (bar)			Power consumption (W)	⊕ = Solenoid coil		Temperature range (°C)
	C	D	E	F	G	H			Min	Max			Series	Size	
										AC	DC				
F3178⊕V15⊕	3/8"			/			15	2,4	0	14	6	10	MG	30	-10 ... +140
F3178⊕V16⊕	/	1/2"		/			16	3		/	14	27	MK	36	
F3178⊕V20⊕	/		3/4"	/			20	3,6		14	6	10	MG	30	
										/	14	27	MK	36	
F3178⊕V25⊕	/			1"	/		25	8,4		14	6	10	MG	30	
										/	14	27	MK	36	
F3178⊕V35⊕	/			1" 1/4	/		35	18		8	/	10	MG	30	
										14	2	14	MK	36	
										/	7	27	MK	36	
F3178⊕V40⊕	/			1" 1/2	/		40	19,2		8	/	10	MG	30	
										14	2	14	MK	36	
										/	7	27	MK	36	

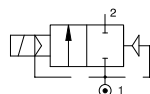
G connection	3/8"	1/2"	3/4"	1"	1" 1/4	1" 1/2
a	52	52	58	65	94	94
b	92	92	100	109	126	126
c	68	68	75	90	128	128

N.B. For use with steam maximum admitted pressure PS is 2,5 bar (relative pressure).

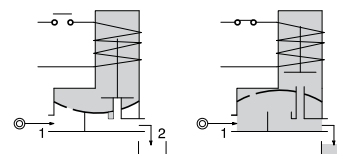
Example: F3178⊕V15⊕ => F3178CV15MG5:

2-way solenoid valve normally closed, with assisted-lift diaphragm with G connection (ISO 228) 3/8", FPM seals, 15 mm orifice, solenoid coil 24 VDC (MG5, size 30 for more information, please refer to the section "Solenoid coils - Series F300").

Pneumatic symbol



Diagram



Construction characteristics

- AISI 316 stainless steel body and cover
- AISI 316 stainless steel guide tube
- AISI 430FR stainless steel mobile and fixed core
- AISI 302 stainless steel springs
- Silver advance ring
- FPM sealing assemblies (NBR on request)

OPTIONS (on request):

- NPT connections
- ATEX Ex d explosion protection solenoid coil
- For use with oxygen
- certified solenoid coils

Technical characteristics

Maximum admitted pressure (bar)	16
Maximum fluid viscosity (mm ² /s)	25cSt
Ambient temperature: with class F solenoid coil (°C)	-10 ... +55
Ambient temperature: with class H solenoid coil (°C)	-10 ... +80

Mounting position

Preferably with solenoid coil upwards