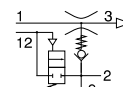
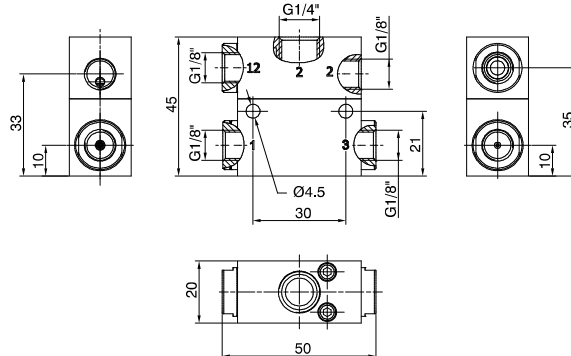


### Single stage vacuum generator with built in vacuum retaining valve



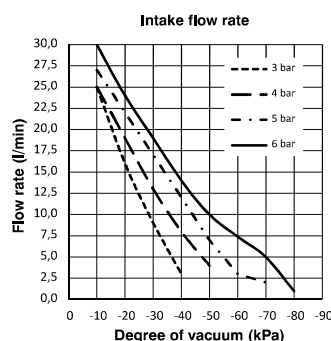
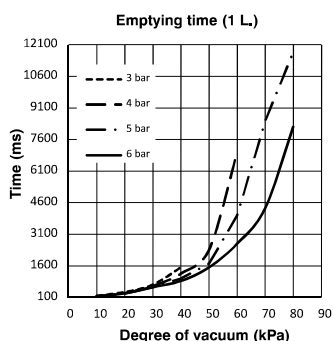
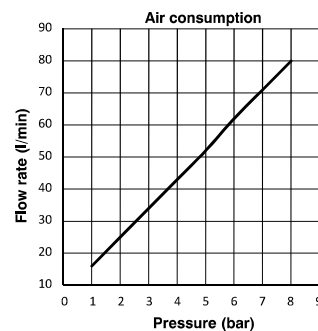
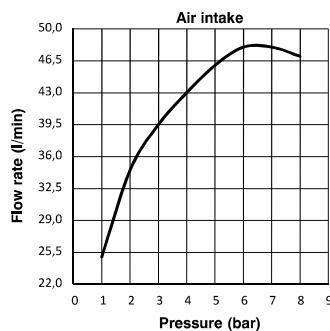
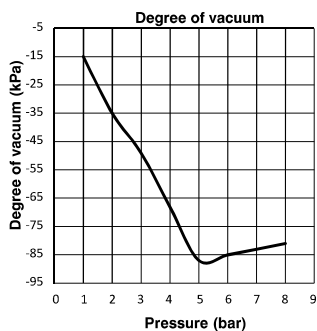
Ordering code

**19M14.S.10.SS.03**

Single stage generators, robust and reliable, with compact dimensions and suitable for applications which require the vacuum to be reached quickly with limited air flow. Operating on the Venturi principle they have the vacuum connection orthogonal to the axis of supply and outlet. They can be connected directly to the suction cups or suction cup holder for the construction of a decentralized plant. Equipped with an integrated non-return valve, which holds the vacuum in sealed applications and breakdowns or lack of air supply and a flap valve for the quick release of the manipulated objects.

## Operational characteristics

Operational characteristics			
- Inlet pressure (bar)	2	4	6
- Degree of Vacuum (-kPa)	35	68	85
- Intake flow rate (l/min)	35	43	48
- Air consumption (l/min)	25	43	62



### Technical characteristics

Fluid	Unlubricated filtered air
Pressure (bar)	1 ... 8
Temperature (°C)	-10 ... +80
Weight (gr.)	85

## Accessories

19S18.S	Silencer G1/8"
---------	----------------