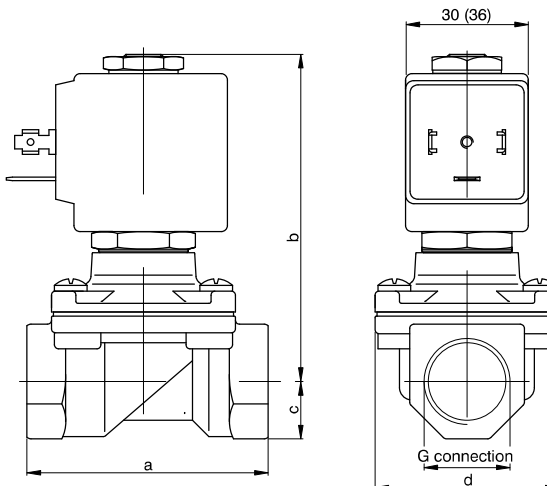




F3108 - 2-way solenoid valve N.C. brass body and cover, with G connection (ISO 228) - 3/8" ... 1"



CODE "V" = FPM seals	G connection (ISO 228) ⊕ = Connection				Orifice (mm)	KV (m³/h)	Differential pressure (bar)			Power consumption			⊕ = Solenoid coil		Temperature range (°C)
	C	D	E	F			Min	Max		AC Inrush (VA)	AC Holding (VA)	DC (W)	Series	Size	
F3108⊕V12⊕	3/8"	/	/	/	12	2		0	10						/
F3108⊕V12⊕	/	1/2"	/	/	12	2,2	10		/						
F3108⊕V12⊕	3/8"	/	/	/	12	2	12		10	40	30	27	MK (AC/DC)	36	
F3108⊕V12⊕	/	1/2"	/	/	12	2,2	12		10						
F3108⊕V18⊕	/	/	3/4"	/	18	4,5	9		/	40	30	/	MK (AC/DC)	36	
F3108⊕V25⊕	/	/	/	1"	25	8,5	7		/						
F3108⊕V18C⊕	/	/	3/4"	/	18	4,5	/		9	/	/	27	MK/DC	36	
F3108⊕V25C⊕	/	/	/	1"	25	8,5	/		8						

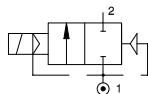
G connection		3/8"	1/2"	3/4"	1"
a		59	59	79	96
b		83	83	90	101
c		14	14	18	20
d		45	45	55	72
Weight (g)	MG	520	490	/	/
	MK	600	570	810	1220

N.B. For use with steam maximum admitted pressure PS is 2,5 bar (relative pressure).

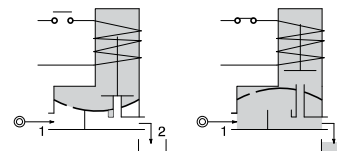
Example: F3108⊕V12⊕ => F3108CV12MG5:

2-way solenoid valve normally closed, with assisted-lift diaphragm with G connection (ISO 228) 3/8", FPM seals, 12 mm orifice, solenoid coil 24 VDC (MG5, size 30 for more information, please refer to the section "Solenoid coils - Series F300").

Pneumatic symbol



Diagram



Construction characteristics	Technical characteristics	
- Brass body and cover - AISI 303 stainless steel guide tube - AISI 430FR stainless steel mobile and fixed core - AISI 302 stainless steel springs - FPM sealing assemblies OPTIONS (on request): - Chemical nickel plating - TÜV certified solenoid coils	Maximum admitted pressure(bar)	25
	Maximum fluid viscosity (mm²/s)	25cSt
	Ambient temperature: with class F solenoid coil (°C)	-10 ... +55
	Ambient temperature: with class H solenoid coil (°C)	-10 ... +80
Mounting position	Preferably with solenoid coil upwards	