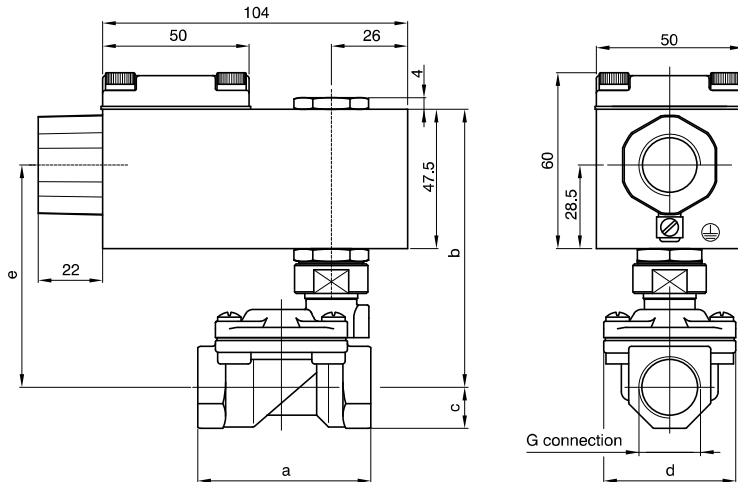




**FX3107 - 2-way solenoid valve N.C. brass body and cover, with G connection (ISO 228)
with certified housing: Ex d IIC T6 or T5 or T4 Gb - 1/4" ... 3"**



PNEUMAX FLUID CONTROL

CODE "V"= FPM seals "B"= NBR seals	G connection (ISO 228) Θ = Connection											Orifice (mm)	KV (m ³ /h)	Differential pressure (bar)				Power consumption		Θ = Solenoid coil	Temperature range (°C)
	B	C	D	E	F	G	H	I	M	R	Min			Max		AC Holding (VA)	DC (W)				
	AC		DC																		
FX3107CV10B	1/4"					/						10	1,5	0,15	15	15	12	8	A6B= 24 Volt (AC 50-60 Hz) A6E= 220/230 Volt (AC 50-60 Hz) A60= 12 Volt (DC) A61= 24 Volt (DC)	-10 ... +80	
FX3107CV10B	/	3/8"				/					10	1,7	15		15						
FX3107CV12B	/	3/8"				/					12	2,2	15		15						
FX3107CV12B	/		1/2"			/					12	2,5	15		15						
FX3107CV18B	/			3/4"		/					18	5,5	13		13						
FX3107CV25B	/				1"	/					25	10,2	10		10						
FX3107CV30B	/					1" 1/4	/				30	15	10		10						
FX3107CV37B	/					1" 1/4	/				37	18	10		10						
FX3107CV37B	/						1" 1/2	/			37	21	10		10						
FX3107CV50B	/							2"	/		50	36	10		10						
FX3107CB75B	/								2" 1/2	/	75	75	0,3	5	5						
FX3107CB75B	/									3"	75	84		5	5						

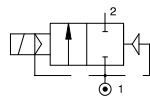
G connection	1/4" Ø10	3/8" Ø10	3/8" Ø12	1/2" Ø12	3/4"	1"	1" 1/4 Ø30	1" 1/4	1" 1/2	2"	2" 1/2	3"
a	49	49	59	59	79	96	119	142	142	158	226	226
b	90	90	95	95	101	110	118	110	110	119	138	138
c	11	11	14	14	18	20	25	28	28	35	51	51
d	32	32	45	45	54	72	85	102	102	119	169	169
e	71	71	76	76	82	91	99	91	91	100	119	119
Weight (g)	720	720	920	920	1100	1500	2270	3330	3120	4720	10400	10000

N.B. The solenoid valve is suited for intercepting only fluids that are NOT potentially explosive.

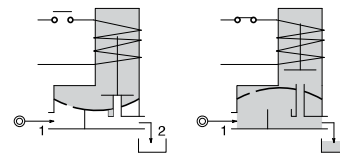
Example: FX3107CV10B => FX3107BV10A60:

2-way solenoid valve normally closed, servo-assisted diaphragm with certified housing: Ex d IIC T6 or T5 or T4 Gb, with G connection (ISO 228) 1/4", FPM seals, 10 mm orifice, solenoid coil 12 VDC (A60).

Pneumatic symbol



Diagram



Construction characteristics	Technical characteristics	
- Brass body and cover - Red light alloy housing - 1/2" NPT electrical connection (M20x1,5 on request) - FPM sealing assemblies (NBR only for "M" and "R" versions)	Maximum admitted pressure (bar)	25
OPTIONS (on request): - Chemical nickel plating surface treatment - Version with slowed commutation	Minimum differential pressure (bar)	0,15 ... 0,3
	Maximum fluid viscosity (mm ² /s)	25cSt
	Ambient temperature (°C)	-40 ... +60
	Mounting position	Vertical with solenoid coil upwards