

CD - CDD series

CD series

It is a multipole connector series for crimped connections made with removable crimp contacts **CD** series.

There are 5 different sizes available (6 polarities):

- "21.21" with two inserts, respectively **CD 07** (7 P + ⊕) and **CD 08** (8 P) for SELV applications;

NOTE – These two polarities are coded to avoid their incorrect cross-mating. **CD 07**, being equipped with a pass-through PE connection that does not serve as equipotential bonding of a metal enclosure, is suitably safety-coded to avoid mismatch with a metal enclosure of this size.

- "49.16" with **CD 15** (15 P + ⊕) provided by 3 rows of 5 contact seats each;
- "66.16" with **CD 25** (25 P + ⊕) provided by 2 outer rows of 9 contact seats each and 1 inner row with 7 contact seats;
- "77.27" with **CD 40** (40 P + ⊕) provided by 4 rows of 10 contact seats each;
- "104.27" with **CD 64** (64 P + ⊕) provided by 4 rows of 16 contact seats each.

It is also possible to mount **two inserts side-by-side in a connector enclosure** is also given:

- for inserts size "66.16" (**CD 25 + CD 25 Z**) to get a **50 P + ⊕** connector with connector enclosures size "66.40";
- for inserts size "77.27" (**CD 40 + CD 40**) to get an **80 P + ⊕** connector with connector enclosures size "77.62";
- for inserts size "104.27" (**CD 64 + CD 64**) to get a **128 P + ⊕** connector with connector enclosures size "104.62".

The last four sizes of the first list are described in **EN 175 301-801:2006** European standard, which derives from the old German standard **DIN 43 652**, whose first edition dates back to the Seventies of last century. This standard provides dimensional standardization for these four sizes of connector inserts as well as for **CD series crimp contacts**, solid, machined, used by these connectors, and of the main types (and sizes) of relevant **connector enclosures**, including interface dimensions between the connector inserts and the relevant connector hood or housing, overall dimensions of locking levers and pegs, etc. This standard provides ground for the dimensional standardization of the other connector sizes (e.g. "44.27", "57.27") for all series of connector inserts with the same size and for all connector enclosure series with these sizes.

As for any series of connector inserts for crimped connections, the polarity is to be intended as "up to", being always possible to fit a connector insert with a reduced number of crimped connections, suiting the specific application. In this regard, see e.g. next page for use of **CD** series connector inserts at special (higher) voltages.

These connectors cover applications for rated voltage up to **250V AC/DC in pollution degree 3** (industrial environment) when connectors are fully equipped with contacts, and for rated currents up to **10A** per pole (derating diagram show actual current carrying capacity as a function of number of poles, conductor size and ambient temperature).

The PE connection for size "21.21" **CD 07** is a pass-through (crimp) connection that does not provide equipotential bonding to earth to a possible metal connector enclosure, hence the safety coding implemented in inserts **CDM 07** and **CDF 07** to avoid mismatch with metal enclosures.

The PE connection for the other sizes is provided by a screw terminal on the side of pole #1, and by lateral mating contacts. The PE terminal of the inserts provide earthing to the metal enclosures.

CDD series

It is the high density evolution of **CD** series. It provides choice of **5 different sizes** (5 polarities) of multipole connector inserts for crimped connections made with removable crimp contacts **CDD** series:

- "44.27" with **CDD 24** (24 P + ⊕) provided by 6 rows of 4 contact seats each;
- "66.16" with **CDD 38** (38 P + ⊕) provided by 2 outer rows of 10 contact seats each and 2 inner rows with 9 contact seats each;
- "57.27" with **CDD 42** (42 P + ⊕) provided by 6 rows of 7 contact seats each;
- "77.27" with **CDD 72** (72 P + ⊕) provided by 6 rows of 12 contact seats each;
- "104.27" with **CDD 108** (108 P + ⊕) provided by 6 rows of 18 contact seats each.

It is also possible to mount two inserts side-by-side in a connector enclosure is also provided:

- for inserts size "66.16" (**CDD 38 + CDD 38**) to get a **76 P + ⊕** connector with connector enclosures size "66.40";
- for inserts size "77.27" (**CDD 72 + CDD 72**) to get a **144 P + ⊕** connector with connector enclosures size "77.62";
- for inserts size "104.27" (**CDD 108 + CDD 108**) to get a **216 P + ⊕** connector with connector enclosures size "104.62".

These connectors cover applications for rated voltage up to **250 VAC/DC in pollution degree 2** (suitable for industrial environment once used inside enclosures >IP54) when connectors are fully equipped with contacts, and for rated currents up to 10A per pole (derating diagram show actual current carrying capacity as a function of number of poles, conductor size and ambient temperature).

The PE connection for all sizes is provided by a screw terminal on the side of pole #1, and lateral mating contacts. The PE terminal of the inserts provide earthing to the metal enclosures.

Even when the coding function is not required, **it is highly recommended to use CRM and CRF coding pins** (see pages 685, 686 in this catalogue) **with CD and CDD connector inserts**, to reduce movements when mating and unmating the connectors, to avoid contact damage. To this aim, standard EN 175 301-801:2006 specifies a max allowed angular longitudinal fluctuation of $\pm 5^\circ$.

Special voltages for CD series

If all the contacts are used, CD connector inserts may be used with voltage up to 250V (first column) pollution degree 3 in accordance with standard EN 61984.

If the number of contacts is reduced and the contacts assigned accordingly, these connectors may be used at higher voltages. This is possible because the decrease in the number of contacts leads

to an increase in clearances (insulating distances in air) and creepage distances (insulating distances along the surface).

When the contacts are arranged as shown below, the inserts may be used at rated voltage of 500V (second column) pollution degree 3 in accordance with standard EN 61984.

CD

For use up to 250V pollution degree 3	For use up to 500V pollution degree 3
diagrams contacts side (front view)	diagrams contacts side (front view)
CD 07 - 7 + ⊕ F M 	CD 07 - 3 + ⊕ F M
CD 15 - 15 + ⊕ F M 	CD 15 - 7 + ⊕ F M
CD 25 - 25 + ⊕ F M 	CD 25 - 11 + ⊕ F M
CD 40 - 40 + ⊕ F M 	CD 40 - 20 + ⊕ F M
CD 64 - 64 + ⊕ F M 	CD 64 - 32 + ⊕ F M
Legend: ● working contact ○ without contact M = male insert F = female insert	

CD 7 poles + ⊕ 10A - 250V

enclosures:
size "21.21"

page:

Insulating type

339 - 348

inserts, crimp connections



10A crimp contacts silver and gold plated



description	part No.	part No.	part No.	part No.
without contacts (to be ordered separately)				
female inserts for female contacts, grey and black ¹⁾	grey CDF 07	black CDF 07 N		
male inserts for male contacts, grey and black	CDM 07	CDM 07 N		
10A female contacts				
0,14-0,37 mm ² AWG 26-22 identification No. 1			CDF A 0.3	CDFD 0.3
0,5 mm ² AWG 20 identification No. 2			CDF A 0.5	CDFD 0.5
0,75 mm ² AWG 18 identification No. ②			CDF A 0.7	CDFD 0.7
1 mm ² AWG 18 identification No. 3			CDF A 1.0	CDFD 1.0
1,5 mm ² AWG 16 identification No. 4			CDF A 1.5	CDFD 1.5
2,5 mm ² AWG 14 identification No. 5			CDF A 2.5	CDFD 2.5
10A male contacts				
0,14-0,37 mm ² AWG 26-22 identification No. 1			CDMA 0.3	CDMD 0.3
0,5 mm ² AWG 20 identification No. 2			CDMA 0.5	CDMD 0.5
0,75 mm ² AWG 18 identification No. ②			CDMA 0.7	CDMD 0.7
1 mm ² AWG 18 identification No. 3			CDMA 1.0	CDMD 1.0
1,5 mm ² AWG 16 identification No. 4			CDMA 1.5	CDMD 1.5
2,5 mm ² AWG 14 identification No. 5			CDMA 2.5	CDMD 2.5

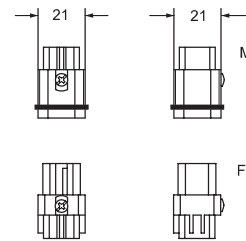
1) the female inserts can be mounted into the straight bulkhead housings CK I from the rear

- characteristics according to EN 61984:

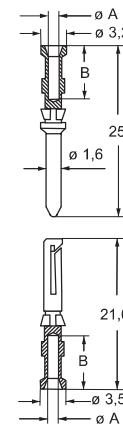
10A 250V 4kV 3
10A 230/400V 4kV 2

- us (UL for USA and Canada), certified

- rated voltage according to UL/CSA: 600V
- insulation resistance: ≥ 10 GΩ
- ambient temperature limit: -40 °C ... +125 °C
- made of self-extinguishing thermoplastic resin UL 94V-0
- mechanical life: ≥ 500 cycles
- contact resistance: ≤ 3 mΩ
- for applications requiring higher voltages, please see the special voltage application section on page 65
- **it is recommended to crimp the contacts with crimping tools homologated by ILME** (please see the crimping tool section 10A contacts, CDF and CDM series on pages 708 - 741)
- for max. current load see the connector inserts derating diagram below; for more information see page 28



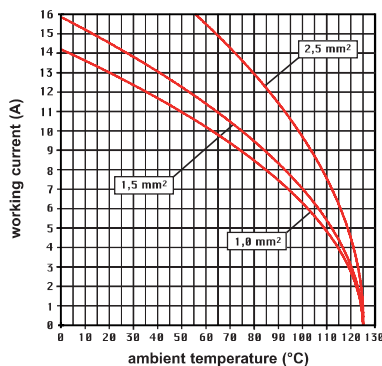
contacts side (front view)



CDF and CDM contacts

conductor section mm ²	conductor slot ø A (mm)	conductors stripping length B (mm)
0,14-0,37	0,9	8
0,5	1,1	8
0,75	1,3	8
1,0	1,45	8
1,5	1,8	8
2,5	2,2	6

CD 07 poles connector inserts
Maximum current load derating diagram



CR CP coding pin
with loss of one contact
(page 689)



⊕ for basic or high thickness gold plating, please refer to page 674

CD 8 poles 10A - 50V ac / 120V dc

enclosures: size "21.21"	page:
Insulating type	339 - 348
Metallic type	349 - 363
W-TYPE for aggressive environments	512 - 518
E-Xtreme® corrosion proof	538 - 539
EMC	564 - 572
IP68	628 - 631

inserts, crimp connections



10A crimp contacts
silver and gold plated



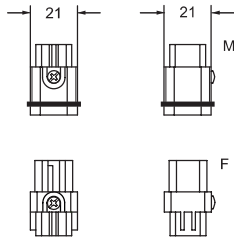
description	part No.	part No.	part No.
without contacts (to be ordered separately)			
female inserts for female contacts ¹⁾	CDF 08		
male inserts for male contacts	CDM 08		
10A female contacts			
0,14-0,37 mm ² AWG 26-22 identification No. 1		C DFA 0.3	C DFD 0.3
0,5 mm ² AWG 20 identification No. 2		C DFA 0.5	C DFD 0.5
0,75 mm ² AWG 18 identification No. ②		C DFA 0.7	C DFD 0.7
1 mm ² AWG 18 identification No. 3		C DFA 1.0	C DFD 1.0
1,5 mm ² AWG 16 identification No. 4		C DFA 1.5	C DFD 1.5
2,5 mm ² AWG 14 identification No. 5		C DFA 2.5	C DFD 2.5
10A male contacts			
0,14-0,37 mm ² AWG 26-22 identification No. 1		C DMA 0.3	C DMD 0.3
0,5 mm ² AWG 20 identification No. 2		C DMA 0.5	C DMD 0.5
0,75 mm ² AWG 18 identification No. ②		C DMA 0.7	C DMD 0.7
1 mm ² AWG 18 identification No. 3		C DMA 1.0	C DMD 1.0
1,5 mm ² AWG 16 identification No. 4		C DMA 1.5	C DMD 1.5
2,5 mm ² AWG 14 identification No. 5		C DMA 2.5	C DMD 2.5

1) the female inserts can be mounted into the straight bulkhead housings CK I from the rear

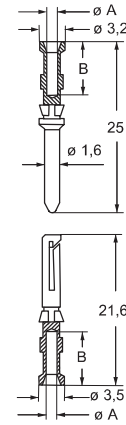
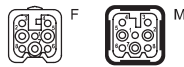
- characteristics according to EN 61984:

10A 50V ac / 120V dc 0,8kV 3

- rated voltage according to UL/CSA: 50V ac / 120V dc
- insulation resistance: ≥ 10 GΩ
- ambient temperature limit: -40 °C ... +125 °C
- made of self-extinguishing thermoplastic resin UL 94V-0
- mechanical life: ≥ 500 cycles
- contact resistance: ≤ 3 mΩ
- for applications requiring higher voltages, please see the special voltage application section on page 65
- **it is recommended to crimp the contacts with crimping tools homologated by ILME** (please see the crimping tool section 10A contacts, CDF and CDM series on pages 708 - 741)
- for max. current load see the connector inserts derating diagram below; for more information see page 28



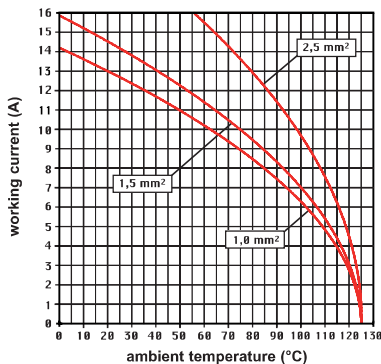
contacts side (front view)



CDF and CDM contacts

conductor section mm ²	conductor slot diameter A (mm)	conductors stripping length B (mm)
0,14-0,37	0,9	8
0,5	1,1	8
0,75	1,3	8
1,0	1,45	8
1,5	1,8	8
2,5	2,2	6

CD 08 poles connector inserts
Maximum current load derating diagram



CR CP coding pin with loss of one contact (page 689)



⁺ for basic or high thickness gold plating, please refer to page 674

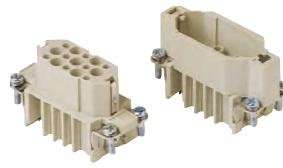
CD 15 poles + ⊕ 10A - 250V

enclosures:
size "49.16" page:

IL-BRID 374 - 377, 382
 CZ7 IP67, single lever 384
 W-TYPE for aggressive environments 519
 E-Xtreme® corrosion proof 540
 EMC 576

panel supports: page:
 COB + adaptor 652 - 654

inserts, crimp connections



10A crimp contacts silver and gold plated



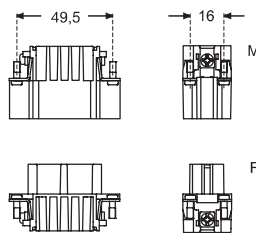
description	part No.	part No.	part No.
without contacts (to be ordered separately)			
female inserts for female contacts	CDF 15		
male inserts for male contacts	CDM 15		
10A female contacts			
0,14-0,37 mm ² AWG 26-22 identification No. 1		C DFA 0.3	C DFD 0.3
0,5 mm ² AWG 20 identification No. 2		C DFA 0.5	C DFD 0.5
0,75 mm ² AWG 18 identification No. ②		C DFA 0.7	C DFD 0.7
1 mm ² AWG 18 identification No. 3		C DFA 1.0	C DFD 1.0
1,5 mm ² AWG 16 identification No. 4		C DFA 1.5	C DFD 1.5
2,5 mm ² AWG 14 identification No. 5		C DFA 2.5	C DFD 2.5
10A male contacts			
0,14-0,37 mm ² AWG 26-22 identification No. 1		C DMA 0.3	C DMD 0.3
0,5 mm ² AWG 20 identification No. 2		C DMA 0.5	C DMD 0.5
0,75 mm ² AWG 18 identification No. ②		C DMA 0.7	C DMD 0.7
1 mm ² AWG 18 identification No. 3		C DMA 1.0	C DMD 1.0
1,5 mm ² AWG 16 identification No. 4		C DMA 1.5	C DMD 1.5
2,5 mm ² AWG 14 identification No. 5		C DMA 2.5	C DMD 2.5

- characteristics according to EN 61984:

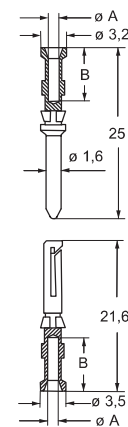
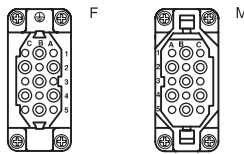
10A 250V 4kV 3
10A 230/400V 4kV 2

- us (UL for USA and Canada), certified

- rated voltage according to UL/CSA: 600V
- insulation resistance: ≥ 10 GΩ
- ambient temperature limit: -40 °C ... +125 °C
- made of self-extinguishing thermoplastic resin UL 94V-0
- mechanical life: ≥ 500 cycles
- contact resistance: ≤ 3 mΩ
- for applications requiring higher voltages, please see the special voltage application section on page 65
- **it is recommended to crimp the contacts with crimping tools homologated by ILME** (please see the crimping tool section 10A contacts, CDF and CDM series on pages 708 - 741)
- for max. current load see the connector inserts derating diagram below; for more information see page 28



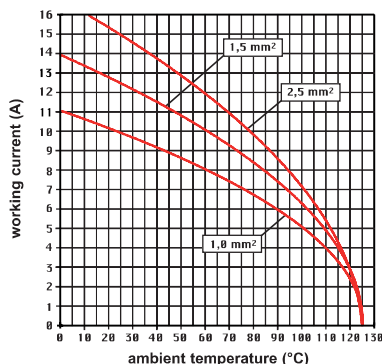
contacts side (front view)



CDF and CDM contacts

conductor section mm ²	conductor slot ø A (mm)	conductors stripping length B (mm)
0,14-0,37	0,9	8
0,5	1,1	8
0,75	1,3	8
1,0	1,45	8
1,5	1,8	8
2,5	2,2	6

CD 15 poles connector inserts
 Maximum current load derating diagram



CR CP coding pin with loss of one contact (page 689)

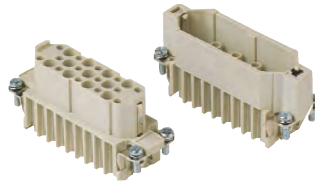


† for basic or high thickness gold plating, please refer to page 674

CD 25 poles + ⊕ 10A - 250V

enclosures: size "66.16"	page:
IL-BRID	378 - 382
CZ7 IP67, single lever	385
W-TYPE for aggressive environments	520
E-Xtreme® corrosion proof	541
EMC	577
panel supports: COB + adaptor	page: 652 - 654

inserts, crimp connections

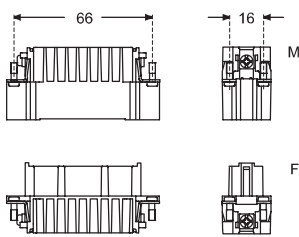


10A crimp contacts
silver and gold plated

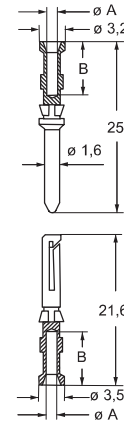
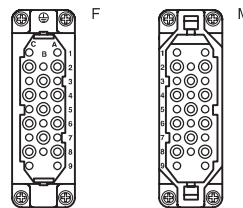


description	part No.	part No.	part No.
without contacts (to be ordered separately)			
female inserts for female contacts	CDF 25		
male inserts for male contacts	CDM 25		
10A female contacts			
0,14-0,37 mm ² AWG 26-22 identification No. 1		CDF A 0.3	CDFD 0.3
0,5 mm ² AWG 20 identification No. 2		CDF A 0.5	CDFD 0.5
0,75 mm ² AWG 18 identification No. ②		CDF A 0.7	CDFD 0.7
1 mm ² AWG 18 identification No. 3		CDF A 1.0	CDFD 1.0
1,5 mm ² AWG 16 identification No. 4		CDF A 1.5	CDFD 1.5
2,5 mm ² AWG 14 identification No. 5		CDF A 2.5	CDFD 2.5
10A male contacts			
0,14-0,37 mm ² AWG 26-22 identification No. 1		CDMA 0.3	CDMD 0.3
0,5 mm ² AWG 20 identification No. 2		CDMA 0.5	CDMD 0.5
0,75 mm ² AWG 18 identification No. ②		CDMA 0.7	CDMD 0.7
1 mm ² AWG 18 identification No. 3		CDMA 1.0	CDMD 1.0
1,5 mm ² AWG 16 identification No. 4		CDMA 1.5	CDMD 1.5
2,5 mm ² AWG 14 identification No. 5		CDMA 2.5	CDMD 2.5

- characteristics according to EN 61984:
10A 250V 4kV 3
10A 230/400V 4kV 2
- cULus (UL for USA and Canada), certified
- rated voltage according to UL/CSA: 600V
- insulation resistance: ≥ 10 GΩ
- ambient temperature limit: -40 °C ... +125 °C
- made of self-extinguishing thermoplastic resin UL 94V-0
- mechanical life: ≥ 500 cycles
- contact resistance: ≤ 3 mΩ
- for applications requiring higher voltages, please see the special voltage application section on page 65
- **it is recommended to crimp the contacts with crimping tools homologated by ILME** (please see the crimping tool section 10A contacts, CDF and CDM series on pages 708 - 741)
- for max. current load see the connector inserts derating diagram below; for more information see page 28



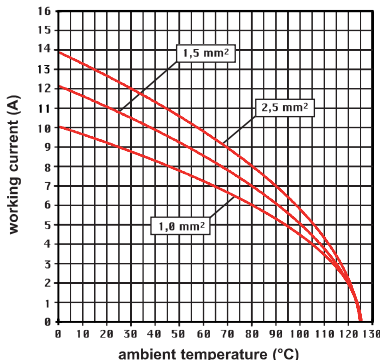
contacts side (front view)



CDF and CDM contacts

conductor section mm ²	conductor slot ø A (mm)	conductors stripping length B (mm)
0,14-0,37	0,9	8
0,5	1,1	8
0,75	1,3	8
1,0	1,45	8
1,5	1,8	8
2,5	2,2	6

CD 25 poles connector inserts
Maximum current load derating diagram



CR CP coding pin
with loss of one contact
(page 689)

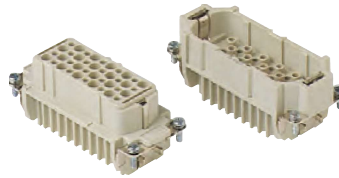


‡ for basic or high thickness gold plating, please refer to page 674

CD 40 poles + ⊕ 10A - 250V

enclosures: size "77.27"	page:
C-TYPE IP65 or IP66/IP69	402 - 411
C7 IP67, two levers	439 - 440
V-TYPE IP65 or IP66/IP69, single lever	454 - 458
BIG hoods	470 - 471
T-TYPE IP65 insulating	484 - 485
T-TYPE / W IP66/IP69 insulating	491
HYGIENIC T-TYPE / H IP66/IP69	503
HYGIENIC T-TYPE / C IP66/IP69, -50 °C	508
W-TYPE for aggressive environments	523
E-Xtreme® corrosion proof	534 - 535, 544, 554 - 555
EMC	580
Central lever	609 - 611
LS-TYPE	622 - 623
IP68	640 - 643
panel supports:	page:
COB	652 - 653

inserts, crimp connections



10A crimp contacts silver and gold plated



description	part No.	part No.	part No.
-------------	----------	----------	----------

without contacts (to be ordered separately)
female inserts for female contacts
male inserts for male contacts

CDF 40
CDM 40

10A female contacts

0,14-0,37 mm ²	AWG 26-22	identification No. 1
0,5 mm ²	AWG 20	identification No. 2
0,75 mm ²	AWG 18	identification No. ②
1 mm ²	AWG 18	identification No. 3
1,5 mm ²	AWG 16	identification No. 4
2,5 mm ²	AWG 14	identification No. 5

C DFA 0.3	silver plated	C DFD 0.3	gold plated+
C DFA 0.5		C DFD 0.5	
C DFA 0.7		C DFD 0.7	
C DFA 1.0		C DFD 1.0	
C DFA 1.5		C DFD 1.5	
C DFA 2.5		C DFD 2.5	

10A male contacts

0,14-0,37 mm ²	AWG 26-22	identification No. 1
0,5 mm ²	AWG 20	identification No. 2
0,75 mm ²	AWG 18	identification No. ②
1 mm ²	AWG 18	identification No. 3
1,5 mm ²	AWG 16	identification No. 4
2,5 mm ²	AWG 14	identification No. 5

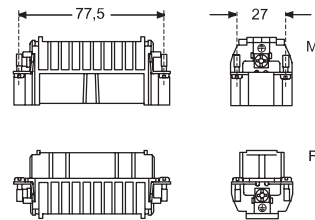
C DMA 0.3	silver plated	C DMD 0.3	gold plated+
C DMA 0.5		C DMD 0.5	
C DMA 0.7		C DMD 0.7	
C DMA 1.0		C DMD 1.0	
C DMA 1.5		C DMD 1.5	
C DMA 2.5		C DMD 2.5	

- characteristics according to EN 61984:

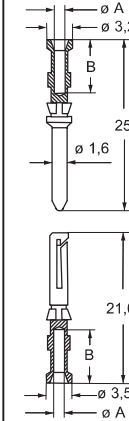
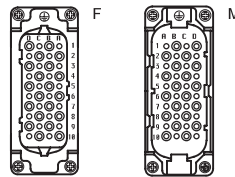
10A 250V 4kV 3
10A 230/400V 4kV 2

- us (UL for USA and Canada), certified

- rated voltage according to UL/CSA: 600V
- insulation resistance: ≥ 10 GΩ
- ambient temperature limit: -40 °C ... +125 °C
- made of self-extinguishing thermoplastic resin UL 94V-0
- mechanical life: ≥ 500 cycles
- contact resistance: ≤ 3 mΩ
- for applications requiring higher voltages, please see the special voltage application section on page 65
- **it is recommended to crimp the contacts with crimping tools homologated by ILME** (please see the crimping tool section 10A contacts, CDF and CDM series on pages 708 - 741)
- for max. current load see the connector inserts derating diagram below; for more information see page 28



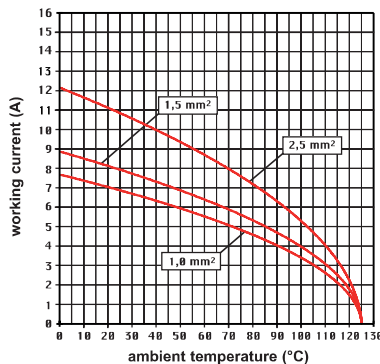
contacts side (front view)



CDF and CDM contacts

conductor section mm ²	conductor slot ø A (mm)	conductors stripping length B (mm)
0,14-0,37	0,9	8
0,5	1,1	8
0,75	1,3	8
1,0	1,45	8
1,5	1,8	8
2,5	2,2	6

CD 40 poles connector inserts
Maximum current load derating diagram



CR CP coding pin with loss of one contact (page 689)



† for basic or high thickness gold plating, please refer to page 674

CD 50 poles + ⊕ 10A - 250V

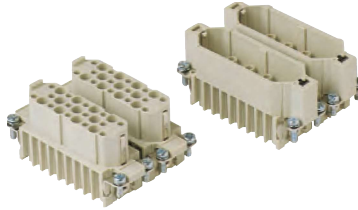
enclosures:
size "66.40"

page:

C-TYPE IP65 or IP66/IP69
W-TYPE for aggressive environments
E-Xtreme® corrosion proof

431 - 434
527
548

inserts, crimp connections



10A crimp contacts silver and gold plated



description	part No.	part No.	part No.	part No.
without contacts (to be ordered separately) female inserts, No. (A1+C9) and (ZA1+ZC9) * male inserts, No. (A1+C9) and (ZA1+ZC9) *	CDF 25 CDM 25	CDF 25 Z CDM 25 Z		
10A female contacts				
0,14-0,37 mm ² AWG 26-22 identification No. 1			CDFA 0.3	CDFD 0.3
0,5 mm ² AWG 20 identification No. 2			CDFA 0.5	CDFD 0.5
0,75 mm ² AWG 18 identification No. ②			CDFA 0.7	CDFD 0.7
1 mm ² AWG 18 identification No. 3			CDFA 1.0	CDFD 1.0
1,5 mm ² AWG 16 identification No. 4			CDFA 1.5	CDFD 1.5
2,5 mm ² AWG 14 identification No. 5			CDFA 2.5	CDFD 2.5
10A male contacts				
0,14-0,37 mm ² AWG 26-22 identification No. 1			CDMA 0.3	CDMD 0.3
0,5 mm ² AWG 20 identification No. 2			CDMA 0.5	CDMD 0.5
0,75 mm ² AWG 18 identification No. ②			CDMA 0.7	CDMD 0.7
1 mm ² AWG 18 identification No. 3			CDMA 1.0	CDMD 1.0
1,5 mm ² AWG 16 identification No. 4			CDMA 1.5	CDMD 1.5
2,5 mm ² AWG 14 identification No. 5			CDMA 2.5	CDMD 2.5

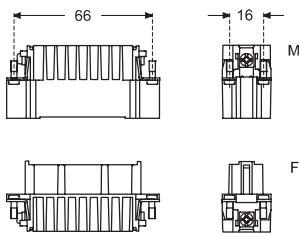
* coding compliant with EUROMAP recommendations

- characteristics according to EN 61984:

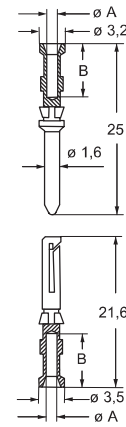
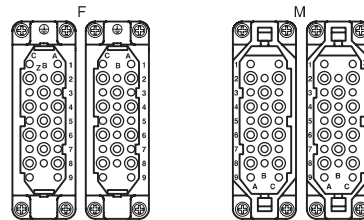
10A 250V 4kV 3
10A 230/400V 4kV 2

- us (UL for USA and Canada),
 certified

- rated voltage according to UL/CSA: 600V
- insulation resistance: $\geq 10 \text{ G}\Omega$
- ambient temperature limit: $-40 \text{ }^\circ\text{C} \dots +125 \text{ }^\circ\text{C}$
- made of self-extinguishing thermoplastic resin UL 94V-0
- mechanical life: ≥ 500 cycles
- contact resistance: $\leq 3 \text{ m}\Omega$
- for applications requiring higher voltages, please see the special voltage application section on page 65
- **it is recommended to crimp the contacts with crimping tools homologated by ILME** (please see the crimping tool section 10A contacts, CDF and CDM series on pages 708 - 741)
- for max. current load see the connector inserts derating diagram below; for more information see page 28



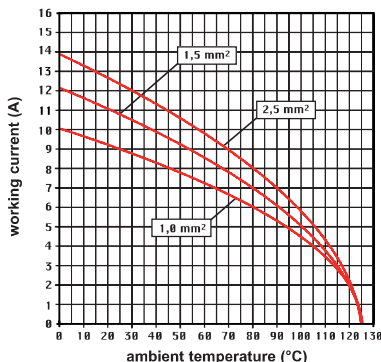
contacts side (front view)



CDF and CDM contacts

conductor section	conductor slot	conductors stripping length
mm ²	ø A (mm)	B (mm)
0,14-0,37	0,9	8
0,5	1,1	8
0,75	1,3	8
1,0	1,45	8
1,5	1,8	8
2,5	2,2	6

CD 50 poles connector inserts
Maximum current load derating diagram



CR CP coding pin
with loss of one contact
(page 689)



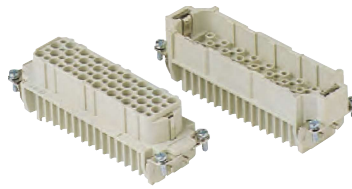
‡ for basic or high thickness gold plating, please refer to page 674

CD 64 poles + ⊕ 10A - 250V

enclosures: size "104.27"	page:
C-TYPE IP65 or IP66/IP69	412 - 423
C7 IP67, two levers	441 - 442
V-TYPE IP65 or IP66/IP69, single lever	459 - 463
BIG hoods	472 - 473
T-TYPE IP65 insulating	486 - 487
T-TYPE / W IP66/IP69 insulating	492
HYGIENIC T-TYPE / H IP66/IP69	504
HYGIENIC T-TYPE / C IP66/IP69, -50 °C	509
W-TYPE for aggressive environments	524
E-Xtreme® corrosion proof	536 - 537, 545, 556 - 557
EMC	581
Central lever	612 - 614
LS-TYPE	624 - 625
IP68	644 - 647

panel supports: COB	page: 652 - 653
------------------------	--------------------

inserts, crimp connections



10A crimp contacts silver and gold plated



description	part No.	part No.	part No.
-------------	----------	----------	----------

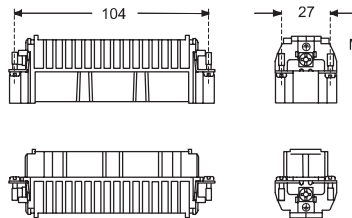
without contacts (to be ordered separately)
female inserts for female contacts
male inserts for male contacts

CDF 64
CDM 64

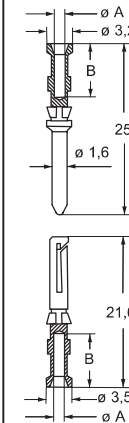
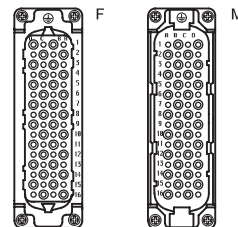
10A female contacts		
0,14-0,37 mm ²	AWG 26-22	identification No. 1
0,5 mm ²	AWG 20	identification No. 2
0,75 mm ²	AWG 18	identification No. ②
1 mm ²	AWG 18	identification No. 3
1,5 mm ²	AWG 16	identification No. 4
2,5 mm ²	AWG 14	identification No. 5
10A male contacts		
0,14-0,37 mm ²	AWG 26-22	identification No. 1
0,5 mm ²	AWG 20	identification No. 2
0,75 mm ²	AWG 18	identification No. ②
1 mm ²	AWG 18	identification No. 3
1,5 mm ²	AWG 16	identification No. 4
2,5 mm ²	AWG 14	identification No. 5

CDF A 0.3	silver plated	CDF D 0.3	gold plated+
CDF A 0.5		CDF D 0.5	
CDF A 0.7		CDF D 0.7	
CDF A 1.0		CDF D 1.0	
CDF A 1.5		CDF D 1.5	
CDF A 2.5		CDF D 2.5	
CDMA 0.3	gold plated+	CDMD 0.3	gold plated+
CDMA 0.5		CDMD 0.5	
CDMA 0.7		CDMD 0.7	
CDMA 1.0		CDMD 1.0	
CDMA 1.5		CDMD 1.5	
CDMA 2.5		CDMD 2.5	

- characteristics according to EN 61984:
10A 250V 4kV 3
10A 230/400V 4kV 2
- certified
- rated voltage according to UL/CSA: 600V
- insulation resistance: ≥ 10 GΩ
- ambient temperature limit: -40 °C ... +125 °C
- made of self-extinguishing thermoplastic resin UL 94V-0
- mechanical life: ≥ 500 cycles
- contact resistance: ≤ 3 mΩ
- for applications requiring higher voltages, please see the special voltage application section on page 65
- **it is recommended to crimp the contacts with crimping tools homologated by ILME** (please see the crimping tool section 10A contacts, CDF and CDM series on pages 708 - 741)
- for max. current load see the connector inserts derating diagram below; for more information see page 28



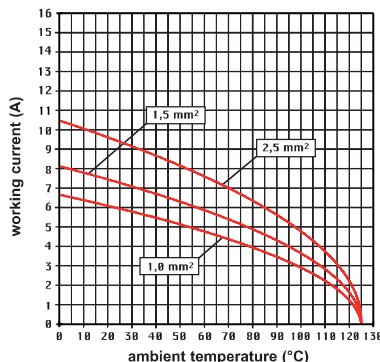
contacts side (front view)



CDF and CDM contacts

conductor section mm ²	conductor slot ø A (mm)	conductors stripping length B (mm)
0,14-0,37	0,9	8
0,5	1,1	8
0,75	1,3	8
1,0	1,45	8
1,5	1,8	8
2,5	2,2	6

CD 64 poles connector inserts
Maximum current load derating diagram



CR CP coding pin
with loss of one contact
(page 689)



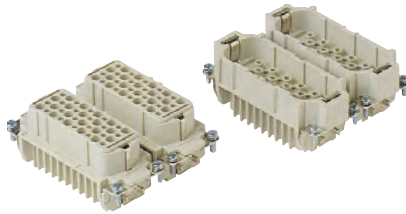
† for basic or high thickness gold plating, please refer to page 674

CD 80 poles + ⊕ 10A - 250V

enclosures:
size "77.62" page:

C-TYPE IP65 or IP66/IP69 424 - 429
W-TYPE for aggressive environments 525
E-Xtreme® corrosion proof 546

inserts, crimp connections

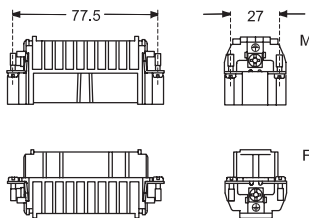


10A crimp contacts silver and gold plated

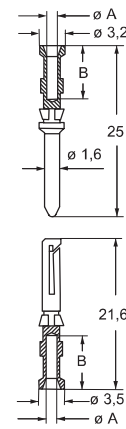
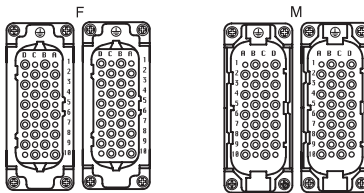


description	part No.	part No.	part No.	part No.
without contacts (to be ordered separately)				
female inserts	CDF 40	CDF 40		
male inserts	CDM 40	CDM 40		
10A female contacts				
0,14-0,37 mm ² AWG 26-22 identification No. 1			CDFA 0.3	CDFD 0.3
0,5 mm ² AWG 20 identification No. 2			CDFA 0.5	CDFD 0.5
0,75 mm ² AWG 18 identification No. ②			CDFA 0.7	CDFD 0.7
1 mm ² AWG 18 identification No. 3			CDFA 1.0	CDFD 1.0
1,5 mm ² AWG 16 identification No. 4			CDFA 1.5	CDFD 1.5
2,5 mm ² AWG 14 identification No. 5			CDFA 2.5	CDFD 2.5
10A male contacts				
0,14-0,37 mm ² AWG 26-22 identification No. 1			CDMA 0.3	CDMD 0.3
0,5 mm ² AWG 20 identification No. 2			CDMA 0.5	CDMD 0.5
0,75 mm ² AWG 18 identification No. ②			CDMA 0.7	CDMD 0.7
1 mm ² AWG 18 identification No. 3			CDMA 1.0	CDMD 1.0
1,5 mm ² AWG 16 identification No. 4			CDMA 1.5	CDMD 1.5
2,5 mm ² AWG 14 identification No. 5			CDMA 2.5	CDMD 2.5

- characteristics according to EN 61984:
10A 250V 4kV 3
10A 230/400V 4kV 2
- cULus (UL for USA and Canada), certified
- rated voltage according to UL/CSA: 600V
- insulation resistance: ≥ 10 GΩ
- ambient temperature limit: -40 °C ... +125 °C
- made of self-extinguishing thermoplastic resin UL 94V-0
- mechanical life: ≥ 500 cycles
- contact resistance: ≤ 3 mΩ
- for applications requiring higher voltages, please see the special voltage application section on page 65
- **it is recommended to crimp the contacts with crimping tools homologated by ILME** (please see the crimping tool section 10A contacts, CDF and CDM series on pages 708 - 741)
- for max. current load see the connector inserts derating diagram below; for more information see page 28



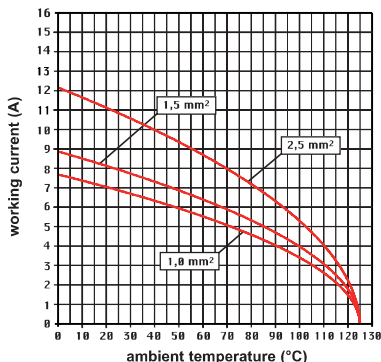
contacts side (front view)



CDF and CDM contacts

conductor section mm ²	conductor slot ϕA (mm)	conductors stripping length B (mm)
0,14-0,37	0,9	8
0,5	1,1	8
0,75	1,3	8
1,0	1,45	8
1,5	1,8	8
2,5	2,2	6

CD 80 poles connector inserts
Maximum current load derating diagram



CR CP coding pin with loss of one contact (page 689)



‡ for basic or high thickness gold plating, please refer to page 674

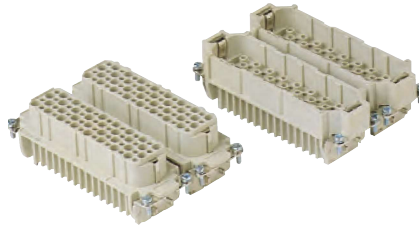
CD 128 poles + ⊕ 10A - 250V

enclosures:
size "104.62"

page:

C-TYPE IP65 or IP66/IP69	430
W-TYPE for aggressive environments	526
E-Xtreme® corrosion proof	547

inserts, crimp connections



10A crimp contacts silver and gold plated

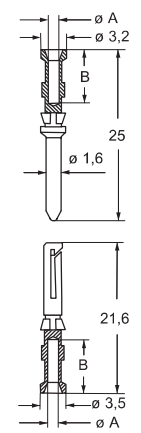
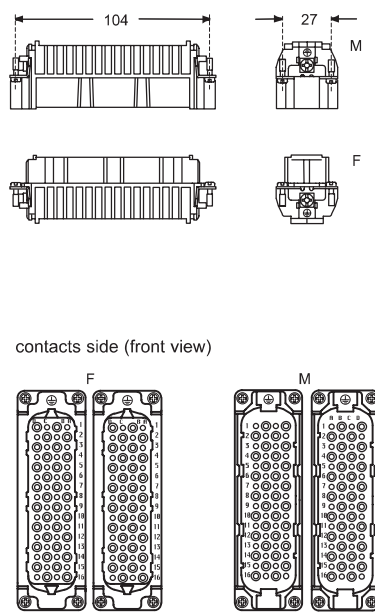


description	part No.	part No.	part No.	part No.
without contacts (to be ordered separately)				
female inserts	CDF 64	CDF 64		
male inserts	CDM 64	CDM 64		
10A female contacts				
0,14-0,37 mm ² AWG 26-22 identification No. 1			C DFA 0.3	C DFD 0.3
0,5 mm ² AWG 20 identification No. 2			C DFA 0.5	C DFD 0.5
0,75 mm ² AWG 18 identification No. ②			C DFA 0.7	C DFD 0.7
1 mm ² AWG 18 identification No. 3			C DFA 1.0	C DFD 1.0
1,5 mm ² AWG 16 identification No. 4			C DFA 1.5	C DFD 1.5
2,5 mm ² AWG 14 identification No. 5			C DFA 2.5	C DFD 2.5
10A male contacts				
0,14-0,37 mm ² AWG 26-22 identification No. 1			C DMA 0.3	C DMD 0.3
0,5 mm ² AWG 20 identification No. 2			C DMA 0.5	C DMD 0.5
0,75 mm ² AWG 18 identification No. ②			C DMA 0.7	C DMD 0.7
1 mm ² AWG 18 identification No. 3			C DMA 1.0	C DMD 1.0
1,5 mm ² AWG 16 identification No. 4			C DMA 1.5	C DMD 1.5
2,5 mm ² AWG 14 identification No. 5			C DMA 2.5	C DMD 2.5

silver plated

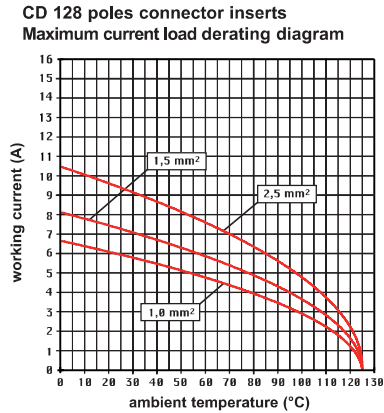
gold plated+

- characteristics according to EN 61984:
10A 250V 4kV 3
10A 230/400V 4kV 2
- us (UL for USA and Canada), EAC certified
- rated voltage according to UL/CSA: 600V
- insulation resistance: ≥ 10 GΩ
- ambient temperature limit: -40 °C ... +125 °C
- made of self-extinguishing thermoplastic resin UL 94V-0
- mechanical life: ≥ 500 cycles
- contact resistance: ≤ 3 mΩ
- for applications requiring higher voltages, please see the special voltage application section on page 65
- **it is recommended to crimp the contacts with crimping tools homologated by ILME** (please see the crimping tool section 10A contacts, CDF and CDM series on pages 708 - 741)
- for max. current load see the connector inserts derating diagram below; for more information see page 28



CDF and CDM contacts

conductor section mm ²	conductor slot ø A (mm)	conductors stripping length B (mm)
0,14-0,37	0,9	8
0,5	1,1	8
0,75	1,3	8
1,0	1,45	8
1,5	1,8	8
2,5	2,2	6



CR CP coding pin with loss of one contact (page 689)



† for basic or high thickness gold plating, please refer to page 674