



Order key

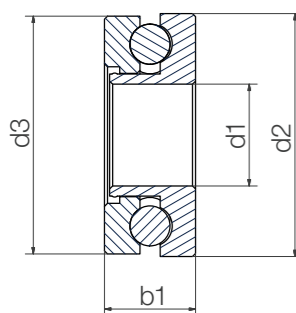
Type	Material
------	----------

BB-51104-B180-ES-D

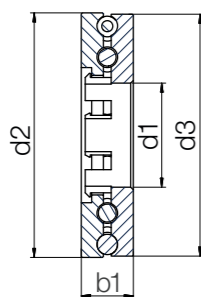
Ball bearings	Dimensions according to DIN 711	Face/cage material	Ball material	Double row
---------------	---------------------------------	--------------------	---------------	------------

Options
Ball material
 ES = Stainless steel
 GL = Glass
Suffix
 Blank = Single row
 D = Double row

Single or double row,
with stainless steel or glass balls



Single row bearing



Double row bearing

Technical data

Installation size	Single row	Double row	Load capacity		Max. speed [rpm]	Weight	
			stat. [N]	dyn. [N]		B180/ES [g]	B180/GL [g]
51100	●	-	200	250	600	6.61	4.12
51104	●	-	650	810	460	13.72	8.19
51104	-	●	975	1,215	460	18.96	8.99

Dimensions [mm]

Inner Ø	Outer Ø		Width	Cage/ball material combination		Part No.
	d1	d2		B180/ES	B180/GL	
10	24	23.5	9	●	●	BB-51100-B180-□
20	35	34.5	10	●	●	BB-51104-B180-□
20	47	46.5	10	●	●	BB-51104-B180-□-D

Order example:
 BB-51100-B180-ES = Thrust bearing with race material xirodur® B180, B180 cage and stainless steel balls

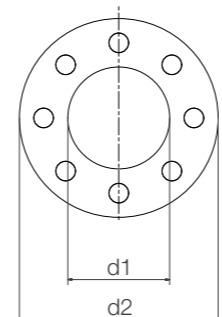
Available from stock



Standard type with stainless steel or glass balls



Slim Line design with stainless steel or glass balls



Order key

Type	Material
------	----------

BB-6004TW-B180-ES-SL

Ball bearings	Dimensions according to DIN 625-1	Axial thrust washer	Face material	Ball material	Slim Line
---------------	-----------------------------------	---------------------	---------------	---------------	-----------

Options
Ball material
 ES = Stainless steel
 GL = Glass
Suffix
 Blank = Standard
 SL = Slim Line

Technical data (related to metallic shafts)

Installation size	Slim Line	Recommended load capacity		Max. speed [rpm]	Weight	
		stat. [N]	dyn. [N]		B180/ES [g]	B180/GL [g]
626	-	341	425	2,000	1.35	0.81
608	-	482	600	1,700	2.25	1.17
6000	-	610	782	1,500	3.04	1.50
6000	●	405	500	1,500	2.09	1.20
6004	-	975	1,215	700	6.87	4.41
6006	-	925	1,540	600	5.51	3.39
6006	●	520	680	600	4.23	2.98

Dimensions [mm]

Inner Ø	Outer Ø		Width		Race/ball material combination		Part No.
	d1	d2	b1	b2	B180/ES	B180/GL	
6.2	18.8	2.0	3.18	●	●	BB-626TW-B180-□	
8.2	21.8	2.0	3.97	●	●	BB-608TW-B180-□	
10.2	25.8	2.0	4.76	●	●	BB-6000TW-B180-□	
10.2	25.8	2.0	3.97	●	●	BB-6000TW-B180-□-SL	
21.0	41.0	3.0	4.76	●	●	BB-6004TW-B180-□	
29.9	45.5	2.5	4.76	●	●	BB-6006TW-B180-□	
29.9	45.5	2.5	3.97	●	●	BB-6006TW-B180-□-SL	

Order example:
 BB-6000TW-B180-ES-SL = Thrust washer with race material xirodur® B180, stainless steel balls, Slim Line version

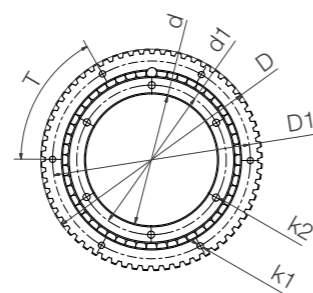
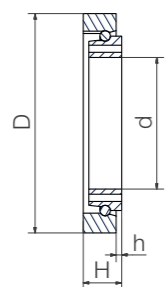
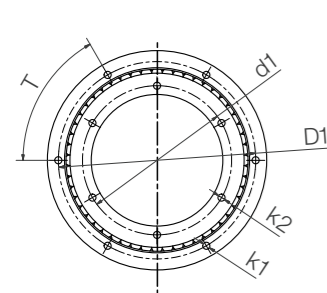
Available from stock



Stainless steel balls



Glass balls

Stainless steel balls,
with cage made from
xirodur® B180Stainless steel balls,
with outer drive ring (HDT5)

Technical data

Type	Load capacity		Max. permissible moment [Nm]	Max. speed [rpm]	Weight	
	Axial [N]	Radial [N]			ES [g]	glass [g]
Standard with stainless steel or glass balls						
RT-01-60	800	720	40	350	111.68	98.3
RT-01-100	1,600	1,250	60	250	283.85	243.76
Slewing ring ball bearings with xirodur® B180 cage						
RT-01-40-B180-30	500	260	30	900	63.46	–
RT-01-60-B180-30	600	300	30	800	101.22	–
RT-01-100-B180-30	1,020	760	55	650	248.90	–
RT-01-150-B180-30	2,000	1,100	75	600	398.00	–
RT-01-400-B180-30	5,800	2,900	170	500	–	6338
Slewing ring ball bearings with outer drive ring						
RT-01-60HDT5-B180-30	800	720	40	320	97.00	–



Order example:

BB-RT-01-60-ES = Standard slewing ring ball bearing with race material xirodur® B180 and stainless steel balls

BB-RT-01-60-B180-30-ES = Slewing ring ball bearing with race material xirodur® B180, xirodur® B180 cage and stainless steel balls

BB-RT-01-60-HDT5-B180-ES = Slewing ring ball bearing with race material xirodur® B180, outer drive ring and stainless steel balls

BB-RT-01-60-HDT5-B180-30-ES = Slewing ring ball bearing with race material xirodur® B180, outer drive ring, xirodur® B180 cage and stainless steel balls



Order key

Type	Design	Material
------	--------	----------

BB-RT-01-60-ES

Ball bearings	Slewing ring ball bearings	Type 01	Inner Ø	Ball material
---------------	----------------------------	---------	---------	---------------

Options

Ball material

ES = Stainless steel

GL = Glass



Order key with cage

Type	Design	Material
------	--------	----------

BB-RT-01-60-B180-30-ES

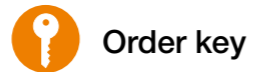
Ball bearings	Slewing ring ball bearings	Type 01	Inner Ø	Race material	Cage material	Ball material
---------------	----------------------------	---------	---------	---------------	---------------	---------------

Dimensions [mm]

d	d1	D	D1	h	H	T	k1	k2	Part No.
Standard with stainless steel or glass balls									
60	68	100	90	2.5	17.5	60	3.3	3.3	BB-RT-01-60- <input type="text"/>
100	110	160	150	5.0	20.0	60	5.2	5.2	BB-RT-01-100- <input type="text"/>
Slewing ring ball bearings with xirodur® B180 cage									
40	47	80	72	2.5	15	60	3.3	3.3	BB-RT-01-40-B180-30-ES
60	68	100	90	2.5	17.5	60	3.3	3.3	BB-RT-01-60-B180-30-ES
100	110	160	150	5.0	20	60	5.2	5.2	BB-RT-01-100-B180-30-ES
150	163	210	197	5.0	20	60	6.1	6.1	BB-RT-01-150-B180-30-ES
400	450	600	550	10.0	40	51.43	8.0	8.0	BB-RT-01-400-B180-30-GL
Slewing ring ball bearings with outer drive ring									
60	68	100	90	2.5	17.5	60	M3	3.3	BB-RT-01-60HDT5-B180-30-ES

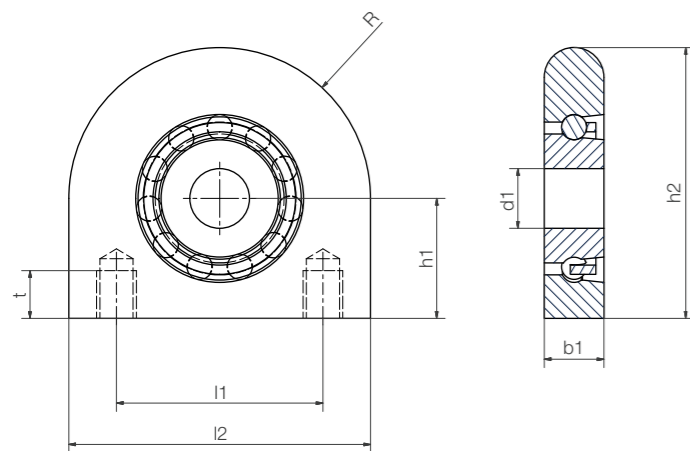


Available
from stock



Type	Material
ESTM-BB1-F25-B180-ES-SL	
Pillow block bearing	
Ball bearing, single row	
Fixed version	
Inner Ø	
Race/cage material	
Ball material	
Slim Line	

- FDA-compliant components
- Can withstand loads of up to approximately 50kg (depending on installation size)



Race/cage material
B180 = xirodur® B180
Ball material
ES = Stainless steel

Technical data

Type	Load capacity, radial		Max. speed [rpm]	Weight ES [g]
	stat. [N]	dyn. [N]		
ESTM-F15	270	350	1,250	86
ESTM-F17	280	360	1,200	85
ESTM-F20	290	370	1,150	83
ESTM-F25	480	520	850	119
ESTM-F30	500	550	840	163

Technical data

d1	b1	h1	h2	l1	l2	R	Thread	t	Part No.
15	15	30.2	68.2	52	76	38	M10	12	ESTM-BB1-F15-B180-ES-SL
17	15	30.2	68.2	52	76	38	M10	12	ESTM-BB1-F17-B180-ES-SL
20	15	30.2	68.2	52	76	38	M10	12	ESTM-BB1-F20-B180-ES-SL
25	17	36.5	78.5	56	84	42	M10	15	ESTM-BB1-F25-B180-ES-SL
30	19	42.9	89.9	66	94	47	M14	18	ESTM-BB1-F30-B180-ES-SL

