

robolink® D | Rotary axis | Technical data

Rotary axis with two PRT slewing rings, with plain bearings



Type Options

RL-D-20-101-38-01033

- robolink®
- Direct drive**
- Installation size
- Design
- Gear ratio
- Variation



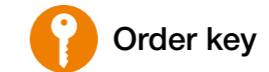
Technical data

Part No.	Size (H x W x D)	Shaft Ø	Trans- mission	Axis distance	Backlash	Breakaway torque	Max. axial dyn. load on output
	[mm]	[mm]	[mm/rev]	[mm]	[°]	[cNm]	[N]
RL-D-20-101-38-01033	90 x 80 x 67	8	1:38	31	< 0.5°	< 5	> 500
RL-D-20-101-70-01033	90 x 80 x 67	8	1:70	31	< 0.5°	< 5	> 500
RL-D-30-101-5-01033	110 x 100 x 94	10	1:5	40	< 0.5°	< 7	> 700
RL-D-30-101-50-01033	110 x 100 x 94	10	1:50	40	< 0.5°	< 7	> 700
RL-D-30-101-70-01033	110 x 100 x 94	10	1:70	40	< 0.5°	< 7	> 700
RL-D-50-101-48-01033	170 x 150 x 103	15	1:48	63	< 0.5°	< 10	> 1,200
RL-D-50-101-70-01033	170 x 150 x 103	15	1:70	63	< 0.5°	< 10	> 1,200

Part No.	Speed at max. load	Weight	Efficiency	Moment of breakage (static)	Max. output Dynamic torque 12rpm	
					Periodic use (<30%)	Continuous use
	[rpm]	[g]		[Nm]	[Nm]	[Nm]
RL-D-20-101-38-01033	20	610	0.45	30	10	5
RL-D-20-101-70-01033	20	610	0.35	20	5	2.5 (9rpm)
RL-D-30-101-5-01033	12	1,180	0.65	40	10	5
RL-D-30-101-50-01033	12	1,180	0.40	60	20	10
RL-D-30-101-70-01033	12	1,180	0.30	30	12	7.5 (6rpm)
RL-D-50-101-48-01033	8	3,050	0.40	180	50	25
RL-D-50-101-70-01033	8	3,050	0.30	140	40	20

robolink® D | Rotary axis | Technical data

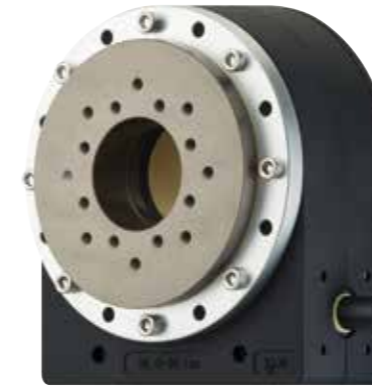
Rotary axis with one PRT slewing rings, with plain bearings



Type Options

RL-D-20-102-38-01035

- robolink®
- Direct drive**
- Installation size
- Design
- Gear ratio
- Variation



Technical data

Part No.	Size (H x W x D)	Shaft Ø	Trans- mission	Axis distance	Backlash	Breakaway torque	Max. axial dyn. load on output
	[mm]	[mm]	[mm/rev]	[mm]	[°]	[cNm]	[N]
RL-D-20-102-38-01035	90 x 80 x 67	8	1:38	31	< 0.5°	< 5	> 500
RL-D-20-102-70-01035	90 x 80 x 67	8	1:70	31	< 0.5°	< 5	> 500
RL-D-30-102-5-01035	110 x 100 x 94	10	1:5	40	< 0.5°	< 7	> 700
RL-D-30-102-50-01035	110 x 100 x 94	10	1:50	40	< 0.5°	< 7	> 700
RL-D-30-102-70-01035	110 x 100 x 94	10	1:70	40	< 0.5°	< 7	> 700
RL-D-50-102-48-01035	170 x 150 x 103	15	1:48	63	< 0.5°	< 10	> 1,200
RL-D-50-102-70-01035	170 x 150 x 103	15	1:70	63	< 0.5°	< 10	> 1,200

Part No.	Speed at max. load	Weight	Efficiency	Moment of breakage (static)	Max. output Dynamic torque 12rpm	
					Periodic use (<30%)	Continuous use
	[rpm]	[g]		[Nm]	[Nm]	[Nm]
RL-D-20-102-38-01035	20	470	0.45	30	10	5
RL-D-20-102-70-01035	20	470	0.35	20	5	2.5 (9rpm)
RL-D-30-102-5-01035	12	890	0.65	40	10	5
RL-D-30-102-50-01035	12	890	0.40	60	20	10
RL-D-30-102-70-01035	12	890	0.30	30	12	7.5 (6rpm)
RL-D-50-102-48-01035	8	2,300	0.40	180	50	25
RL-D-50-102-70-01035	8	2,300	0.30	140	40	20