

drylin® R liners | Product range

Long, closed design for round shafts – made from iglidur® A160
(compliant with Regulation (EU) No. 10/2011 and FDA guidelines)

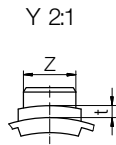
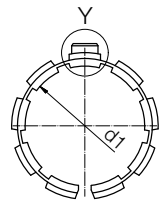
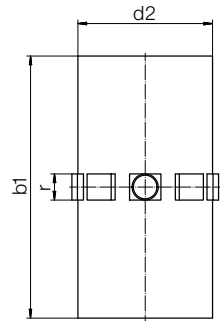


Order key

Type Size

A160 U M-01-10

iglidur® A160
Liner
Metric
Standard
Inner Ø d1



Compliant with Regulation (EU) No. 10/2011 and FDA guidelines for longer service life on hardened stainless steel shafts



⁷⁸⁾ According to igus® testing method ▶ Page 1146
Please note: Installation instructions ▶ Page 1079



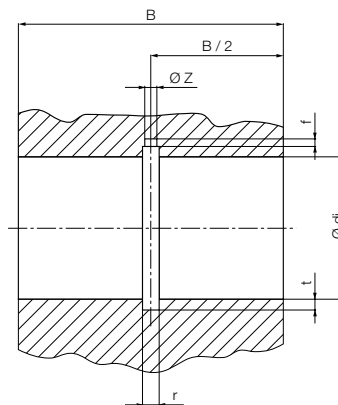
Min. -50°C
Max. +90°C

Dimensions [mm]

d1	d1 tolerance ⁷⁸⁾	d2	b1	r	t	Z	Weight [g]	Part No.
10	+0.03 +0.07	12	28	3.0	0.8	2.5	0.7	A160UM-01-10
12	+0.03 +0.07	14	31	3.0	0.8	3.0	1.0	A160UM-01-12
16	+0.03 +0.07	18	35	3.5	0.8	3.5	1.5	A160UM-01-16
20	+0.03 +0.07	23	44	5.0	0.8	3.5	3.3	A160UM-01-20
25	+0.03 +0.07	28	57	5.0	0.8	4.0	5.4	A160UM-01-25
30	+0.04 +0.09	34	67	5.0	0.8	4.0	9.9	A160UM-01-30
40	+0.04 +0.09	44	79	6.0	1.3	5.0	17.3	A160UM-01-40
50	+0.05 +0.15	55	99	7.0	1.3	6.0	36.3	A160UM-01-50

Housing hole for A160UM-01 | Dimensions [mm]

Shaft Ø	d _i H7	B h10	r +0.05	t +0.1	f +0.5	Z +0.2	Part No.
10	12	29	3.0	1.0	1.0	2.6	A160UM-01-10
12	14	32	3.0	1.0	1.5	3.1	A160UM-01-12
16	18	36	3.5	1.0	1.7	3.6	A160UM-01-16
20	23	45	5.0	1.0	2.0	3.6	A160UM-01-20
25	28	58	5.0	1.0	2.0	4.1	A160UM-01-25
30	34	68	5.0	1.0	2.0	4.1	A160UM-01-30
40	44	80	6.0	1.5	2.5	5.1	A160UM-01-40
50	55	100	7.0	1.5	2.5	6.1	A160UM-01-50



Can be combined with:



RJUM-01/-03
TJUM-01/-03



RJUM-06/-06-LL



FJUM-01/-02

My sketches

