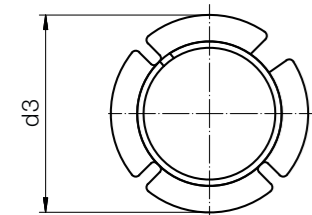
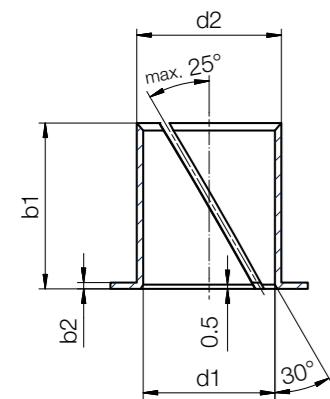




Image exemplary



r = max. 0.5mm

Dimensions [mm]

d1	d1 tolerance <sup>7)</sup>	d2 <sup>9)</sup>	d3 ±0.40	b1 -0.40	b2 -0.13	Part No.
4	+0.025 +0.075	5.2	7.0	4.0	0.6	<b>MYM-04-04</b>
5	+0.025 +0.075	6.2	8.0	5.0	0.6	<b>MYM-05-05</b>
6	+0.025 +0.075	7.2	9.5	6.0	0.6	<b>MYM-06-06</b>
8	+0.025 +0.075	9.6	12.0	8.0	0.8	<b>MYM-08-08</b>
10	+0.025 +0.075	11.6	15.0	10.0	0.8	<b>MYM-10-10</b>
12	+0.025 +0.075	13.6	18.0	12.0	0.8	<b>MYM-12-12</b>
14	+0.025 +0.075	15.6	21.0	14.0	0.8	<b>MYM-14-14</b>
16	+0.025 +0.075	17.6	24.0	16.0	0.8	<b>MYM-16-16</b>
20	+0.025 +0.075	21.6	30.0	16.0	0.8	<b>MYM-20-16</b>
20	+0.025 +0.075	21.6	30.0	20.0	0.8	<b>MYM-20-20</b>
25	+0.025 +0.075	27.4	37.5	25.0	1.2	<b>MYM-25-25</b>

<sup>7)</sup> d1 value is measured with a plug gauge after fitting into a reference housing d2 (+0.005)

<sup>9)</sup> Recommended housing hole tolerance: H9

Order key

Type	Dimensions [mm]
------	-----------------

**M Y M-04-04**

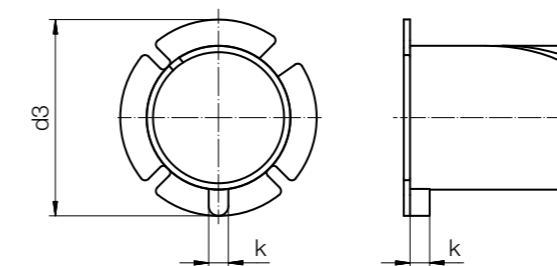
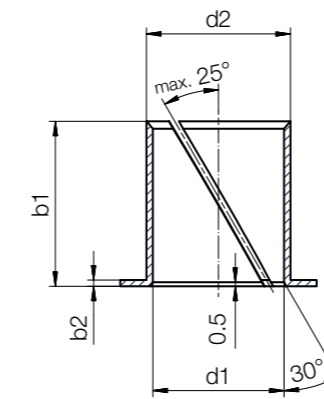
iglidur® material
<b>Design</b>
Metric
Inner Ø d1
Total length b1

**Material:**  
iglidur® M250 ► Page 107  
With anti-rotation feature ► Page 593

Imperial dimensions available  
► From page 1604



Image exemplary



Dimensions [mm]

d1	d1 tolerance <sup>8)</sup>	d2 <sup>9)</sup>	d3 ±0.40	b1 -0.40	b2 -0.13	k	Part No.
4	+0.025 +0.075	5.20	7.00	4.00	0.60	1.0	<b>MYM-04-04-K</b>
5	+0.025 +0.075	6.20	8.00	5.00	0.60	1.0	<b>MYM-05-05-K</b>
6	+0.025 +0.075	7.20	9.50	6.00	0.60	1.5	<b>MYM-06-06-K</b>
10	+0.025 +0.075	11.60	15.00	10.00	0.80	2.0	<b>MYM-10-10-K</b>
14	+0.025 +0.075	15.60	21.00	14.00	0.80	3.0	<b>MYM-14-14-K</b>

<sup>8)</sup> d1 value is measured with a plug gauge after fitting into a reference housing d2 (+0.005)

<sup>9)</sup> Recommended housing hole tolerance: H9

Order key

Type	Dimensions [mm]	Option
------	-----------------	--------

**M Y M- 04 - 04 - K**

iglidur® material
<b>Design</b>
Metric
Inner Ø d1
Total length b1
Anti-rotation feature

**Material:**  
iglidur® M250 ► Page 107

Imperial dimensions available  
► From page 1604