



Order key

Type Dimensions [mm]

**M K M-1012-10**

iglidur® material	<b>Design</b>	Metric	Inner Ø d1	Outer Ø d2	Metal sheet thickness
-------------------	---------------	--------	------------	------------	-----------------------

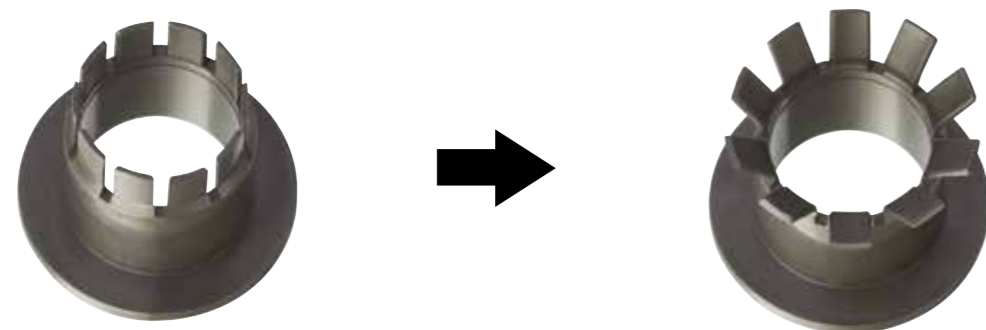
Material:  
iglidur® M250 ▶ Page 107

Sample dimension [mm]

d1	d1 tolerance <sup>3)</sup> E10	d2	d3 d13	b1 h13	b2 h13	b3 +0.1/+0.7	s ±0.1	Part No.
10	+0.025 +0.083	12	18	14	1	10	0.4	<b>MKM-1012-10</b>

<sup>3)</sup> After press-fit. Testing methods ▶ Page 57

Fitting:



Press in, fold down, ready: captive, axial load on both sides



Please contact us if you need a custom-made double flange bearing for your application. We will help you with your design and create an appropriate proposal, drawing on the experience that we have with a large number of custom bearing solutions.



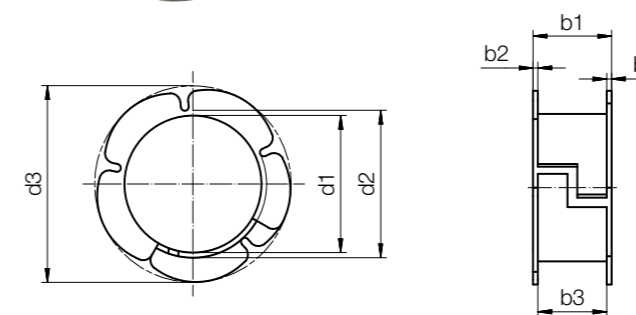
Order key

Type Dimensions [mm]

**M D M-1213-06**

iglidur® material	<b>Design</b>	Metric	Inner Ø d1	Outer Ø d2	Metal sheet thickness
-------------------	---------------	--------	------------	------------	-----------------------

Material:  
iglidur® M250 ▶ Page 107



Sample dimension [mm]

d1	d1 tolerance <sup>8)</sup>	d2	d3	b1	b2	b3	Part No.
12	+0.050 +0.160	13	16.5	7	0.5	6.0	<b>MDM-1213-06</b>

<sup>8)</sup> d1 value is measured with a plug gauge after fitting into a reference housing d2 (+0.005)

Fitting:



Please contact us if you need a custom-made double flange bearing for your application. We will help you with your design and create an appropriate proposal, drawing on the experience that we have with a large number of custom bearing solutions.