

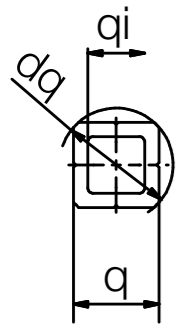
Order key

Type	Size	Option
------	------	--------

AWM Q - 10 - 1000

Aluminium shaft	Metric	Square design	Installation size	Length [mm]
-----------------	--------	---------------	-------------------	-------------

Minimum saw lengths  
▶ Page 961



Dimensions [mm]

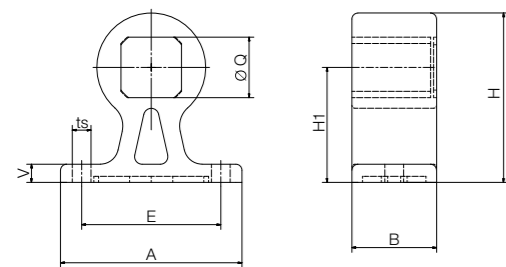
Part No.	Weight [kg/m]	q	dq	qi ±0.02	Max. length
AWMQ-10	0.082	7.5	10	5	1,500
AWMQ-12	0.193	12	16	8.5	1,500
AWMQ-20	0.46	20	25	15	3,000

Accessories

Shaft end supports made from plastic



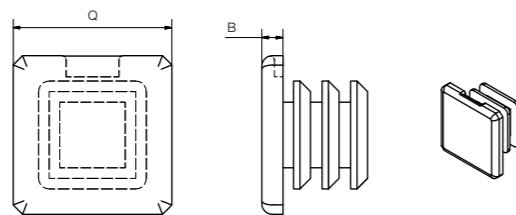
- Cost-effective mounting option
- Can also be used as floating bearing



Dimensions [mm]

Part No.	A	H	B	Q	H1	E	ts	V
STZ-Q10-01-FL	30	21	14	7.5	14	20	3.3	3
STZ-Q20-01-FL	60	56	28	20	38	46	6.2	6

End caps for square section linear rail



Dimensions [mm]

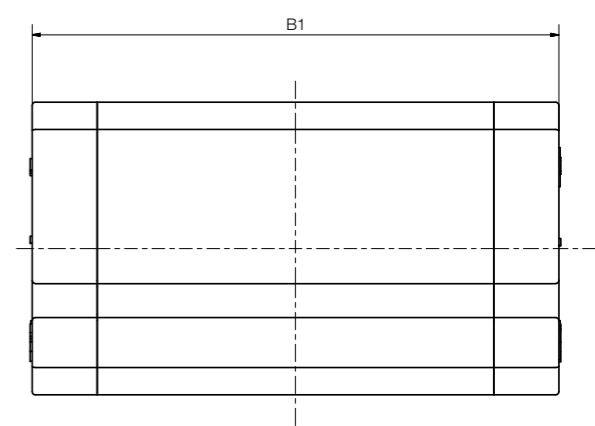
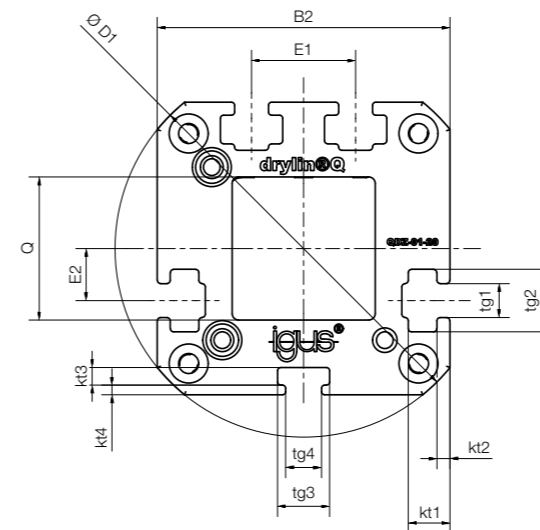
Part No.	Q	B
STZ-Q10-01-C	7.5	1
STZ-Q20-01-C	20	5

Order key

Type	Size
------	------

QWE - 01 - 20

Square	Linear carriage	Adjustable	Standard design	Installation size
--------	-----------------	------------	-----------------	-------------------



Dimensions [mm]

Part No.	Weight [g]	M max. [Nm]	B1	B2 h7	D1	Q	E1	E2	tg1	tg2	tg3	tg4	kt1	kt2	kt3	kt4
QWE-01-12	110	5	80	34	44	12	12	6	5.5	8	8	-	-	-	3	1.25
QWE-01-20	210	10	81	45	58	20	16	8	5.5	9.6	8	5.5	6.4	2	2.7	1.5

Accessories: Slot nuts



Slot nuts offers attachment options (for example sensors) on four sides of the housing. 8 pieces are included in the delivery of a QWE carriage.  
Part No.: **NOR-20602**

Can be combined with:



AWMQ-12

AWMQ-20

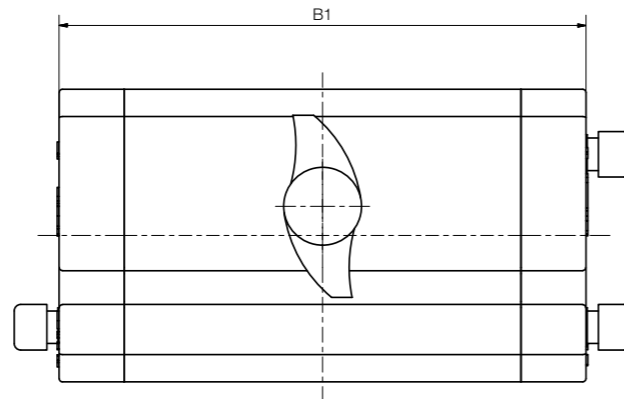
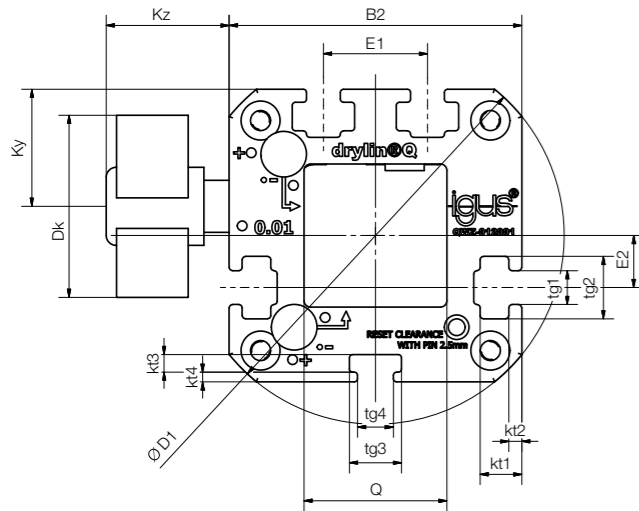


Order key

Type	Size	Options
------	------	---------

**Q W E - 01 - 20 - HKA**

Square	Linear carriage	Adjustable	Standard design	Installation size	Manual clamp
--------	-----------------	------------	-----------------	-------------------	--------------



### Dimensions [mm]

Part No.	Weight [g]	M max. [Nm]	B1	B2 h7	D1	Q	E1	E2	tg1	tg2	tg3	tg4
QWE-01-12-HKA	-	-	80	34	44	12	12	6	5.5	8	8	-
QWE-01-20-HKA	215	10	81	45	58	20	16	8	5.2	9.6	8	5.5

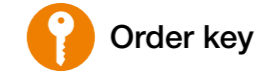
Part No.	kt1	kt2	kt3	kt4	Dk	Ky	Kz
QWE-01-12-HKA	-	-	3	1.25	18	14	19
QWE-01-20-HKA	6.4	2	2.7	1.5	28	18	19

**i** The manual clamp thread was developed for simple tasks. The creep behaviour of the clamped plastic causes a reduction in clamping force over time (up to 70%). Therefore no safety-relevant parts may be clamped. Please contact our technical consultant, if you require other options for the clamping.

Can be combined with:



AWMQ-20

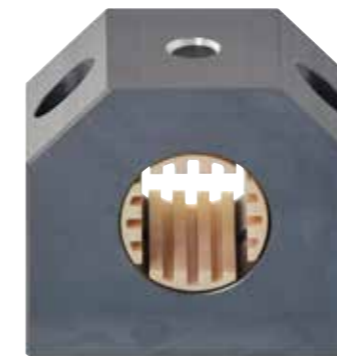


Order key

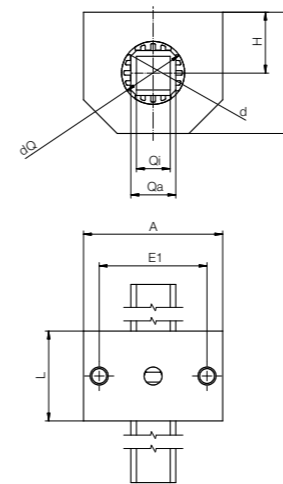
Type	Size
------	------

**Q J R M T - 05 - 20**

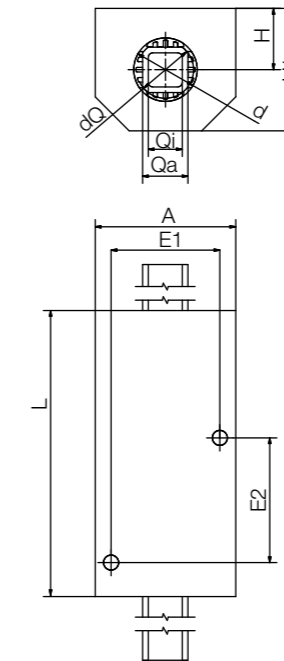
Square	iglidur® J	Closed design	Metric	Tandem (optional)	Compact design	Installation size
--------	------------	---------------	--------	-------------------	----------------	-------------------



QJRM-05-20



QJRM-05-20



### Technical data [mm]

Part No.	Weight [kg]	Mx [Nm]	Surface pressure	
			dynamic [N]	static [N]
QJRM-05-20	0.25	5	1,500	10,500
QJRM-05-20	0.55	10	1,500	10,500

### Dimensions [mm]

Part No.	A	H ±0.02	H1	dQ	Qa	Qi	E1 ±0.15	E2 ±0.15	d	L
QJRM-05-20	62	27	54	25	20	15	48	-	28	40
QJRM-05-20	62	27	54	25	20	15	48	55	28	85

Can be combined with:



AWMQ-20

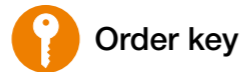
With flange



QJFM-02-...



QJFMT-01-...

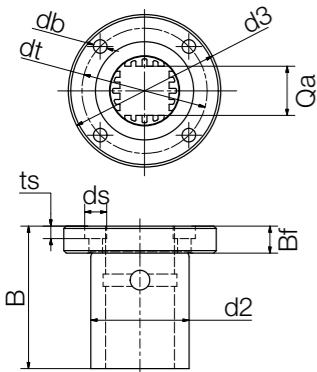


Order key

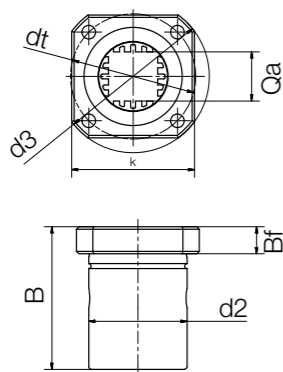
Type	Option	Size
<b>Q J F M T - 02 - 10</b>		
Square	iglidur® J	With flange
		Metric
		Tandem (optional)
		Design
		Installation size

Options:  
01 = Round flange  
02 = Square flange

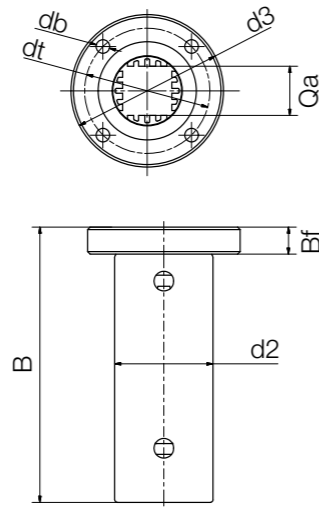
QJFM-01



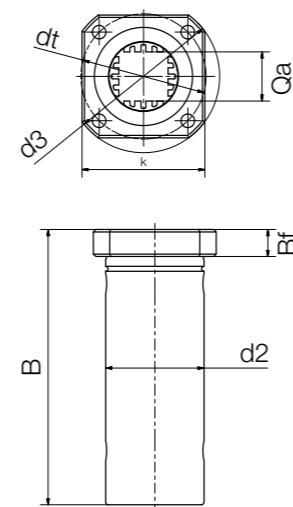
QJFM-02



QJFMT-01



QJFMT-02



### Technical data and dimensions [mm]

Part No.	Weight [kg]	Surface pressure		Mx [Nm]
		dynamic [N]	static [N]	
QJFM-01-20	0.14	1,500	10,500	5
QJFM-02-20	0.14	1,500	10,500	5
QJFMT-02-10	0.038	-	-	3
QJFMT-01-20	0.24	1,500	10,500	10
QJFMT-02-20	0.24	1,500	10,500	10

Part No.	k	d2 h7	Bf	Qa	d3 ±0.15	dt ±0.15	B	db	ds	ts
QJFM-01-20	-	40	11	20	62	51	58	5.5	9.0	5.1
QJFM-02-20	50	40	11	20	62	51	58	5.5	9.0	5.1
QJFMT-02-10	30	19	9	7.5	39	29	52	4.5	7.5	4.1
QJFMT-01-20	-	40	11	20	62	51	112	5.5	9.0	5.1
QJFMT-02-20	50	40	11	20	62	51	112	5.5	9.0	5.1

Can be combined with:

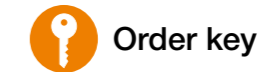


AWMQ-10



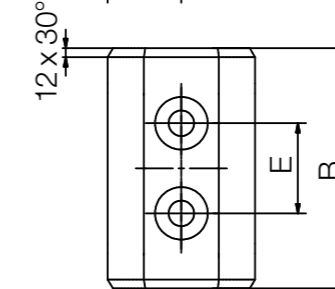
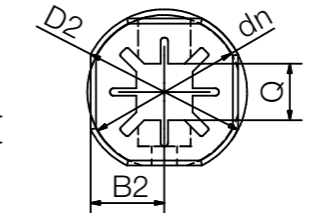
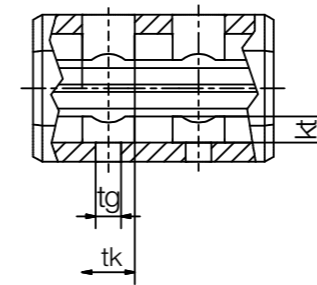
AWMQ-20

Q10 pillow blocks



Order key

Type	Size
<b>Q J R M P - 01 - 10</b>	
Square	iglidur® J
	Closed design
	Metric
	Solid plastic
	Standard design
	Installation size



Manual clamp available.  
Suffix "-HKA"

### Dimensions [mm]

Part No.	Weight [g]	M max. [Nm]	B	B2	D2	dn	E	Q	tk	tg	kt
QJRMP-01-10	11.3	3	32	9.8	22	22	12	7.5	6	3.4	3.5



Pipette unit equipped with drylin® Q square linear guide combined with drylin® GRW cantilever axis and NEMA stepper motor

Can be combined with:



AWMQ-10



- Hollow rail for supply lines (compressed air, cable)
- Small space requirement
- A host of possible applications

Single components



Adapter for flange shaft block

Part No.  
STZ-Q10-AR-1012-16



Adapter kit e.g. for grippers/sensors

Part No.  
STZ-Q10-01-AM



Plastic shaft end supports

Part No.  
STZ-Q10-01-FL  
STZ-Q10-01-LL



Chain connection for e-chain® E2 micro

Part No.  
STZ-Q10-01-AC-E2



End caps for square-section rail

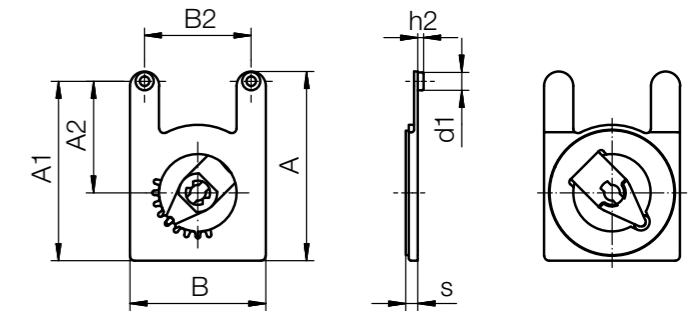
Part No.  
STZ-Q10-01-C  
STZ-Q20-01-C



- Clearance-reduced guidance of the lifting columns by adjustment mechanism
- Low-cost due to injection moulding
- Lightweight solid plastic solution
- Lubrication-free, wear-resistant, maintenance-free due to dry-tech® polymer iglidur® J
- Corrosion-free

Order key

Type	Option	Size
ASD J	- 28	- 025
Type	igidur® J	Width B
		Installation size



Dimensions [mm]

Part No.	Weight [g]	s		A	B	A1	A2	B2 ±0.15	d1 -0.1	h2 ±0.1
		Min.	Max.							
ASDJ-28-025 <b>New</b>	1.9	2.2	2.8	39	28	37	23	22	3.7	1.2



Adjustment key Part No.  
ASDZ-012817

