



igumid G housing, PA cage, stainless steel balls

igumid G housing, PA cage, glass balls

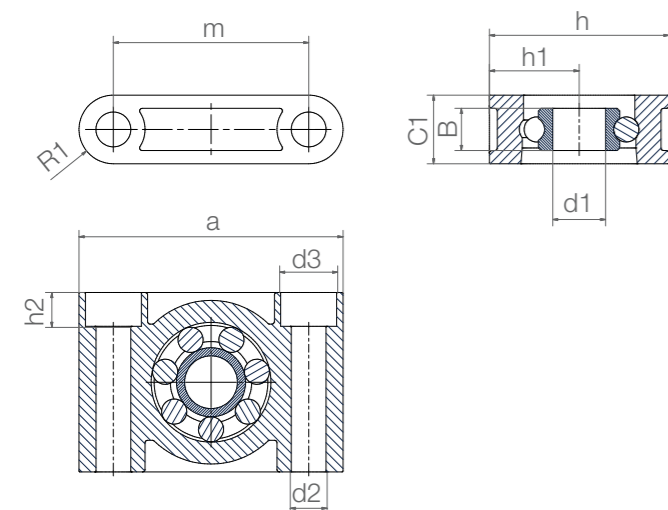


Type Material

ESTM-BB1-F06-B180-ES

Pillow block bearing	Ball bearing, single row	Fixed version	Inner Ø	Race material	Ball material
----------------------	--------------------------	---------------	---------	---------------	---------------

Race material
B180 = xirodur® B180
 Options:
 Ball material
ES = Stainless steel
GL = Glass



Technical data

Type	Radial load capacity		Max. speed [rpm]	Weight	
	stat. [N]	dyn. [N]		B180/ES [g]	B180/GL [g]
ESTM-F06	41	43	2,600	7.7	6.7
ESTM-F10	110	130	1,900	20.2	18.2
ESTM-F20	250	320	1,150	54.1	47.7

Dimensions [mm]

Inner Ø d1	Hole Ø d2	d3	h	h1	h2	a	m	C1	B	R1	Part No.
6	5.5	-	22	11	-	36	26	10	6	5.0	ESTM-BB1-F06-B180- <input type="checkbox"/>
10	6.6	10.6	34	17	6.6	50	37	13	8	6.5	ESTM-BB1-F10-B180- <input type="checkbox"/>
20	9.0	14.0	48	24	8.6	72	54	18	12	9.0	ESTM-BB1-F20-B180- <input type="checkbox"/>

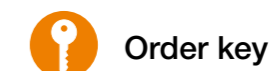
Order example:
 ESTM-BB1-F06-B180-ES = Pillow block bearing, fixed version, made from xirodur® B180 with stainless steel balls

Available from stock



igumid G housing, PA cage, stainless steel balls

igumid G housing, PA cage, Glass balls

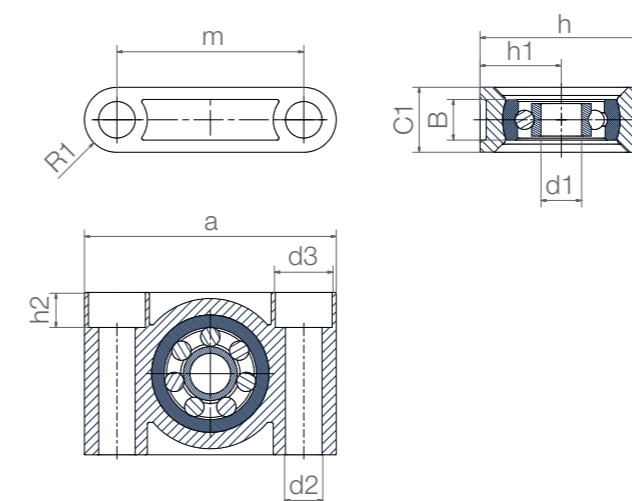


Type Material

ESTM-BB1-P 08-B180-ES

Pillow block bearing	Ball bearing, single row	Pivoting version	Inner Ø	Race material	Ball material
----------------------	--------------------------	------------------	---------	---------------	---------------

● Compensation of misalignment errors



Race material
B180 = xirodur® B180
 Options:
 Ball material
ES = Stainless steel
GL = Glass

Technical data

Type	Radial load capacity		Max. speed [rpm]	Weight	
	stat. [N]	dyn. [N]		B180/ES [g]	B180/GL [g]
ESTM-P08	80	94	2,200	19.6	18.2
ESTM-P10	110	130	1,900	32.9	30.3
ESTM-P12	130	147	1,750	54.8	52.8

Dimensions [mm]

Inner Ø d1	Hole Ø d2	d3	h	h1	h2	a	m	C1	B	R1	Max. pivot angle	Part No.
8	6.6	10.6	34	17	6.4	50	37	13	8	6.5	±5°	ESTM-BB1-P08-B180- <input type="checkbox"/>
10	9.0	14.0	40	20	8.6	62	46	16	10	8	±5°	ESTM-BB1-P10-B180- <input type="checkbox"/>
12	9.0	14.0	48	24	8.6	72	54	18	12	9	±5°	ESTM-BB1-P12-B180- <input type="checkbox"/>

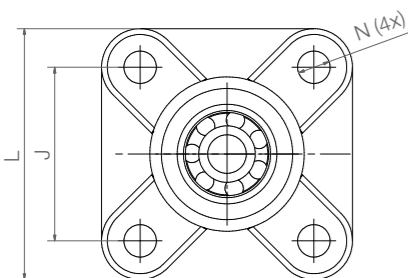
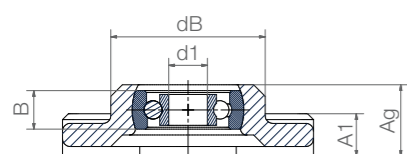
Order example:
 ESTM-BB1-P08-B180-ES = Pillow block bearing, pivoting version, made from xirodur® B180 with stainless steel balls

Available from stock



igumid G housing,
PA cage,
stainless steel balls or
glass balls

- Compensation of misalignment errors



Order key

Type	Material
------	----------

EFSM-BB1-P 08-B180-ES

4-hole fixed flange ball bearings	Ball bearing, single row	Pivoting version	Inner Ø	Face material	Ball material
-----------------------------------	--------------------------	------------------	---------	---------------	---------------

Race material

B180 = xirodur® B180

Options:

Ball material

ES = Stainless steel

GL = Glass

Technical data

Type	Radial load capacity		Max. speed [rpm]	Weight	
	stat. [N]	dyn. [N]		B180/ES [g]	B180/GL [g]
EFSM-P08	80	94	2,200	25.2	24.0
EFSM-P10	110	130	1,900	48.8	46.2
EFSM-P12	130	147	1,750	80.0	77.7

Dimensions [mm]

Inner Ø d1	dB d2	L	J	A1	Ag	B	N	Max. pivot angle	Part No.
8	32.5	52	36	9	15.5	8	6.4	±20°	EFSM-BB1-P08-B180- <input type="checkbox"/>
10	40.0	65	45	11	18.8	10	8.4	±20°	EFSM-BB1-P10-B180- <input type="checkbox"/>
12	48.0	74	52	14	23.5	12	8.4	±20°	EFSM-BB1-P12-B180- <input type="checkbox"/>



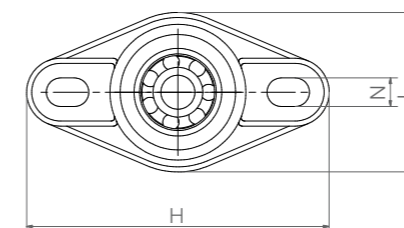
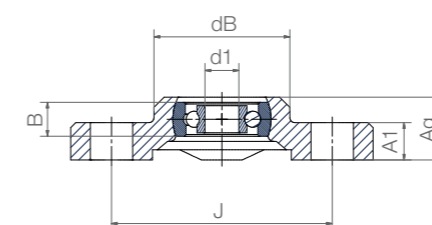
Order example:

EFSM-BB1-P08-B180-ES = 4-hole fixed flange ball bearing with race material xirodur® B180 and stainless steel balls

Available
from stock

igumid G housing,
PA cage,
stainless steel balls or
glass balls

- Trouble-free readjustment thanks to elongated holes
- Precise alignment of the bearings not necessary



Order key

Type	Material
------	----------

EFOM-BB1-P 08-B180-ES

2-hole fixed flange ball bearings	Ball bearing, single row	Pivoting version	Inner Ø	Face material	Ball material
-----------------------------------	--------------------------	------------------	---------	---------------	---------------

Race material

B180 = xirodur® B180

Options:

Ball material

ES = Stainless steel

GL = Glass

Technical data

Type	Radial load capacity		Max. speed [rpm]	Weight	
	stat. [N]	dyn. [N]		B180/ES [g]	B180/GL [g]
EFOM-P08	80	94	2,200	19.5	18.1
EFOM-P10	110	130	1,900	36.3	33.6
EFOM-P12	130	147	1,750	61.7	59.4

Dimensions [mm]

Inner Ø d1	dB d2	H	L	J	A1	Ag	B	N	Max. pivot angle	Part No.
8	32.5	72.6	38	53	10	15.5	8	6.4x10.1	±20°	EFOM-BB1-P08-B180- <input type="checkbox"/>
10	40.0	89.0	47	65	11	18.8	10	8.4x12.5	±20°	EFOM-BB1-P10-B180- <input type="checkbox"/>
12	48.5	101.0	58.5	75	14	23.5	12	8.4x12.5	±20°	EFOM-BB1-P12-B180- <input type="checkbox"/>



Order example:

EFOM-BB1-P08-B180-ES = 2-hole fixed flange ball bearing with race material xirodur® B180 and stainless steel balls

Available
from stock

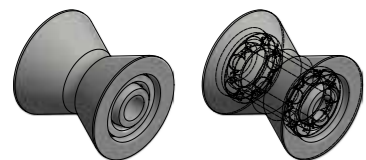
Customised and cost-effective



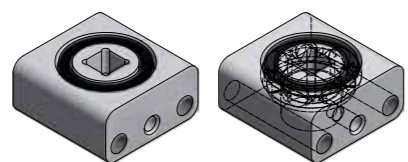
Infinite possibilities

Customised & cost-effective: your polymer ball bearing in the required design, material and quantity.

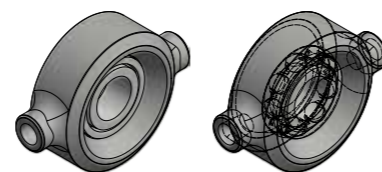
- Machined or injection-moulded
- Square or round
- With flange, outer toothed profile, etc.
- In customised quantity
- Lubrication and maintenance-free
- Cost-effective
- Select from different xirodur® materials



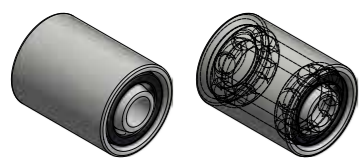
Guide roller for rubber seals in car production: which replaced a special unavailable roller



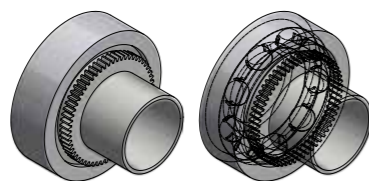
Non-magnetic for drylin® linear guide: design of a ball bearing with square housing, square shaft and glass balls



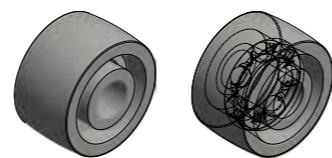
Consumer product camera stabilizer: injection-moulded special parts to improve engineered solution



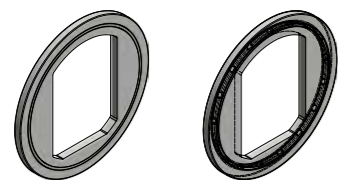
Blood pumps (peristaltic): lubrication-free and longer service life



Gear-driven shaft: one-part solution for full integration



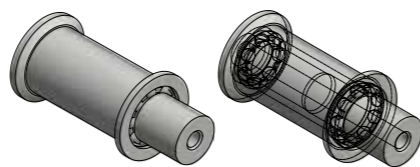
Roller for belt guide in ATM cash machines



Tension rollers in rubber production



Bearings for cash machines: lubrication-free and integration of 2 rubber rings for better paper grip



Tension roller for tape deflection: one-part solution (6 in 1)

In 3 steps to your individual ball bearing

1. Submit an enquiry

Fill in the form with some basic information: quantity and requirement, such as food contact, dirt resistance, etc. and upload the CAD files, for example.

After one of our specialists has contacted you for a consultation, you will receive a quotation.

2. We manufacture your required component

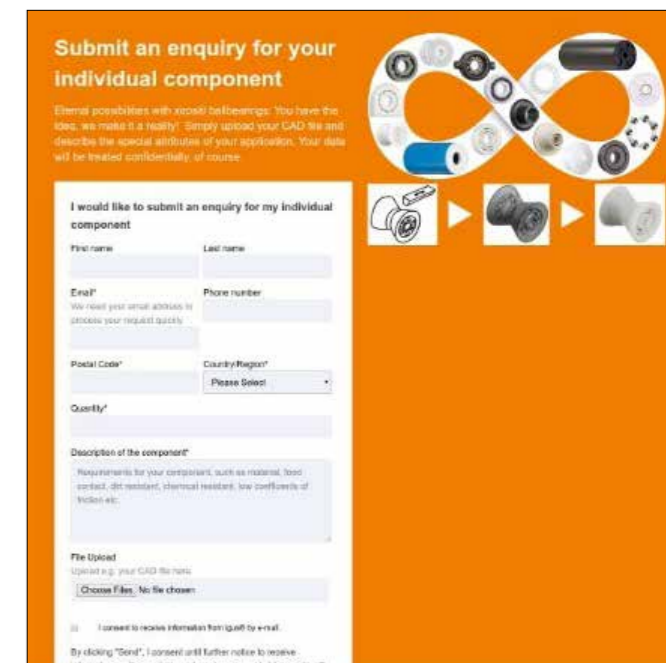
Upon order, igus® starts the production process.

3. You receive your product

Your required component is ready to ship and delivered quickly.

Submit an enquiry:

► www.igus.eu/xiros-specialparts



igus® test lab

The material combinations included in xiros® ball bearings are subjected to a large number of load and speed tests in the igus® test laboratory. The test results can be used to determine service life and suitability for both standard and special parts.

