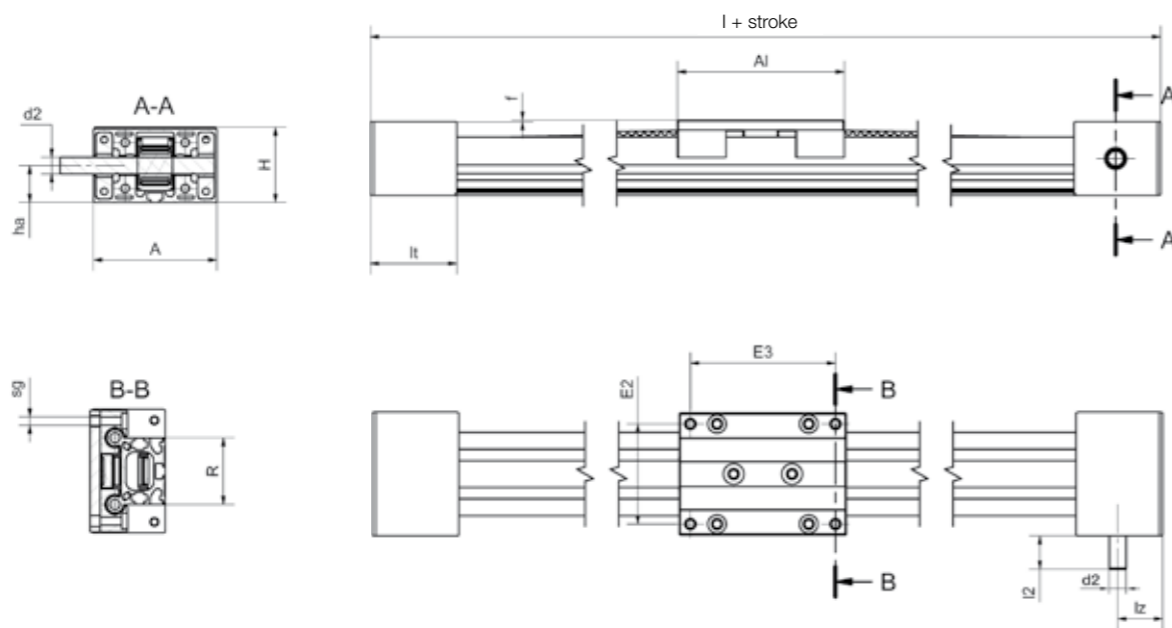
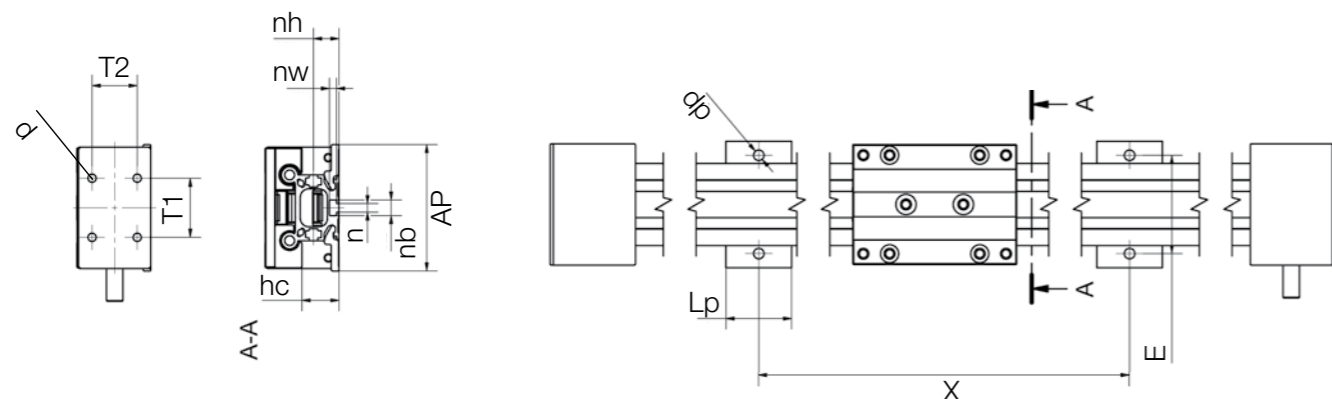


- Fast positioning of small loads
- Quiet operation and flat design
- Drive pin on one or both sides
- Linear carriages available in different lengths (except for econ version)
- Configurable with motor as a ready-to-install linear drive
- Specialist in deep-freeze, underwater and spray-water areas ► **Page 1431**



Connecting dimensions



Order key

Order example

ZLW-0630-02-B



Options:

Type

02 = With deep groove ball bearings

Design

E = econ series (0630/1040)
B = Basic series (0630/1040)
S = Standard series (all sizes)

Order key specialists

Order example

ZLW-1040-LT-02-S



Options:

Variation

LT = For deep-freeze applications down to -30°C
UW = For underwater applications
SW = For spray-water applications

Type

02 = With deep groove ball bearings

Design

S = Standard series

Dimensions [mm]

Part No.	A	AI	H	E2	E3	I	R	f	lt	sg	ha	hc	lz	l2	d2
	-0.3			±0.15	±0.15		±0.15		±0.3						h9
ZLW-0630-02	54	60	31	45	51	144	30	3	42	M4	14	22.5	20.5	20	8
ZLW-0660	85	100	31	76	91	184	61	3	42	M4	14	22.5	20.5	19.5	8
ZLW-1040-02	74	100	44	60	87	204	40	1	52	M6	22	22.5	27	20	10
ZLW-1040-LT-02-S	74	100	44	60	87	204	40	1	52	M6	22	22.5	27	20	10
ZLW-1040-UW-02-S	74	100	44	60	87	204	40	1	52	M6	22	22.5	27	20	10
ZLW-1040-SW-02-S	74	100	44	60	87	204	40	1	52	M6	22	22.5	27	20	10
ZLW-1080-02	90	100	44	94	87	204	74	1	52	M6	22	22.5	24.5	12	10
ZLW-1660-02	104	100	72	86	82	252	60	2	76	M8	43	22.5	38	20	14

Connecting dimensions [mm]

Part No.	X	E	AP	Lp	dp	n	nb	nw	nh	T1	T2	d
		±0.2	-1.0							±0.25	±0.25	
ZLW-0630-02 ¹⁰⁹⁾	variable	40	52	15	5.5	-	-	4.3	7	20	21	3.2
ZLW-0660	variable	40	52	15	5.5	5.2	9.5	4.3	7	20	21	3.2
ZLW-1040-02	variable	60	78	40	6.4	5.2	9.5	4.3	15.5	36	26.5	5.0
ZLW-1040-LT-02-S	variable	60	78	40	6.4	5.2	9.5	4.3	15.5	36	26.5	5.0
ZLW-1040-UW-02-S	variable	60	78	40	6.4	5.2	9.5	4.3	15.5	36	26.5	5.0
ZLW-1040-SW-02-S	variable	60	78	40	6.4	5.2	9.5	4.3	15.5	36	26.5	5.0
ZLW-1080-02	variable	94	111	40	6.4	5.2	9.5	4.36	15.5	36	27	M6
ZLW-1660-02	variable	100	122	40	9	10	15.4	13	27.6	65	60	M5

¹⁰⁹⁾ Basic version: 6mm square, plastic adapter for pin diameter 10mm included