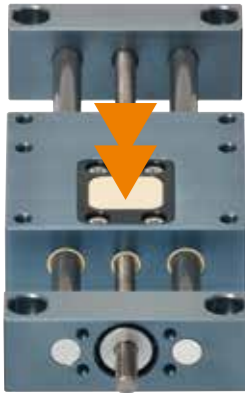
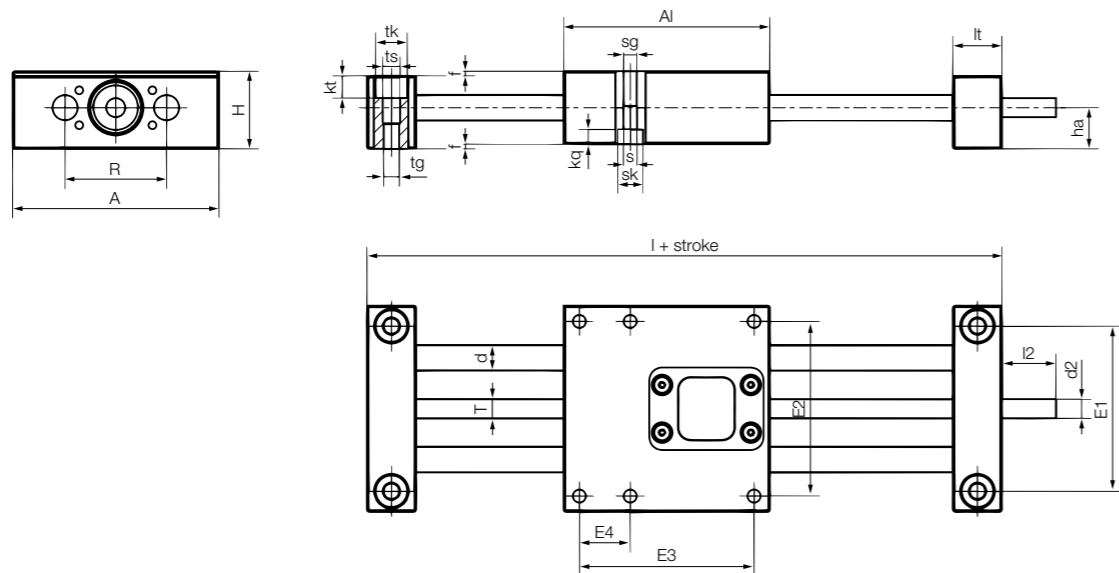


With "Fast-Forward" quick release mechanism



- Fast manual format adjustments
- Precise aluminium version
- Variable stroke length
- Multi-carriage solutions
- Recommended only for horizontal applications
- Available accessories ► Page 1503
- Available with motor



Technical data

Part No.	Max. stroke length [mm]	Aluminium shaft		Max. static load capacity radial [N]
		Weight [kg]	Additional (per 100mm) [kg]	
SHT-08-AWM-FF	300	0.35	0.04	100
SHT-12-AWM-FF	750	1.1	0.1	2,800

Dimensions [mm]

Part No.	A	Al	H	E1	E2	E3	E4	I	R	It	I2	d2
SHT-08-AWM-FF	65	65	23	52	55	55	16	96	32	15.5	17	6
SHT-12-AWM-FF	85	85	34	70	73	73		145	42	30	17	Tr10x2 ⁹²⁾

Part No.	f	tk	ts	tg	kt	s	sk	sg	kg	d	T	ha
SHT-08-AWM-FF	1.5	10 ±0.1	5.5	M6	7	4.2	8	M5	4.6	8	6	13
SHT-12-AWM-FF	2	11 ±0.1	6.6	M8	6.4	6.3	10	M6	6.0	12	Tr10x2	18

⁹²⁾ Lead screw end unmachined

With "Fast-Forward" quick release mechanism



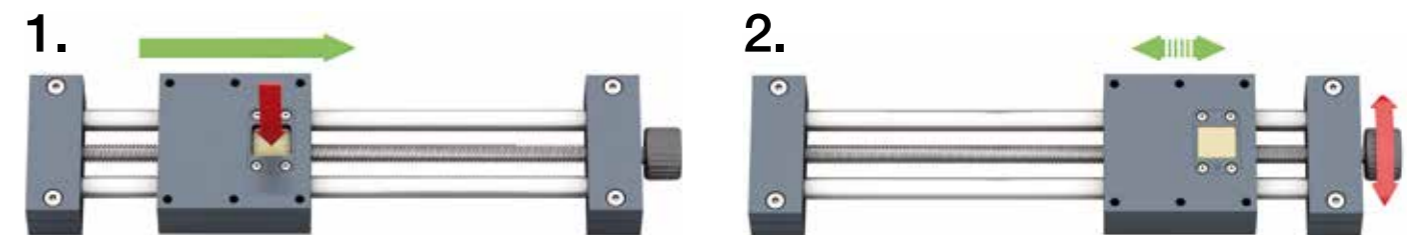
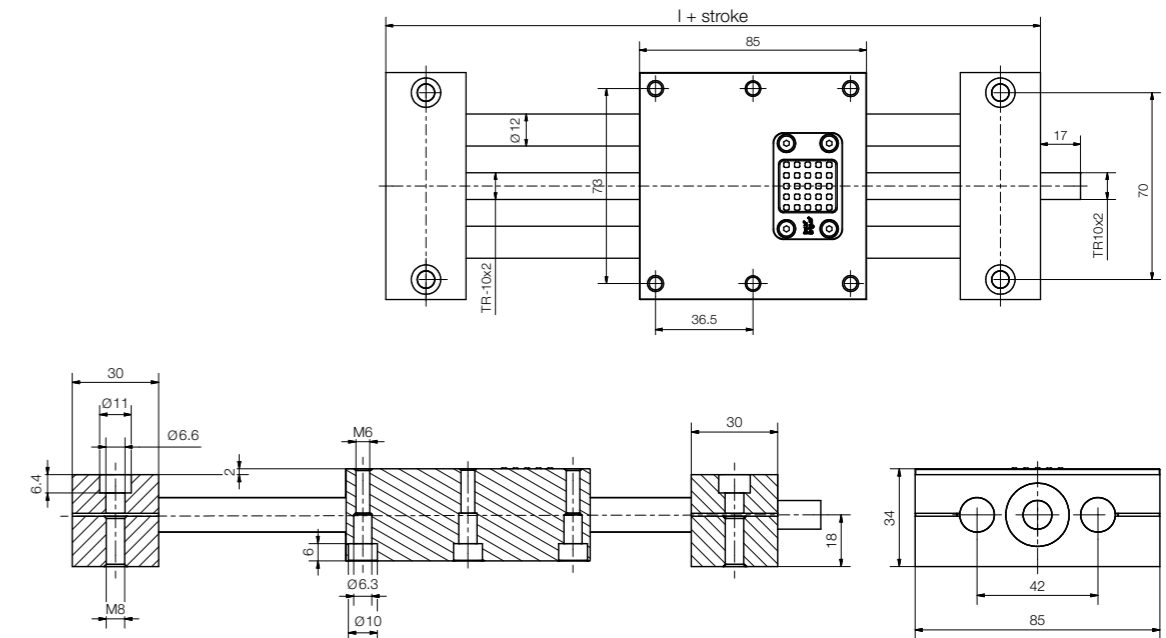
- Fast manual format adjustments
- Aluminium version
- For fast format adjustments
- Including self-locking brake
- Variable stroke length
- Only recommended for horizontal applications
- Max. stat. axial load 200N
(horizontal mounting position)
- Max. dynamic. axial load 50N
- Available accessories
► Page 1503
- Available with motor



Order example

SHT-12-AWM-FF

Standard	Installation size	Shaft material	Fast Forward
----------	-------------------	----------------	--------------



press > disengage > move manually > click into place > fine-tuning