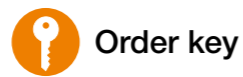


With ball bearing supported lead screw



- Lower drive force
- Optimised clearance
- Up to 1,500rpm (depending on length and load)
- Aluminium drylin® W guide rails, hard-anodised
- Quiet operation – reduced vibration of the overall system
- Ball bearings in both shaft end supports
- Available accessories ► Page 1503
- Lead screw nuts are available separately ► Page 1330
- Available with motor



Order key

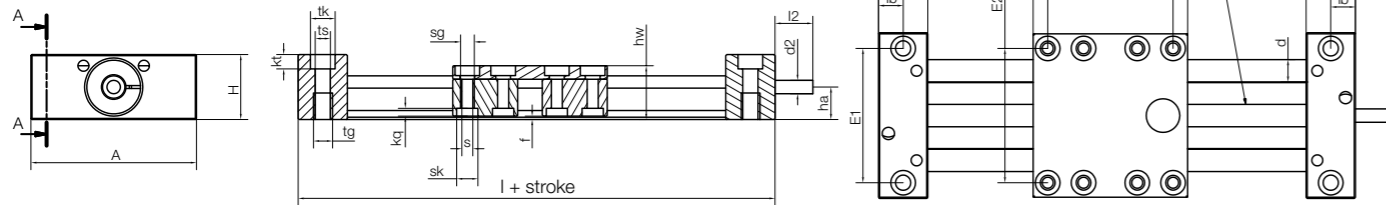


Order example

SLW E -BB-1040



Select versions and accessories online
► www.igus-asean.com/drylinSLW



Technical data and dimensions [mm]

Part No.	Design ⁹⁶⁾	Max. stroke length [mm]	Weight [kg]	Additional (per 100mm) [kg]	Max. static load capacity		Max. speed [1/min]	Max. feed rate [m/min]
					axial [N]	radial [N]		
SLW-BB-0630	■	300	0.25	0.08	100	200	1,000	1.5
SLWE-BB-1040	●	500	0.90	0.10	500	2,000	1,500	3.0
SLWE-BB-1080	●	500	1.10	0.20	500	2,000	1,500	3.0
SLWE-BB-1660	●	750	1.80	0.30	700	2,800	1,500	6.0
SLWE-BB-2080	●	900	3.30	0.40	1,250	5,000	1,500	6.0
SLW-BB-25120	●	1,000	3.30	0.40	1,500	6,000	1,200	6.0

Part No.	A	Al	H	E1	E2	E3	l	hw	f	lt	lb	tk	ts	tg
	-0.3	-0.3		±0.15	±0.15	±0.15								
SLW-BB-0630	54	60	20	40	45	51	112	18	1.2	26	14	11	6.8	M8
SLWE-BB-1040	74	69	29	60	60	56	129	24	1.5	30	19	11	6.8	M8
SLWE-BB-1080	108	100	29	94	94	87	160	24	1.5	30	19	11	6.8	M8
SLWE-BB-1660	104	100	37	84	86	82	170	35	1.5	35	22.5	15	9.0	M10
SLWE-BB-2080	134	150	46	116	116	132	230	44	1.5	40	26	15	8.6	M10
SLW-BB-25120	200	150	60	173	173	128	220	55	2.5	49	17.5	20	13.5	M16

Part No.	kt	sk	sg	kq	s	d	T	l2	d2	d2 ⁹⁵⁾	ha
	±0.1								Standard		
SLW-BB-0630	8.0	7.0	M4	2.0	4.5	6	Tr8x1.5	15	Tr08x1.5	-	9.5
SLWE-BB-1040	6.4	9.5	M6	4.4	6.6	10	Tr10x2	17	Tr10x2	6 h9	14.5
SLWE-BB-1080	6.4	9.5	M6	4.4	6.6	10	Tr10x2	17	Tr10x2	6 h9	14.5
SLWE-BB-1660	8.6	11.0	M8	5.5	9.0	16	Tr14x4	20	Tr14x4	8 h9	18.5
SLWE-BB-2080	8.6	14.0	M8	5.5	9.0	20	Tr18x4	26	12 h9	-	23.0
SLW-BB-25120	12.6	15	M10	5.0	11.0	25	Tr24x5	38	14 h9	-	30.0

⁹⁵⁾ Optional machined lead screw end ⁹⁶⁾ Double rails, square ► Page 986, round ► Page 992

Compact with dryspin® high helix thread



- Pitch 08x15, 10x12, 10x50, 18x100
- High torsional stability
- drylin® W guide rails, hard-anodised aluminium
- BB-version with ball bearing supported lead screw available
- Available accessories ► Page 1503
- Lead screw nuts are available separately ► Page 1330

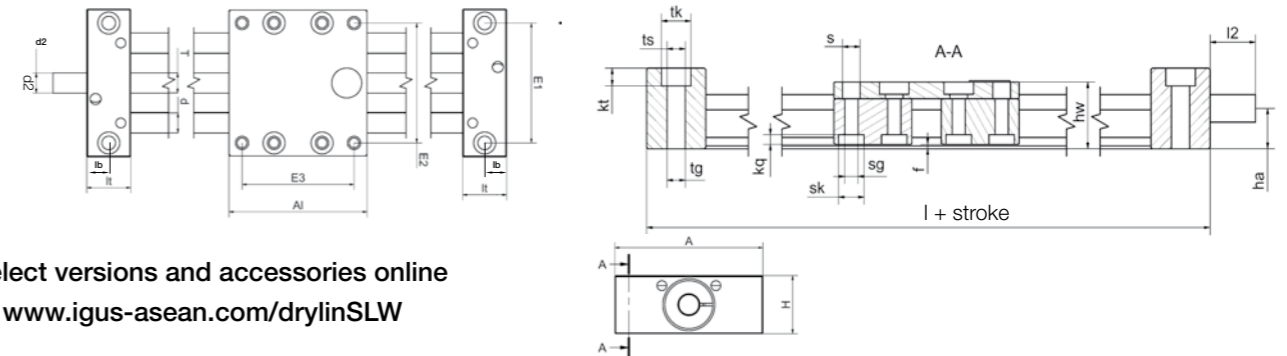
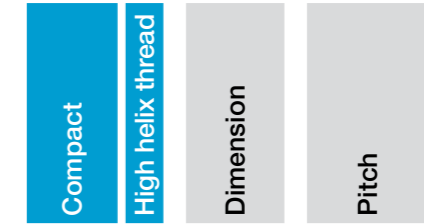


Order key



Order example

SLW S -0630-08x15



Select versions and accessories online
► www.igus-asean.com/drylinSLW

Technical data and dimensions [mm]

Part No.	Design ⁹⁶⁾	Max. stroke length [mm]	Weight [kg]	Additional (per 100mm) [kg]	Max. static load capacity	
					axial [N]	radial [N]
SLWS-0630-08x15	■	300	0.2	0.08	50	200
SLWS-1040-10x12	●	750	0.7	0.10	100	400
SLWS-1040-10x50	●	750	0.7	0.10	100	400
SLWS-1080-10x12	●	750	0.9	0.20	100	400
SLWS-1080-10x50	●	750	0.9	0.20	100	400
SLWS-2080-18x100	●	750	0.9	0.20	400	1,600

Part No.	A	Al	H	E1	E2	E3	l	hw	f	lt	lb	tk	ts	tg
	-0.3	-0.3		±0.15	±0.15	±0.15								
SLWS-0630-08x15	54	60	20	40	45	51	100	17.5	1.2	20	10	11	6.6	-
SLWS-1040-10x12	74	69	29	60	60	56	113	24	1.5	22	11	11	6.8	M8
SLWS-1040-10x50	74	69	29	60	60	56	113	24	1.5	22	11	11	6.8	M8
SLWS-1080-10x12	108	100	29	94	94	87	144	24	1.5	22	11	11	6.8	M8
SLWS-1080-10x50	108	100	29	94	94	87	144	24	1.5	22	11	11	6.8	M8
SLWS-2080-18x100	134	150	46	116	116	132	206	44	1.5	28	14	15	8.6	M10

Part No.	kt	s	sk	sg	kq	d	T	l2	d2	ha
	±0.1									
SLWS-0630-08x15	8.0	4.5	7.0	M4	2.0	6	Ds08x15	15	Ds8x15 ⁹²⁾	9.5
SLWS-1040-10x12	6.4	6.6	9.5	M6	4.4	10	Ds10x12	17	Ds10x12 ⁹²⁾	14.5
SLWS-1040-10x50	6.4	6.6	9.5	M6	4.4	10	Ds10x50	17	Ds10x50 ⁹²⁾	14.5
SLWS-1080-10x12	6.4	6.6	9.5	M6	4.4	10	Ds10x12	17	Ds10x12 ⁹²⁾	14.5
SLWS-1080-10x50	6.4	6.6	9.5	M6	4.4	10	Ds10x50	17	Ds10x50 ⁹²⁾	14.5
SLWS-2080-18x100	12.6	11.0	15	M8	5.0	25	Ds18x100	38	14h9	30.0

⁹²⁾ Lead screw end unmachined ⁹⁶⁾ Double rails, square ► Page 986, round ► Page 992