

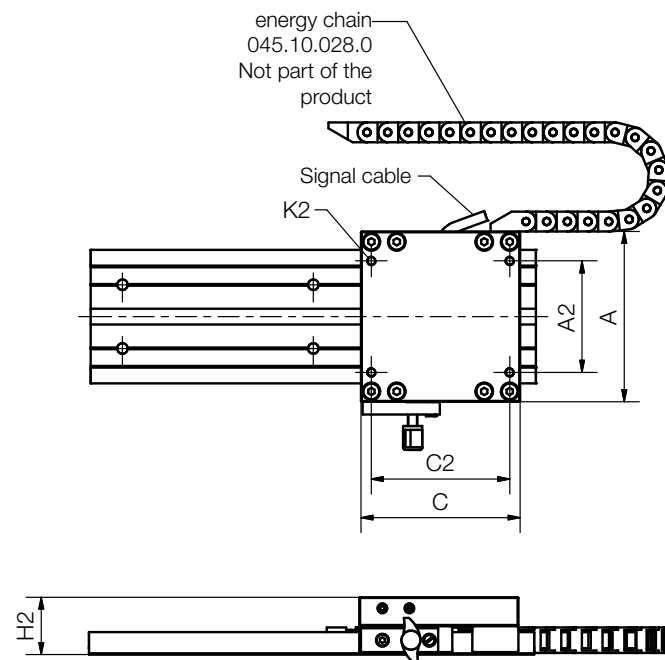


Order key

Type	Size/Design
drylin® W measuring system	WKM EX-10-80-10-2.5-00-01-1000
External data output	
Installation size (shaft Ø)	
Rail width	
Rail length 100mm	
Cable length [m]	
Sensor version	
Number of carriages	
Rail length [mm]	



- At 4 edge triggering (setting parameters of the display or control system, for example. IW4) and +20°C ambient temperature:  
resolution:  $\pm(0.025 + 0.02 \cdot L)$  L = measurement length in metres; repeatability:  $\pm 0.025$ mm
- At 1 edge triggering (setting parameters of the display or control system, for example. IW1) and +20°C ambient temperature:  
resolution:  $\pm(0.1 + 0.02 \cdot L)$  L = measurement length in metres; repeatability:  $\pm 0.025$ mm
- Small sensor with integrated evaluation electronics
- Output signals: Differential mode sustained short circuit-proof with inverted signals (A, Av, B, B/, Z, Z/)
- Technical data ► Page 1191



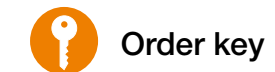
### Dimensions [mm]

Part No.	H2	C	C2	A	A2	K2	Resolution
WKMEX-10-80	36	100	87	107	70	M6	0.1

### Versions

Sensor version	Nominal voltage	Output power	Max. length of signal cable
00	10–30 V	HTL 10–30 V	30m
01	10–30 V	TTL Line Driver	50m
11	5 V	TTL Line Driver	10m

To place an order, please add the sensor type to the part number. Order example: WKMEX-10-80-00

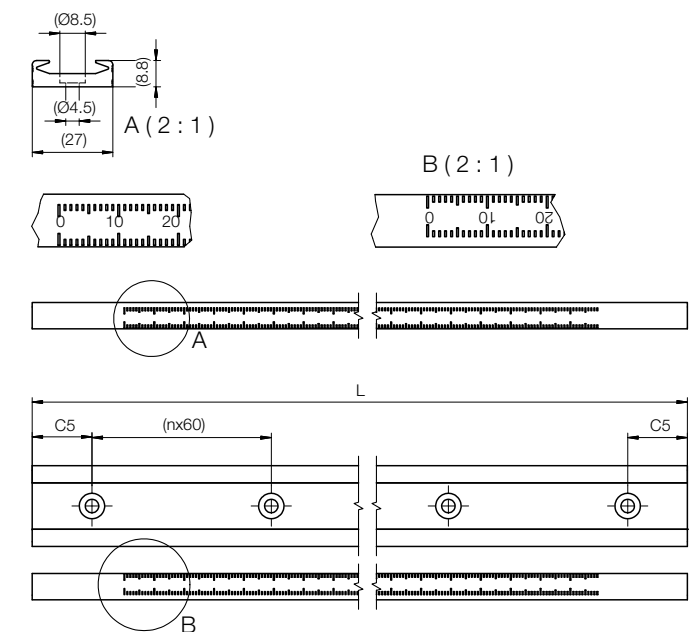


Order key

Type	Size
drylin® pre-load prism slides	NKV - 27 - MES - 1000
Installation size	
Measuring system	
Measuring length	



- econ measuring system based on drylin® pre-load prism slide
- Carriages with individually adjustable pre-load in 4 different strengths
- Including scaling on the rail
- Cost-effective, durable, practical
- Guaranteed holding force from 1.3N to 11.7N
- Due to stop motion pre-loading, the measuring system is suitable for vertical installation without any further clamping



### Dimensions [mm]

Part No.	A	AI	H	E1	E2	E3	I*
	$\pm 0.2$	-0.1	$\pm 0.2$	$\pm 0.15$	$\pm 0.15$	$\pm 0.15$	
NKV-27-MES-1000	27	35/60	22	15	18	30	35/53/60/78
NKV-27-MES-2000	27	35/60	22	15	18	30	35/53/60/78

Part No.	hw	lt	lb	ts	tg	Average displacement force [N]	K1
	$\pm 0.25$	$\pm 0.2$					
NKV-27-MES-1000	22.5	20.5	5.5	3.5	M3	2–15	4.5
NKV-27-MES-2000	22.5	20.5	5.5	3.5	M3	2–15	4.5