

With protected lead screw



- drylin® W profile rail as a protective mechanism
- Available with pitches 10x2, 10x12, 10x25, 10x50
- Low profile design
- Available with motor

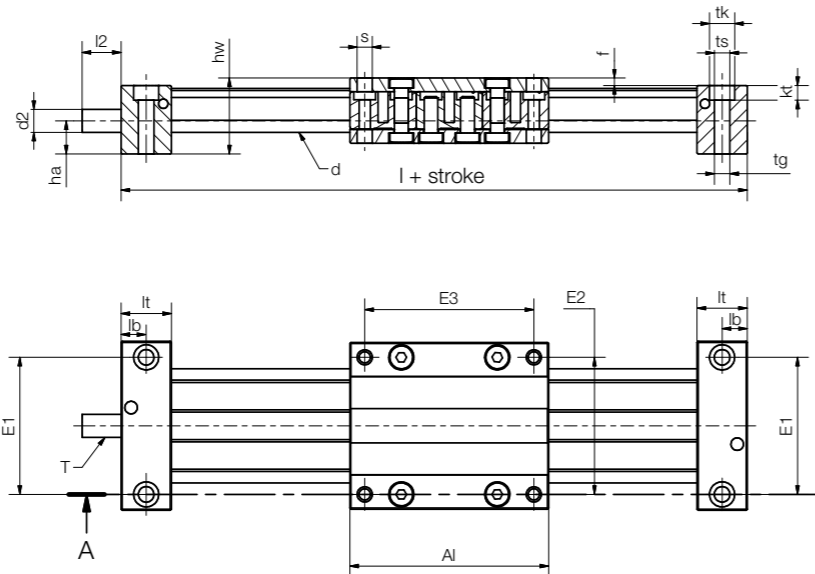
Order key

Order example

SLW-BB-PT-1040



Select versions and accessories online
▶ www.igus-asean.com/drylinSLW



Technical data

Part No.	Max. stroke length [mm]	Weight [kg]	Additional (per 100mm) [kg]	Max. static load capacity		Shaft end support material
				axial [N]	radial ⁹⁷⁾ [N]	
SLW-PT-1040	750	0.75	0.20	700	2,000	Aluminium
SLW-BB-PT-1040	750	1.10	0.20	500	2,000	Aluminium

Dimensions [mm]

Part No.	A	Al	H	E1/E2	E3	I	hw	f	lt	lb	tk	ts	tg
	-0.3	-0.3		±0.15	±0.15								
SLW-PT-1040	74	87	29	60	74	131	33.25	3.25	22	11	11	6.8	M8
SLW-BB-PT-1040	74	87	29	60	74	147	33.25	3.25	30	19	11	6.8	M8

Part No.	kt ±0.1	d	T	l2	d2	d2 ⁹⁸⁾	ha
SLW-PT-1040	6.4	10	Tr10x2	17	Tr10x2	6 h9	14.50
SLW-BB-PT-1040	6.4	10	Tr10x2	17	Tr10x2	6 h9	14.50

⁹⁷⁾ Depends on load and rotation speed ⁹⁸⁾ Thread/remaining thread visible

Dual action linear system



- Carriages can be controlled separately
- Different lead screw pitches can be applied
- Separate manual adjustment of carriages
- Design flexibility
- Clearance adjustment (optional)

Order key

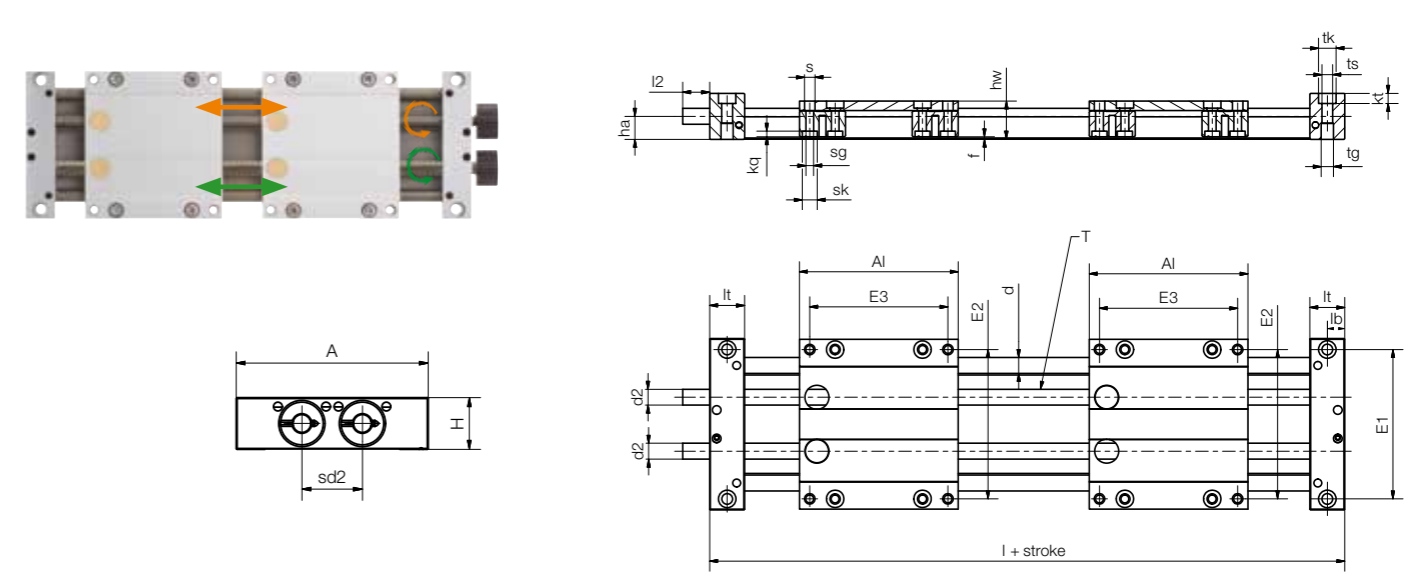
Order example

SLW T -1080



Options:
BB Ball bearings

Select versions and accessories online
▶ www.igus-asean.com/drylinSLW



Technical data

Part No.	Max. stroke length [mm]	Weight [kg]	Additional (per 100mm) [kg]	Max. static load capacity		Shaft end support material
				axial [N]	radial [N]	
SLWT-1080	750	1.6	0.25	700	2,800	Aluminium
SLWT-BB-1080 New	750	1.6	0.25	700	2,800	Aluminium

Dimensions [mm]

Part No.	A	Al	H	E1	E2	E3	I	hw	f	lt	tk	ts	tg	lb
	-0.3	-0.3		±0.15	±0.15	±0.15			±0.1					±0.1
SLWT-1080	108	100	29	94	94	87	244	24	1.5	22	11	6.8	M8	11
SLWT-BB-1080 New	108	100	29	94	94	87	244	24	1.5	30	11	6.8	M8	19

Part No.	kt	sk	s	sg	kq	d	T	l2	d2	d2	ha	sd2
SLWT-1080	6.4	9.5	6.6	M6	4.4	10	Tr10x2 ⁹²⁾	17	Tr10x2	6 h9	14.50	34
SLWT-BB-1080 New	6.4	9.5	6.6	M6	4.4	10	Tr10x2 ⁹²⁾	17	Tr10x2	6 h9	14.50	34

⁹²⁾ Lead screw end unmachined