

Made of stainless steel



- Stainless steel version with corrosion-resistant steel components (AISI 303, AISI 316 and AISI 316Ti)
- Choice of bearing material:
iglidur® J = Standard
iglidur® A180 = FDA-compliant
iglidur® X = High temperature up to +150°C¹¹⁷⁾
- Available accessories
▶ Page 1503

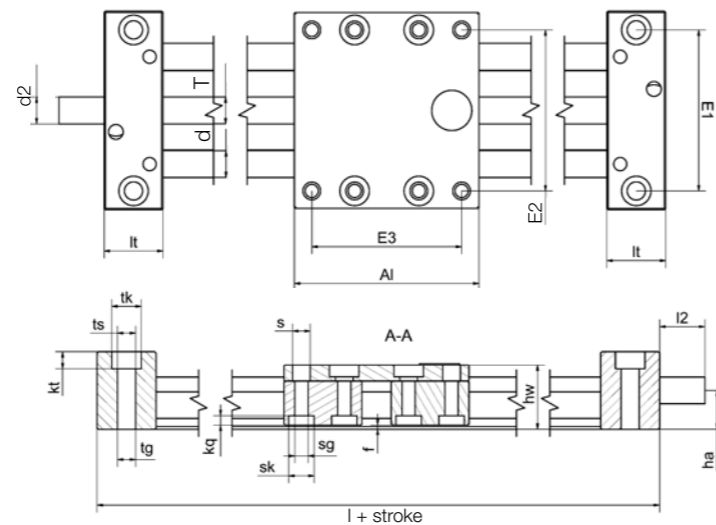


Order key

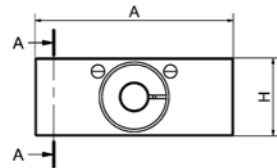
Order example

SLW-ES J-1040

Compact	Stainless steel	Bearing material	Dimension
---------	-----------------	------------------	-----------



Select versions and accessories online
▶ www.igus-asean.com/drylinSLW



Technical data

Part No.	Shafts Ø [mm]	Max. stroke length [mm]	Weight [kg]	Additional (per 100mm) [kg]	Max. stat. load capacity	
					axial [N]	radial [N]
SLW-ESJ-1040	10	750	1.4	0.2	700	2,800
SLW-ESX-1040	10	750	1.4	0.2	700	2,800
SLW-ESA180-1040	10	750	1.4	0.2	700	2,800
SLW-ESJ-2080	20	1,000	5.7	0.64	1,600	6,400
SLW-ESA180-2080	20	1,000	5.7	0.64	1,600	6,400

Dimensions [mm]

Part No.	A	Al	H	E1	E2	E3	l	hw	f	lt	lb	tk	ts	tg
	-0.3	-0.3		±0.15	±0.15	±0.15								
SLW-ES-1040	74	100	29	60	60	87	144	24	1.5	22	11	11	6.8	M8
SLW-ES-2080	134	150	46	116	116	132	206	44	1.5	28	14	15	8.6	M10

Part No.	kt	s	sk	sg	kq	d	T	l2	d2	ha
	±0.1								Standard	
SLW-ES-1040	6.4	6.6	9.5	M6	4.4	10	Tr10x2	17	Tr10x2 ⁹²⁾	14.5
SLW-ES-2080	8.6	9.0	14	M8	5.5	20	Tr18x4	26	12h9	23.0

⁹²⁾ Lead screw end unmachined

¹¹⁷⁾ In the event of severe temperature fluctuations during transport, storage and use, thermal expansion effects cannot be ruled out

