

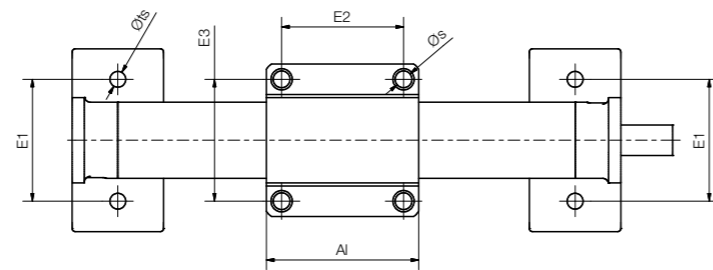
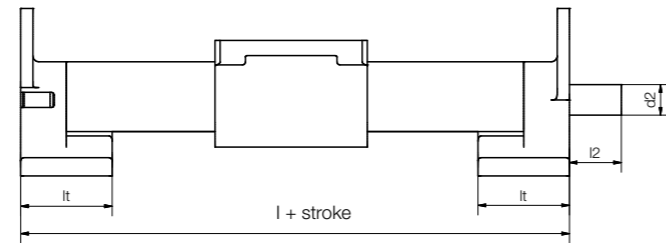
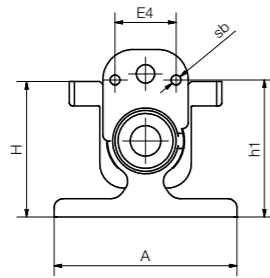


Order key

Order example

SETC-25-AWM

easytube	Dimension	Shaft material
----------	-----------	----------------



- Lightweight
- Cost-effective
- Simplified assembly
- Light, clean and quiet

Technical data

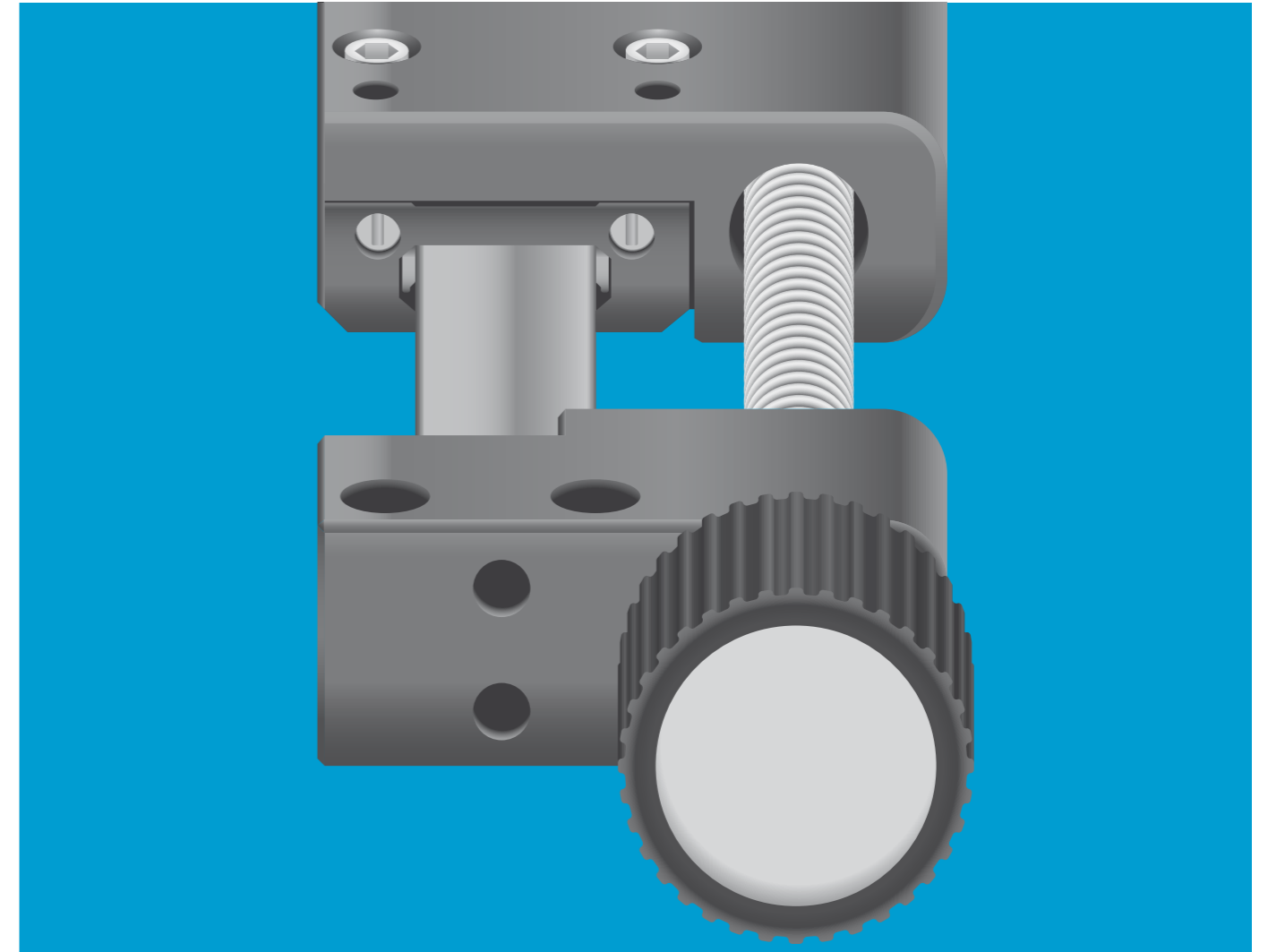
Part No.	Weight [kg]	Max. stroke length [mm]	Max. static load capacity	
			axial [N]	radial [N]
SETC-25-AWM	0.15	750	150	300

Dimensions [mm]

Part No.	A	Al	H	E1	E2	E3	E4	l	h1	lt	ts	s	sb	l2	d2 <sup>92)</sup>
SETC-25-AWM	60	55	44	40	40	40	20	115	45	30	5.2	5.2	M4	17	Tr10x2

<sup>92)</sup> Lead screw end unmachined

More dimensions upon request



## drylin® general drive technology – SLT linear modules

Based on lubrication-free  
drylin® T miniature guide

Drive: Trapezoidal or high helix lead screw

Flat and compact design

Carriages with individually adjustable clearance

Variable lead screw options

