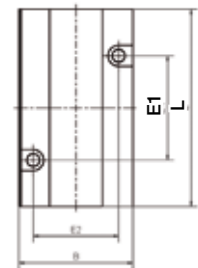
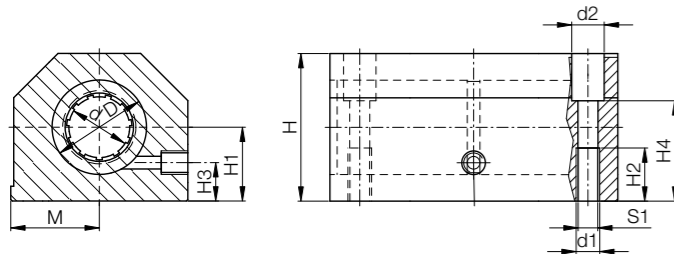




● Housing: Aluminium, equipped with two drylin® R linear plain bearings to increase the guide length



Dimensions [mm]

d	D	H	H1	H2	H3	H4	S1	B	L	M	E1	E2	d1	d2	Part No.	Self-aligning	Solid plastic bearings
	H6		+0.01						+0.3	±0.02	±0.15	±0.15					
			-0.02												Standard with RJUM-01	with RJUM-03	with RJM-01
8	16	28	13	13	8	23	M5	35	62	17.5	35	25	4.20	8	RTA-01-08	-	RTA-04-08
12	22	35	18	13	10	25	M6	43	76	21.5	40	30	5.20	10	RTA-01-12	RTA-03-12	RTA-04-12
16	26	42	22	13	12	30	M6	53	84	26.5	45	36	5.20	10	RTA-01-16	RTA-03-16	RTA-04-16
20	32	50	25	18	13	34	M8	60	104	30.0	55	45	6.80	11	RTA-01-20	RTA-03-20	RTA-04-20
25	40	60	30	22	15	40	M10	78	130	39.0	70	54	8.60	15	RTA-01-25	RTA-03-25	RTA-04-25
30	47	70	35	26	16	48	M12	87	152	43.5	85	62	10.30	18	RTA-01-30	RTA-03-30	RTA-04-30
40	62	90	45	34	20	60	M16	108	176	54.0	100	80	14.25	20	RTA-01-40	RTA-03-40	RTA-04-40

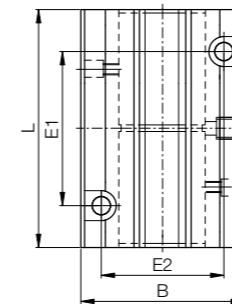
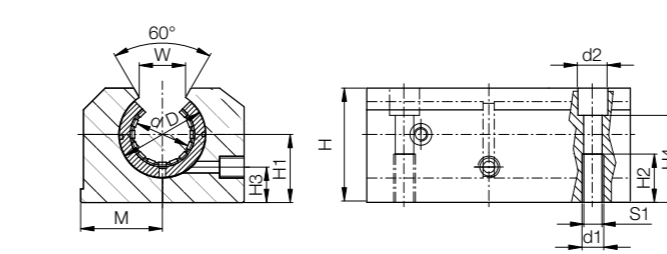
Are equipped with:



Available with drylin® liners (optional: J200/A180):



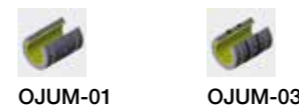
● Housing: Aluminium, equipped with two drylin® R linear plain bearings to increase the guide length



Dimensions [mm]

d	D	H	H1	H2	H3	H4	S1	B	L	M	E1	E2	d1	d2	W	Part No.	Self-aligning
	H6		+0.01						+0.3	±0.02	±0.15	±0.15					
			-0.02													Standard with OJUM-01	with OJUM-03
12	22	30	18	13	10	25	M6	43	76	21.5	40	30	5.20	10	14	OTA-01-12	OTA-03-12
16	26	35	22	13	12	30	M6	53	84	26.5	45	36	5.20	10	17	OTA-01-16	OTA-03-16
20	32	42	25	18	13	34	M8	60	104	30.0	55	45	6.80	11	17	OTA-01-20	OTA-03-20
25	40	51	30	22	15	40	M10	78	130	39.0	70	54	8.60	15	21	OTA-01-25	OTA-03-25
30	47	60	35	26	16	48	M12	87	152	43.5	85	62	10.30	18	21	OTA-01-30	OTA-03-30
40	62	77	45	34	20	60	M16	108	176	54.0	100	80	14.25	20	27	OTA-01-40	OTA-03-40

Are equipped with:



Available with drylin® liners (optional: J200/A180):



Order key

Type	Option	Size
Tandem housing with RJUM bearings	Aluminium housing	Standard with RJUM-01
		Inner Ø

Options:

- 01: Standard with RJUM-01
- 03: with RJUM-03
- 04: with RJM-01

i Please note:
Installation instructions
► Page 1079

Order key

Type	Option	Size
Tandem housing with OJUM bearings	Aluminium housing	Standard with OJUM-01
		Inner Ø

Options:

- 01: Standard with OJUM-01
- 03: with OJUM-03

i Please note:
Installation instructions
► Page 1079