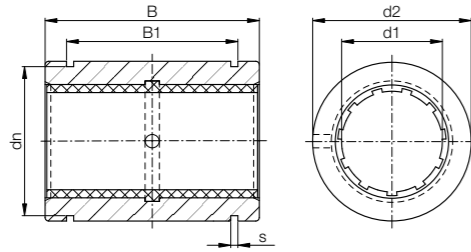


## drylin® R linear plain bearings | Product range

Closed stainless steel adapter made of stainless steel 303



Order key

| Type                    | Size       | Material        |
|-------------------------|------------|-----------------|
| <b>R J U M-01-12-ES</b> |            |                 |
| Closed                  | iglidur® J | Stainless steel |
| Liner                   | Metric     |                 |
| Standard                | Inner Ø d1 |                 |

● Secured by circlips

<sup>78)</sup> According to igus® testing method ► Page 1146<sup>82)</sup> Design tips ► Page 1078

Please note: Installation instructions ► Page 1079

## Dimensions [mm]

| d1 | d2 | B   | B1   | s    | dn   | Part No.      |
|----|----|-----|------|------|------|---------------|
|    | H7 | h10 | H10  | H10  | h10  |               |
| 12 | 22 | 32  | 22.6 | 1.30 | 20.5 | RJUM-01-12-ES |
| 16 | 26 | 36  | 24.6 | 1.30 | 24.2 | RJUM-01-16-ES |
| 20 | 32 | 45  | 31.2 | 1.60 | 29.6 | RJUM-01-20-ES |
| 25 | 40 | 58  | 43.7 | 1.85 | 36.5 | RJUM-01-25-ES |
| 30 | 47 | 68  | 51.7 | 1.85 | 43.5 | RJUM-01-30-ES |

## Technical data

| Part No.      | d1 tolerance <sup>78)</sup><br>[mm] | Fmax. dynamic <sup>82)</sup> | Fmax. static <sup>82)</sup> | Weight<br>[g] |
|---------------|-------------------------------------|------------------------------|-----------------------------|---------------|
|               |                                     | p = 5MPa<br>[N]              | p = 35MPa<br>[N]            |               |
| RJUM-01-12-ES | +0.030 +0.088                       | 960                          | 6,720                       | 60            |
| RJUM-01-16-ES | +0.030 +0.088                       | 1,440                        | 10,080                      | 84            |
| RJUM-01-20-ES | +0.030 +0.091                       | 2,250                        | 15,750                      | 147           |
| RJUM-01-25-ES | +0.030 +0.091                       | 3,625                        | 25,375                      | 324           |
| RJUM-01-30-ES | +0.040 +0.110                       | 5,100                        | 35,700                      | 486           |

Available with drylin® liners (optional: J200/A180):



J



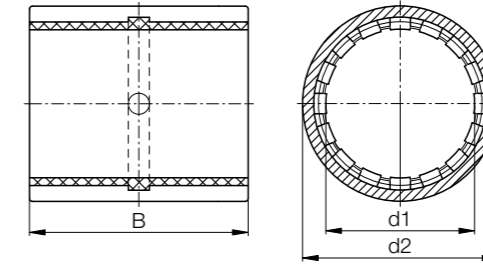
E7



X

## drylin® R linear plain bearings | Product range

Closed, anodised aluminium adapter, short design



Order key

| Type                 | Size       |
|----------------------|------------|
| <b>R J U M-02-10</b> |            |
| Closed               | iglidur® J |
| Liner                | Metric     |
| Compact              | Inner Ø d1 |

● Also available as a reduced clearance version

RJUM-12 (Ø 10–50mm)

<sup>78)</sup> According to igus® testing method ► Page 1146<sup>81)</sup> Ø < 10mm use press-fitted sleeve bearings<sup>82)</sup> Design tips ► Page 1078

Please note: Installation instructions ► Page 1079

## Dimensions [mm]

| d1 | d2 | B   | Part No.                  |
|----|----|-----|---------------------------|
|    | H7 | h10 |                           |
| 6  | 12 | 22  | RJZM-02-06 <sup>81)</sup> |
| 8  | 15 | 24  | RJZM-02-08 <sup>81)</sup> |
| 10 | 17 | 26  | RJUM-02-10                |
| 12 | 19 | 28  | RJUM-02-12                |
| 16 | 24 | 30  | RJUM-02-16                |
| 20 | 28 | 30  | RJUM-02-20                |
| 25 | 35 | 40  | RJUM-02-25                |
| 30 | 40 | 50  | RJUM-02-30                |
| 40 | 52 | 60  | RJUM-02-40                |
| 50 | 62 | 70  | RJUM-02-50                |

## Technical data

| Part No.                  | Housing hole<br>Ø H7 [mm] | d1 tolerance <sup>78)</sup><br>[mm] | Fmax. dynamic <sup>82)</sup> | Fmax. static <sup>82)</sup> | Weight<br>[g] |
|---------------------------|---------------------------|-------------------------------------|------------------------------|-----------------------------|---------------|
|                           |                           |                                     | p = 5MPa<br>[N]              | p = 35MPa<br>[N]            |               |
| RJZM-02-06 <sup>81)</sup> | 12                        | +0.032 +0.070                       | 600                          | 4,200                       | 4             |
| RJZM-02-08 <sup>81)</sup> | 15                        | +0.032 +0.070                       | 650                          | 4,550                       | 6             |
| RJUM-02-10                | 17                        | +0.030 +0.088                       | 650                          | 4,550                       | 8             |
| RJUM-02-12                | 19                        | +0.030 +0.088                       | 840                          | 5,880                       | 10            |
| RJUM-02-16                | 24                        | +0.030 +0.088                       | 1,200                        | 8,400                       | 17            |
| RJUM-02-20                | 28                        | +0.030 +0.091                       | 1,500                        | 10,500                      | 18            |
| RJUM-02-25                | 35                        | +0.030 +0.091                       | 2,500                        | 17,500                      | 42            |
| RJUM-02-30                | 40                        | +0.040 +0.110                       | 3,750                        | 26,250                      | 56            |
| RJUM-02-40                | 52                        | +0.040 +0.115                       | 6,000                        | 42,000                      | 113           |
| RJUM-02-50                | 62                        | +0.050 +0.130                       | 8,750                        | 61,250                      | 147           |