

Order key

Type	Option	Size
RQA-01-10		
Quad block with RJUM bearings	Aluminium housing	Standard with RJUM-01
		Inner Ø d1

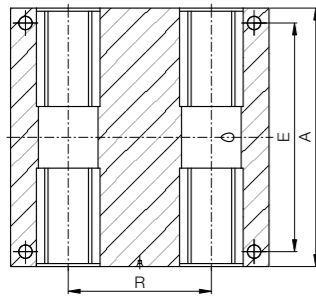
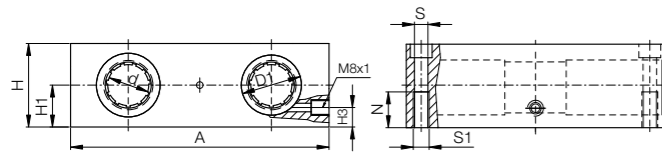
Options:

- 01: Standard with RJUM-01
- 03: with RJUM-03
- 04: with RJM-01

Please note:
Installation instructions
▶ Page 1079



● Housing: Aluminium, equipped with four drylin® R linear plain bearings



Dimensions [mm]

d	D1	A	H	H1	H3	R	N	E	S	S1	Part No. Standard with RJUM-01	Self-aligning with RJUM-03	Solid plastic bearings with RJM-01
8	16	65	23	11.5	8	32	11	55	4.3	M5	RQA-01-08	-	RQA-04-08
10	19	70	25	12.5	10	34	13	60	4.3	M5	RQA-01-10	RQA-03-10	RQA-04-10
12	22	85	32	16	13	42	13	73	5.3	M6	RQA-01-12	RQA-03-12	RQA-04-12
16	26	100	36	18	15	54	13	88	5.3	M6	RQA-01-16	RQA-03-16	RQA-04-16
20	32	130	46	23	19	72	18	115	6.6	M8	RQA-01-20	RQA-03-20	RQA-04-20
25	40	160	56	28	24	88	22	140	8.4	M10	RQA-01-25	RQA-03-25	RQA-04-25
30	47	180	64	32	27	96	26	158	10.5	M12	RQA-01-30	RQA-03-30	RQA-04-30
40	62	230	80	40	35	122	34	202	13.5	M16	RQA-01-40	RQA-03-40	RQA-04-40

Are equipped with:



Available with drylin® liners (optional: J200/A180):



Order key

Type	Option	Size
OQA-01-12		
Quad block with OJUM bearings	Aluminium housing	Standard with OJUM-01
		Inner Ø d1

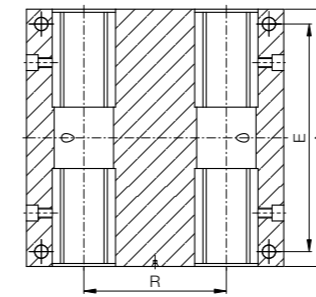
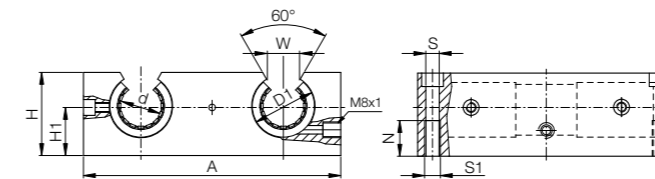
Options:

- 01: Standard with OJUM-01
- 03: with OJUM-03

Please note:
Installation instructions
▶ Page 1079



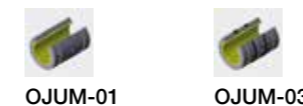
● Housing: Aluminium, equipped with four drylin® R linear plain bearings



Dimensions [mm]

d	D1	A	H	H1	W	R	N	E	S	S1	Part No. Standard with OJUM-01	Self-aligning with OJUM-03
12	22	85	30	18	14	42	13	73	5.3	M6	OQA-01-12	OQA-03-12
16	26	100	35	22	17	54	13	88	5.3	M6	OQA-01-16	OQA-03-16
20	32	130	42	25	17	72	18	115	6.8	M8	OQA-01-20	OQA-03-20
25	40	160	51	30	21	88	22	140	9.0	M10	OQA-01-25	OQA-03-25
30	47	180	60	35	21	96	26	158	10.5	M12	OQA-01-30	OQA-03-30
40	62	230	77	45	27	122	34	202	13.5	M16	OQA-01-40	OQA-03-40

Are equipped with:



Available with drylin® liners (optional: J200/A180):

