



Part No. Thread Options

**SLS - 10X2 - BB**

Lead screw support block

Diameter

Pitch

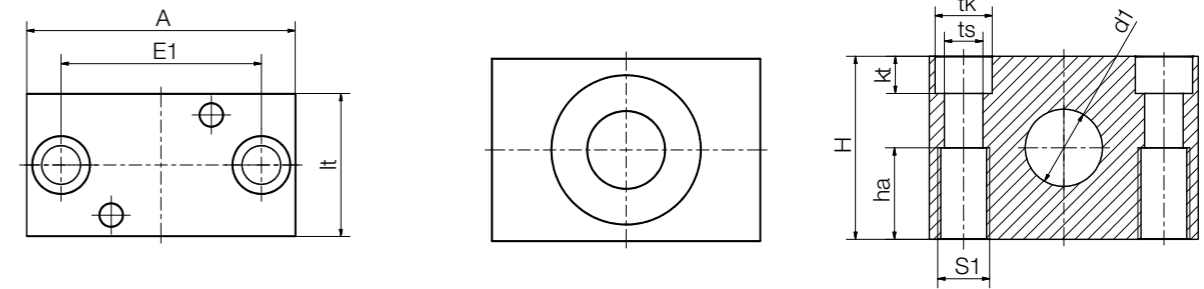
Ball bearing

Options:  
**BB:** Ball bearings  
**FL:** Fixed bearing  
**LL:** Floating bearing

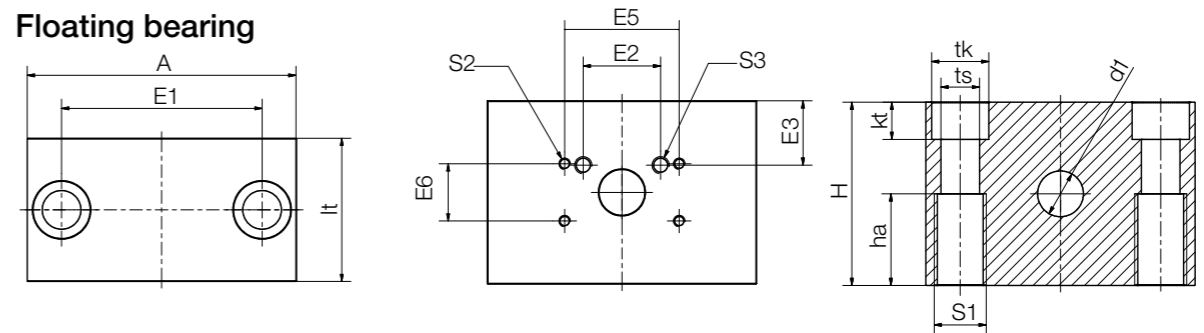


► Page 1447

### Fixed bearing



### Floating bearing



### Technical data and dimensions, ball bearing [mm]

Part No.	Weight [g]	Max. stat. load capacity axial [N]	S1	S2
SLS-S6-BB	New 110	150	M8	M4
SLS-S6.35-BB	New 110	150	M8	M4
SLS-S8-BB	New 110	350	M8	M4
SLS-S10-BB	New 110	350	M8	M4
SLS-S12-BB	New 265	1,000	M12	M4
SLS-S14-BB	New 265	1,000	M12	M4
SLS-S16-BB	New 265	1,000	M12	M4
SLS-S18-BB	New 265	1,000	M12	M4
SLS-S20-BB	New 350	1,500	M16	M4
SLS-10X2-BB	110	350	M8	M4
SLS-10X3-BB	New 110	350	M8	M4
SLS-10X12-BB	110	350	M8	M4
SLS-10X50-BB	110	350	M8	M4
SLS-12X3-BB	New 265	1,000	M12	M4
SLS-14X4-BB	New 265	1,000	M12	M4
SLS-16X2-BB	New 265	1,000	M12	M4
SLS-16X4-BB	New 265	1,000	M12	M4
SLS-18X4-BB	New 265	1,000	M12	M4
SLS-18X8P4-BB	265	1,000	M10	M4
SLS-18X24-BB <sup>55)</sup>	265	1,000	M10	M4
SLS-18X100-BB <sup>55)</sup>	265	1,000	M10	M4
SLS-20X4-BB	New 350	1,500	M16	M4
SLS-24X5-BB	350	1,500	M16	M4

<sup>55)</sup> Lead screw end must be turned to 18mm

### Dimensions, ball bearing [mm]

A	H	E1	E5	E6	lt	kt	tk	ts	d1	ha
50	32	36	40	20	30	6.5	11	6.6	6	16
50	32	36	40	20	30	6.5	11	6.6	6.35	16
50	32	36	40	20	30	6.5	11	6.6	8	16
50	32	36	40	20	30	6.5	11	6.6	10	16
72	46	54	48	36	36	8.6	15	9.0	12	23
72	46	54	48	36	36	8.6	15	9.0	14	23
72	46	54	48	36	36	8.6	15	9.0	16	23
72	46	54	48	36	36	8.6	15	9.0	18	23
94	64	70	48	36	50	13.0	20	13.5	20	32
50	32	36	40	20	30	6.5	11	6.6	10	16
50	32	36	40	20	30	6.5	11	6.6	10	16
50	32	36	40	20	30	6.5	11	6.6	10	16
50	32	36	40	20	30	6.5	11	6.6	10	16
72	46	54	48	36	36	8.6	15	9.0	12	23
72	46	54	48	36	36	8.6	15	9.0	14	23
72	46	54	48	36	36	8.6	15	9.0	16	23
72	46	54	48	36	36	8.6	15	9.0	16	23
72	46	54	48	36	36	8.6	15	9.0	18	23
72	46	54	48	36	36	8.6	15	9.0	18	23
72	46	54	48	36	36	8.6	15	9.0	18	23
72	46	54	48	36	36	8.6	15	9.0	18	23
94	64	70	48	36	50	13.0	20	13.5	20	32
94	64	70	48	36	50	13.0	20	13.5	24	32