



Order key

Part No.	Thread	Options
SLS - 10X2 - FL - LH		
Lead screw support block	Diameter	Pitch
	Fixed bearing	Option left-hand thread

Options:

- FL: Fixed bearing
- LL: Floating bearing
- LH: Left-hand thread option only for Tr10x2, Tr10x3, Tr18x4, Tr24x5



Scope of delivery: Anodised lead screw support block

- FL: Fixed bearing with anodised clamping ring with RH thread (standard) and maintenance-free iglidur® plain bearing⁵²⁾
- LL: Floating bearing with maintenance-free iglidur® plain bearing

Technical data and dimensions [mm] – (for both right and left-hand threads)

Part No.	Weight [g]	Max. static load capacity axial [N]	S1	S2	S3
SLS-10X2-FL (LH)	88	700	M8	-	-
SLS-10X2-LL	115	-	M8	M4	M6
SLS-10X3-FL (LH)	88	700	M8	-	-
SLS-10X3-LL	115	-	M8	M4	M6
SLS-10X12-FL	88	700 ⁵³⁾	M8	-	-
SLS-10X12-LL	115	-	M8	M4	M6
SLS-10X50-FL	88	700 ⁵³⁾	M8	-	-
SLS-10X50-LL	115	-	M8	M4	M6
SLS-12X3-FL New	205	1,600	M12	-	-
SLS-12X3-LL New	295	-	M12	M4	M6
SLS-14X3-FL New	205	1,600	M12	-	-
SLS-14X3-LL New	295	-	M12	M4	M6
SLS-14X4-FL New	205	1,600	M12	-	-
SLS-14X4-LL New	295	-	M12	M4	M6
SLS-16X2-FL New	205	1,600	M12	-	-
SLS-16X2-LL New	295	-	M12	M4	M6
SLS-16X4-FL New	205	1,600	M12	-	-
SLS-16X4-LL New	295	-	M12	M4	M6

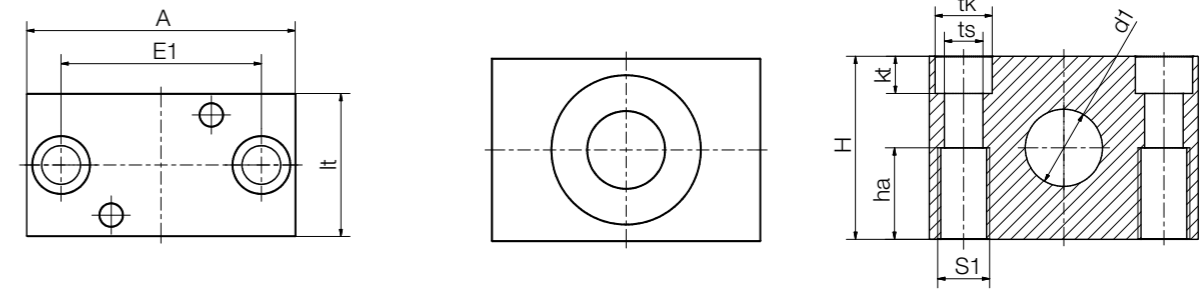
⁵²⁾ FL lead screw support block with trapezoidal thread TR10x2, TR10x3, TR18x4, TR24x5 lead screw also available with clamping rings with left-hand thread

⁵³⁾ Can exceed max. stat. load of the nut

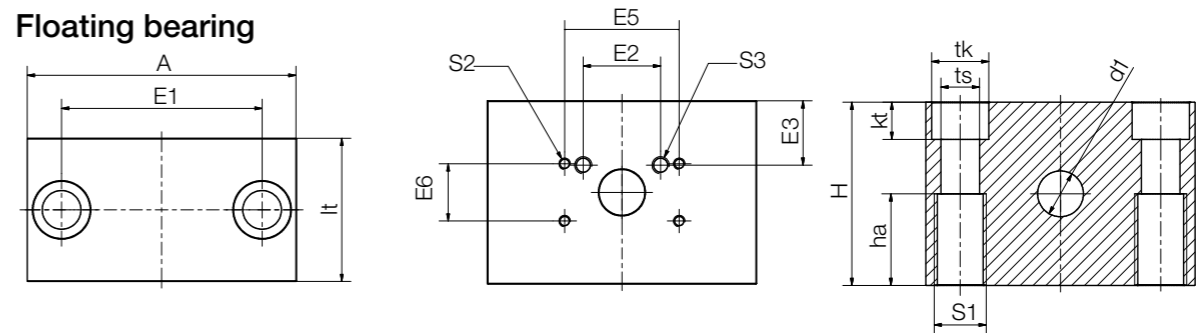
⁵⁴⁾ Lead screw end must be turned to d1 value

⁵⁵⁾ Lead screw end must be turned to 18mm

Fixed bearing



Floating bearing



► Page 1447

Dimensions [mm] – (for both right and left-hand threads)

A	H	E1	E2	E3	E5	E6	lt	kt	tk	ts	d1	ha
50	32	36	-	-	-	-	30	6.5	11	6.6	10	16
50	32	36	27	6.5	40	20	30	6.5	11	6.6	10	16
50	32	36	-	-	-	-	30	6.5	11	6.6	10	16
50	32	36	27	6.5	40	20	30	6.5	11	6.6	10	16
50	32	36	-	-	-	-	30	6.5	11	6.6	10	16
50	32	36	27	6.5	40	20	30	6.5	11	6.6	10	16
50	32	36	-	-	-	-	30	6.5	11	6.6	10	16
50	32	36	27	6.5	40	20	30	6.5	11	6.6	10	16
72	46	54	-	-	-	-	36	8.6	15	9	12	23
72	46	54	27	13.5	40	20	36	8.6	15	9	12	23
72	46	54	-	-	-	-	36	8.6	15	9	14	23
72	46	54	27	13.5	40	20	36	8.6	15	9	14	23
72	46	54	-	-	-	-	36	8.6	15	9	14	23
72	46	54	27	13.5	40	20	36	8.6	15	9	14	23
72	46	54	-	-	-	-	36	8.6	15	9	16	23
72	46	54	27	13.5	40	20	36	8.6	15	9	12	23
72	46	54	-	-	-	-	36	8.6	15	9	16	23
72	46	54	27	13.5	40	20	36	8.6	15	9	12	23