



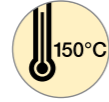
iglidur® J



iglidur® W300



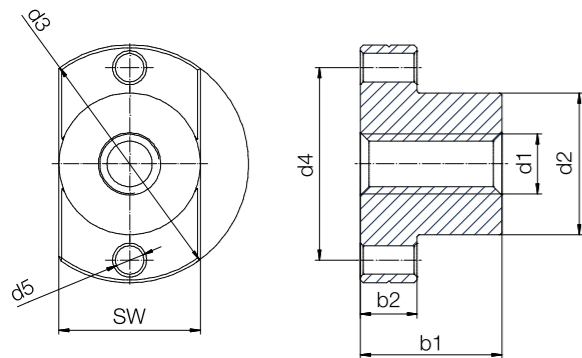
iglidur® J350



iglidur® R



iglidur® A180



Technical data

Thread	Hand of rotation		Effective support surface [mm²]	Max. stat. axial F [N]				
	right	left		iglidur®				
single start				J	W300	J350	R	A180
Tr8x1.5	●	●	228	911	1,139	683	456	797
Tr10x2	●	●	353	1,414	1,767	1,060	707	1,237
Tr12x3	●	●	577	2,309	2,886	1,732	1,155	2,020
Tr14x4	●	●	660	2,639	3,299	1,979	1,319	2,309
Tr16x4	●	●	770	3,079	3,848	2,309	1,539	2,694
Tr18x4	●	●	880	3,519	4,398	2,639	1,759	3,079
Multi start								
Tr06x2P1	●	–	118	175 ⁴³⁾	175 ⁴³⁾	175 ⁴³⁾	175 ⁴³⁾	175 ⁴³⁾
Metric								
M5	●	–	56	75 ⁴³⁾	75 ⁴³⁾	75 ⁴³⁾	75 ⁴³⁾	75 ⁴³⁾
M8	●	–	278	911	1,139	683	456	797
M10	●	–	437	1,414	1,767	1,040	1,155	1,237

⁴³⁾ Reduced load due to nut geometry

Order key

Type	SW	d2	b1	Thread
------	----	----	----	--------

□ F R M-131313TR6X2P1

iglidur® material	Form F	Hand of rotation	Metric	Width across flats	Outer Ø [mm]	Length [mm]	Trapezoidal thread	Diameter [mm]	Pitch
-------------------	--------	------------------	--------	--------------------	--------------	-------------	--------------------	---------------	-------

Options:
Hand of rotation
R: Right-hand thread
L: Left-hand thread

- J** High efficiency at all speeds
- W(300)** Extremely strong and wear-resistant
- J350** For temperatures up to +150°C
- R** The cost-effective option for high volume
- A180** FDA-compliant for the food and pharmaceutical industries

Dimensions [mm]

d1 ¹⁵⁶⁾	d2 ¹⁵⁶⁾	d3	d4	d5	b1 ¹⁵⁶⁾	b2	SW	Weight [g]					Part No.
								iglidur®					
								J	W300	J350	R	A180	
8	20	36	28	4	20	8	20	12.7	10.6	–	–	12.4	□F□M-202020TR8X1.5
10	25	42	34	5	25	10	25	23.7	19.7	12.28	22.10	23.2	□F□M-252525TR10X2
12	28	48	38	6	35	12	28	39.2	32.7	37.92	36.60	38.4	□F□M-282835TR12X3
14	28	48	38	6	35	12	28	37.1	30.9	35.86	34.61	36.4	□F□M-282835TR14X4
16	28	48	38	6	35	12	28	34.6	28.8	33.48	32.32	33.9	□F□M-282835TR16X4
18	28	48	38	6	35	12	28	31.9	26.5	30.79	29.72	31.2	□F□M-282835TR18X4
6	13	25	19	3.2	15	5	13	3.8	3.1	3.5	–	3.7	□FRM-131315TR06X2P1
5	9	18	15.2	3.2	13	3	9	1.3	1.1	1.2	–	1.3	□FRM-090913M5
8	20	36	28	4	20	8	20	12.7	10.57	12.28	11.85	12.45	□FRM-202020M8
10	25	42	34	5	25	10	25	23.7	19.70	22.90	22.10	23.20	□FRM-252525M10

¹⁵⁶⁾ Tolerances according to DIN ISO 2768-1, tolerance class m (medium)