

Technical data

Thread	Max. stat. axial F [N]	Max. idling torque (with O-ring) from [Nm]	Weight [g]
Ds6.35x2.54	40	0.005	3.8
Ds6.35x5.08	40	0.005	3.8
Ds6.35x12.7	40	0.005	3.8
Ds6.35x25.4	40	0.005	3.8
Ds8x10	75	0.01	12.1
Ds8x15	75	0.01	12.1
Ds10x12	75	0.01	12.1
Ds10x25	75	0.01	12.1
Ds10x50	75	0.01	12.1
Ds12x5	125	0.03	18.0
Ds12x25	125	0.03	18.0
Ds14x25	125	0.03	18.0
Ds14x30	125	0.03	18.0
Ds14x40.6	125	0.03	18.0

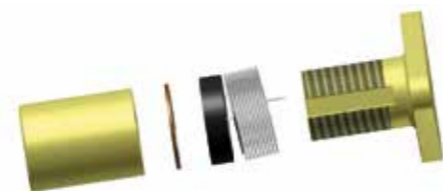
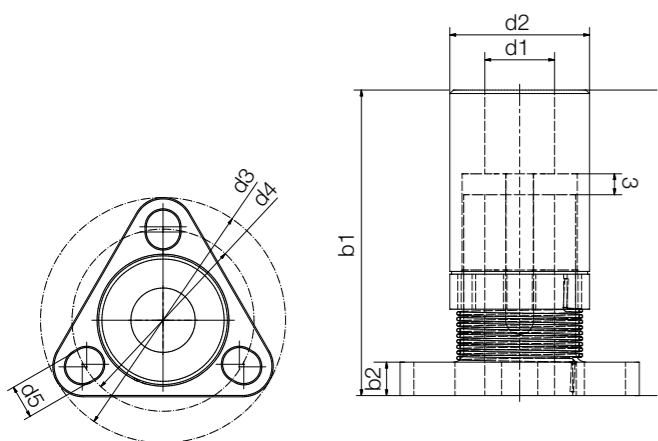
Order key

Part number	Type	Thread
DST- J F R M-LC-0001-DS 10X12		
dryspin® technology	iglidur® J	Type 0001
	Form F	Thread type
	Hand of rotation	Thread Ø [mm]
	Metric	Pitch
	Low Clearance	

Dimensions [mm]

d1 ¹⁵⁶⁾	d2 ¹⁵⁶⁾	d3	d4	d5	b1 ¹⁵⁶⁾	b2	Part No.
6.35	10	285	22.2	3.7	25.0	4.1	DST-JFRM-LC-0001-DS6.35X2.54
6.35	10	285	22.2	3.7	25.0	4.1	DST-JFRM-LC-0001-DS6.35X5.08
6.35	10	285	22.2	3.7	25.0	4.1	DST-JFRM-LC-0001-DS6.35X12.7
6.35	10	285	22.2	3.7	25.0	4.1	DST-JFRM-LC-0001-DS6.35X25.4
8	16	38.1	28.3	5.2	28.8	4.8	DST-JFRM-LC-0001-DS8X10
8	16	38.1	28.3	5.2	28.8	4.8	DST-JFRM-LC-0001-DS8X15
10	16	38.1	28.3	5.2	28.3	4.8	DST-JFRM-LC-0001-DS10X12
10	16	38.1	28.3	5.2	28.3	4.8	DST-JFRM-LC-0001-DS10X25
10	16	38.1	28.3	5.2	28.3	4.8	DST-JFRM-LC-0001-DS10X50
12	20	41.1	31.8	5.2	44.0	7.0	DST-JFRM-LC-0001-DS12X5
12	20	41.1	31.8	5.2	44.0	7.0	DST-JFRM-LC-0001-DS12X25
14	20	41.1	31.8	5.2	44.0	7.0	DST-JFRM-LC-0001-DS14X25
14	20	41.1	31.8	5.2	44.0	7.0	DST-JFRM-LC-0001-DS14X30
14	20	41.1	31.8	5.2	44.0	7.0	DST-JFRM-LC-0001-DS14X40.6

¹⁵⁶⁾ Tolerances according to DIN ISO 2768-1, tolerance class m (medium)




 Installation instructions and video tutorials
▶ www.igus-asean.com/zero-backlash-nut

Technical data

Thread	Max. stat. axial F [N]	Max. idling torque (with spring) ¹⁷⁰⁾ from [Nm]	Weight [g]
Ds5x5	75	0.02	5.1
Ds6.35x2.54	75	0.02	5.1
Ds6.35x5.08	75	0.02	5.1
Ds6.35x12.7	75	0.02	5.1
Ds6.35x25.4	75	0.02	5.1
Ds8x10	150	0.03	15.2
Ds8x15	150	0.03	15.2
Ds8x24	150	0.03	15.2
Ds10x12	150	0.04	15.2
Ds10x25	150	0.04	15.2
Ds10x50	150	0.04	15.2

¹⁷⁰⁾ The idling torque of the zero-backlash lead screw nut increases with service life. When calculating the dimensions, it is recommended that the maximum idling torque be taken into account.

 Order key

Part number	Type	Thread
DST- J F R M-ZB-0001-DS 10X12		
dryspin® technology	iglidur® J	
	Form F	
	Hand of rotation	
	Metric	
	Zero-backlash	
	Type 0001	
	Thread type	
	Thread Ø [mm]	
	Pitch	

Dimensions [mm]

d1 ¹⁵⁶⁾	d2 ¹⁵⁶⁾	d3	d4	d5	b1 ^{40) 156)}	b2	Part No.
5	13.5	28	22.2	3.7	31 – 36	4.1	DST-JFRM-ZB-0001-DS5X5 New
6.35	13.5	28	22.2	3.7	31 – 36	4.1	DST-JFRM-ZB-0001-DS6.35X2.54
6.35	13.5	28	22.2	3.7	31 – 36	4.1	DST-JFRM-ZB-0001-DS6.35X5.08
6.35	13.5	28	22.2	3.7	31 – 36	4.1	DST-JFRM-ZB-0001-DS6.35X12.7
6.35	13.5	28	22.2	3.7	31 – 36	4.1	DST-JFRM-ZB-0001-DS6.35X25.4
8	20	38.1	28.3	5.2	41 – 47	4.8	DST-JFRM-ZB-0001-DS8X10
8	20	38.1	28.3	5.2	41 – 47	4.8	DST-JFRM-ZB-0001-DS8X15
8	20	38.1	28.3	5.2	41 – 47	4.8	DST-JFRM-ZB-0001-DS8X24 New
10	20	38.1	28.3	5.2	41 – 47	4.8	DST-JFRM-ZB-0001-DS10X12
10	20	38.1	28.3	5.2	41 – 47	4.8	DST-JFRM-ZB-0001-DS10X25
10	20	38.1	28.3	5.2	41 – 47	4.8	DST-JFRM-ZB-0001-DS10X50

⁴⁰⁾ Variable according to thread pitch / clearance

¹⁵⁶⁾ Tolerances according to DIN ISO 2768-1, tolerance class m (medium)