

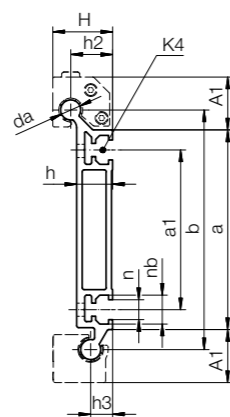
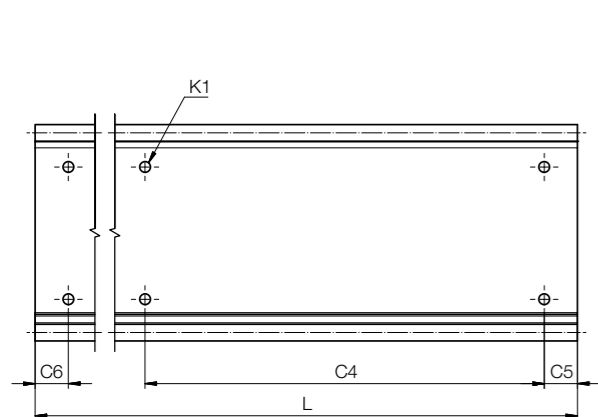


Order key

Type	Size
------	------

WSR-10-120-4000

Hybrid lateral rail	Shaft Ø	Rail width [mm]	Rail length [mm]
---------------------	---------	-----------------	------------------



Technical data [mm]

Part No.		Geometrical moment of inertia		Moment of resistance		K1 for screw	K4 for slot nut	Weight [kg/m]
		ly	lz	Wby	Wbz			
		[mm²]	[mm²]	[mm³]	[mm³]			
WSR-10-120	New	1,443,000	38,700	22,000	2,600	M6	-	2.58
WSR-10-120-UNGEBOHRT	New	1,443,000	38,700	22,000	2,600	-	MSX-B-0001-M6	2.58

Dimensions [mm]

Part No.	H	da	L	a	A1	b	h	h2	h3	a1	n	nb	C4	C5 = C6
	±0.25	-0.1	Max.	±0.6										Min. Max.
WSR-10-120	New	30	10	4,000	100	26.5	120	18	21	11	80	10	14.5	240 20 199.5
WSR-10-120-UNGEBOHRT	New	30	10	4,000	100	26.5	120	18	21	11	80	10	14.5	- - -

Can be combined with:



WJRM-31... WJRM-41...



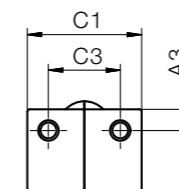
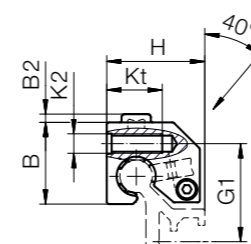
WJRM-31-10



WJRM-41-10



WJRM-41



Order key

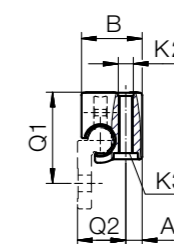
Type	Size
------	------

WJRM-31-10

Hybrid roller bearing	Double roller bearing	Size 10
-----------------------	-----------------------	---------

Options:
31: Single roller bearing, bottom assembly for better support
41: Double roller bearing, top assembly for better force absorption

Suitable mounting plate
► Page 1018



WJRM-31

Installation position 01

Technical data [mm]

Part No.		Static load capacity Co [N]	Dyn. load capacity Cz+ at total running distance [km]			Coefficient of friction in z-direction [μ]	F · v Max. [N · m/s]	Weight [g]
			10	100	200			
			[N]	[N]	[N]			
WJRM-31-10	New	250	250	90	50	< 0.1	50	91
WJRM-41-10	New	250	250	90	50	< 0.1	50	97

Dimensions [mm]

Part No.	A3	B	B2	C1	C3	H	G1	K2 for thread	K3 for screw	Q1	Q2	kt	
WJRM-31-10	New	6.5	24	-	35	22	28	27	M6	M5	36	19	16
WJRM-41-10	New	6.5	25	2.5	35	22	30	30	M6	M5	-	-	-

Can be combined with:



WSR...