

i Hard-anodised surfaces
▶ Page 958

o Curved rail profiles
▶ Page 962

Technical data and dimensions [mm]

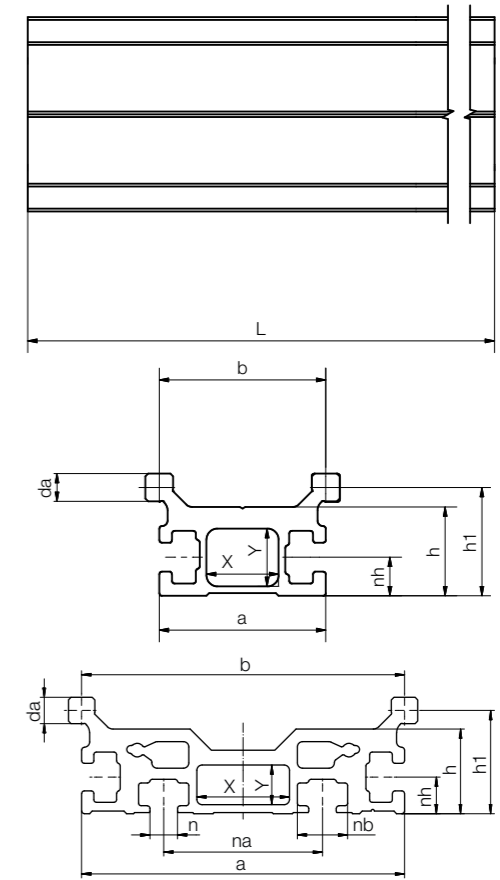
Part No.	Weight [kg/m]	H ⁵⁷⁾ ±0.25	da -0.1	dr	L Max.	a	A1	b	h	h1	h2	G1	G2	a1 ⁶¹⁾	Q1	Q2
WSQ-06-30	0.45	14	5	5	3,000	27-0.4	13.5	30	4	4 ⁵⁸⁾	7.5	22.5	15	-	21.5	15
WSQ-06-60	0.70	14	5	5	3,000	58-0.4	13.5	61	4	4 ⁵⁸⁾	7.0	42.5	30.5	40	17	15
WSQ-10-40	0.92	20	7.5	6.7	4,000	36-0.5	18.5	40	5.5	5.5 ⁵⁸⁾	11	30	20	-	29	21
WSQ-10-80	1.41	20	7.5	6.7	4,000	70-0.7	18.5	74	5.5	5.5 ⁵⁸⁾	11	27	17	40	26	21
WSQ-10-120	2.02	20	7.5	6.7	4,000	116-0.7	18.5	120	5.5	5.5 ⁵⁸⁾	11	30	20	80	29	21
WSQ-16-60	1.84	27	11.5	10.7	4,000	54-0.5	35.5	58	7.5	3.5	14	43	29	-	42	28
WSQ-20-80	3.30	36	15	14.1	4,000	74-0.7	30.0	82	9.5	4.5	20	38	21	40	37	37

Part No.	C4	C5		C6		K1 for screw DIN 912	Geometrical moment of inertia		Moment of resistance	
		Min.	Max.	Min.	Max.		ly [mm ⁴]	lz [mm ⁴]	Wby [mm ³]	Wbz [mm ³]
WSQ-06-30	60	20	49.5	20	49.5	M5 ⁵⁸⁾	19,000	1,250	1,100	200
WSQ-06-60	60	20	49.5	20	49.5	M5 ⁵⁸⁾	117,900	1,600	3,500	290
WSQ-10-40	120	20	79.5	20	79.5	M6 ⁵⁸⁾	71,600	5,580	3,000	610
WSQ-10-80	120	20	79.5	20	79.5	M6 ⁵⁸⁾	335,000	7,070	8,300	700
WSQ-10-120	120	20	79.5	20	79.5	M6 ⁵⁸⁾	1,175,000	8,000	18,400	760
WSQ-16-60	120	20	79.5	20	79.5	M8	324,700	20,500	9,400	1,700
WSQ-20-80	120	20	79.5	20	79.5	M8	1,145,000	75,300	23,600	4,500

⁵⁷⁾ Height dimension minus the bearing clearance tolerance ⁵⁸⁾ With plain holes

⁶¹⁾ WSQ-06-30/-10-40/-16-60 a single row of mounting holes down the centreline,
WSQ-06-60/10-80/-10-120/-20-80 two parallel rows of mounting holes

Can be combined with:



i Suitable end caps
▶ Page 1025

o Order example:
WSX-06-30/06-60: High profile rail, square
WSQ-06-30: Standard double rail, square

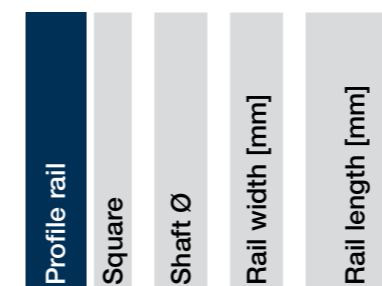
Technical data and dimensions [mm]

Part No.	Weight [kg/m]	da -0.1	L Max.	a	b	h	h1	nh	n	nb	na	X	Y	Geometrical moment of inertia		Moment of resistance	
														ly [mm ⁴]	lz [mm ⁴]	Wby [mm ³]	Wbz [mm ³]
WSX-06-30	0.76	5	4,000	29.7	30	16	19.5	7	-	-	-	12	10	30,391	11,674	1,736	845
WSX-06-60	1.39	5	4,000	61	61	16	19.5	6.9	5.2	9.5	30	17.5	7.5	212,826	17,018	6,448	1,398

o Order key

Type	Length
------	--------

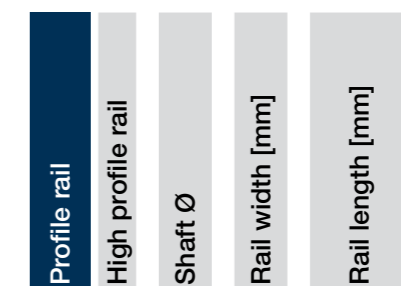
WS Q - 06 - 30 - 3000



o Order key

Type	Length
------	--------

WS X - 06 - 30 - 4000



Can be combined with:

