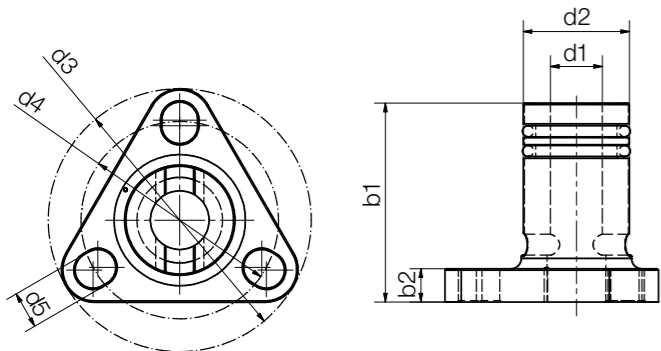


Order key

Type Thread

J F R M-LC-0001-TR 10X2

iglidur® material	Form F	Hand of rotation	Metric	Low Clearance	Type	Trapezoidal thread	Diameter [mm]	Pitch
-------------------	--------	------------------	--------	---------------	------	--------------------	---------------	-------



Technical data

Thread	Max. stat. axial F [N]	Max. idling torque (with O-ring) [Nm]	Weight [g]	Part No.
Single start				
Tr8x1.5	75	0.01–0.03	6.8	JFRM-LC-0001-TR8X1.5
Tr10x2	75	0.01–0.03	6.8	JFRM-LC-0001-TR10X2
Tr10x3	75	0.01–0.03	6.8	JFRM-LC-0001-TR10X3
Tr12x3	125	0.06	18.0	JFRM-LC-0001-TR12X3
Tr14x3	125	0.08	18.0	JFRM-LC-0001-TR14X3
Tr14x4	125	0.08	18.0	JFRM-LC-0001-TR14X4
Multi start				
Tr06x2P1	40	0.01–0.03	3.9	JFRM-LC-0001-TR06X2P1
Tr12x6P3	125	0.06	18.0	JFRM-LC-0001-TR12X6P3

Dimensions [mm]

Thread	d1 <sup>156)</sup>	d2 <sup>156)</sup>	d3	d4	d5	b1 <sup>156)</sup>	b2	Part No.
Single start								
Tr8x1.5	8	16.0	38.1	28.3	5.2	28.3	4.8	JFRM-LC-0001-TR8X1.5
Tr10x2	10	16.0	38.1	28.3	5.2	28.3	4.8	JFRM-LC-0001-TR10X2
Tr10x3	10	16.0	38.1	28.3	5.2	28.3	4.8	JFRM-LC-0001-TR10X3
Tr12x3	12	20	41.2	31.8	4.8	44.0	7.0	JFRM-LC-0001-TR12X3
Tr14x3	14	20	41.2	31.8	4.8	44.0	7.0	JFRM-LC-0001-TR14X3
Tr14x4	14	20	41.2	31.8	4.8	44.0	7.0	JFRM-LC-0001-TR14X4
Multi start								
Tr06x2P1	6	10.0	28.5	22.2	3.7	25.0	4.1	JFRM-LC-0001-TR06X2P1
Tr12x6P3	12	20	41.2	31.8	4.8	44.0	7.0	JFRM-LC-0001-TR12X6P3

<sup>156)</sup> Tolerances according to DIN ISO 2768-1, tolerance class m (medium)



## drylin® lead screw technology – Special designs

Angular compensation with spherical balls

With "Fast Forward" quick release mechanism

Split lead screw nuts

Accessories for lead screw nuts and lead screws

Lubrication and maintenance-free

