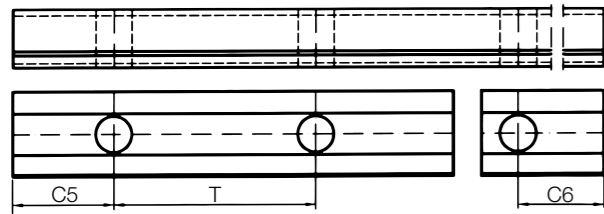
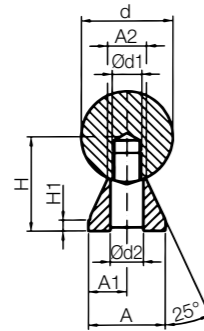




EWUMN



Order key

Type	Size	Options
------	------	---------

EWUMN - 20 - **- T1**

Low level supported stainless steel shaft, metric	Outer Ø	Shaft length [mm]	Hole pattern
---	---------	-------------------	--------------

EWUM: Supported stainless steel shaft

EWUMN: Low level supported stainless steel shaft

Available materials and lengths:

AISI 440B, max. 6,000mm

Hole pattern

T2: T2 pitch (standard)

T1: T1 pitch (upon request)

Dimensions [mm] – low level supported stainless steel shaft AISI 440B

Part No.	d	H ±0.02	H1	A	A1	A2 ±0.02	d1	d2	T	C5/C6		Weight [kg/m]
										Min.	Max.	
EWUMN-12	12	14.5	3	11	5.5	5.4	M4	4.5	75	20	57	1.62
EWUMN-16	16	18	3	14	7.0	7.0	M5	5.5	75	20	57	2.54
EWUMN-20	20	22	3	17	8.5	8.1	M6	6.6	75	20	57	3.81
EWUMN-25	25	26	3	21	10.5	10.3	M8	9.0	75	20	57	5.62
EWUMN-30	30	30	3	23	11.5	11.0	M10	11.0	100	20	69.5	7.63
EWUMN-40	40	39	4	30	15.0	15.0	M12	13.5	100	20	69.5	13.47
EWUMN-50	50	46	5	35	17.5	19.0	M14	15.5	100	20	69.5	20.31

Low level supported shafts are delivered unmounted.



Order example:

EWUMN-16-500: Low level supported stainless steel shaft (AISI 440B), 16mm outer Ø, 500mm length