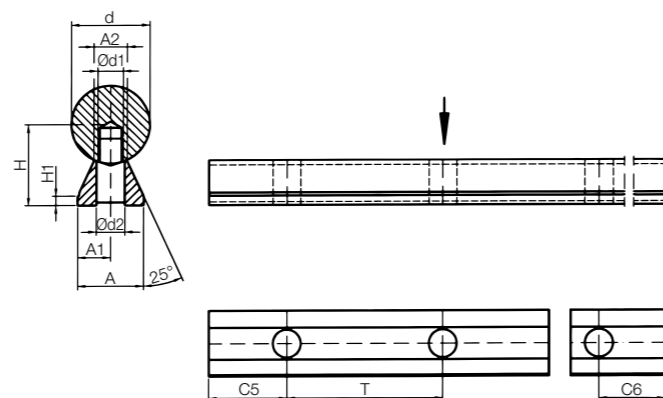


EWUMN-ES/
EWUMSN-ES

! igus® recommendation: Linear plain bearings equipped with iglidur® E7 liners for 8 times longer service life

Low level shaft support blocks made of stainless steel

- Connection sizes are identical to low-level aluminium supports ► **Page 1161**

Dimensions [mm] – low level partially supported stainless steel shafts AISI 440B

Part No.	d	H ±0.02	H1	A	A1	A2	d1	d2	T	C5/C6		Weight [kg/m]
										Min.	Max.	
EWUMN-ES-12	12	14.5	3	11	5.5	5.4	M4	4.2	75	20	57.0	1.00
EWUMN-ES-16	16	18.0	3	14	7.0	7.0	M5	5.2	75	20	57.0	1.76
EWUMN-ES-20	20	22.0	3	17	8.5	8.1	M6	6.2	75	20	57.0	2.77
EWUMN-ES-25	25	26.0	3	21	10.5	10.3	M8	8.2	75	20	57.0	4.35
EWUMN-ES-30	30	30.0	3	23	11.5	11.0	M10	10.2	100	20	69.5	6.01
EWUMN-ES-40	40	39.0	4	30	15.0	15.0	M12	12.5	100	20	69.5	10.80

Low-level partially supported stainless steel shafts are supplied unassembled



Order example:

EWUMN-ES-20-500: Low level partially supported stainless steel shafts. AISI 440B material, T2 pitch (standard), 20mm outer Ø, 500mm length



Order key

Type	Size	Options
EWUMSN-ES- 20 -500-T2		
Partially supported stainless steel shaft, metric	Material	Outer Ø
	Shaft length [mm]	Hole pattern

Available materials and lengths:

AISI 440B, max. 6,000mm

► EWUMN

AISI 316Ti, max. 3,000mm

► EWUMSN

Dimensions [mm] – low level partially supported stainless steel shafts AISI 316Ti

Part No.	d	H ±0.02	H1	A	A1	A2	d1	d2	T	C5/C6		Weight [kg/m]
										Min.	Max.	
EWUMSN-ES-12	12	14.5	3	11	5.5	5.4	M4	4.2	75	20	57.0	1.00
EWUMSN-ES-16	16	18.0	3	14	7.0	7.0	M5	5.2	75	20	57.0	1.76
EWUMSN-ES-20	20	22.0	3	17	8.5	8.1	M6	6.2	75	20	57.0	2.77
EWUMSN-ES-25	25	26.0	3	21	10.5	10.3	M8	8.2	75	20	57.0	4.35
EWUMSN-ES-30	30	30.0	3	23	11.5	11.0	M10	10.2	100	20	69.5	6.01
EWUMSN-ES-40	40	39.0	4	30	15.0	15.0	M12	12.5	100	20	69.5	10.80

Low-level partially supported stainless steel shafts are supplied unassembled



Order example:

EWUMSN-ES-20-500-T2: Low-level partially supported stainless steel shaft. AISI 316Ti material, T2 pitch, outer Ø 20mm, length 500mm