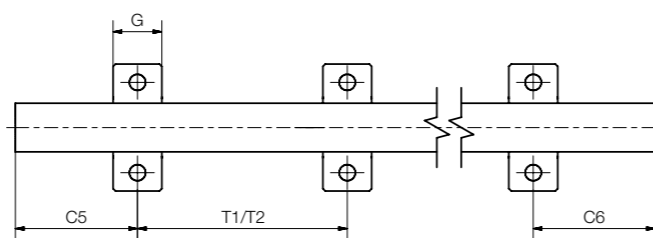
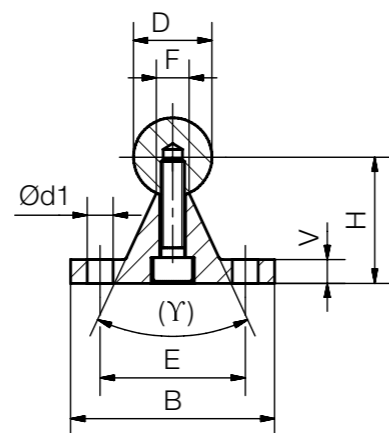


EWUM-ES/  
EWUMS-ES

**!** igus® recommendation: Linear plain bearings equipped with iglidur® E7 liners for 8 times longer service life

Standard shaft support blocks made of stainless steel

● Connection sizes are identical to aluminium supports

► Page 1160

### Dimensions [mm] – partially supported stainless steel shafts AISI 440B

Part No.	D h6	B	H ±0.02	V	d1	E	γ	F	G	T1	C5/C6 for T1		T2 Standard	C5/C6 for T2	
											Min.	Max.		Min.	Max.
EWUM-ES-12	12	40	22	5	4.5	29	–	5.8	14	75	20	57	120	20	79
EWUM-ES-16	16	45	26	5	5.5	33	–	7.0	16	100	20	69	150	20	94
EWUM-ES-20	20	52	32	6	6.6	37	50°	8.3	20	100	20	69	150	20	94
EWUM-ES-25	25	57	36	6	6.6	42	–	10.8	25	150	20	79	200	20	119
EWUM-ES-30	30	69	42	7	9.0	51	–	11.0	25	150	20	94	200	20	119
EWUM-ES-40	40	73	50	8	9.0	55	–	15.0	25	200	20	119	300	20	169

**!** Order example:

**EWUM-ES-20-500**, partially supported stainless steel shaft (shaft and support made of stainless steel), AISI 440B material, T2 pitch, outer Ø 20mm, L = 500mm



**!** Order key

Type Size Options

**EWUMS-ES- 20 -500-T2**

Partially supported stainless steel shaft, metric	Material	Outer Ø	Shaft length [mm]	Hole pattern
---	----------	---------	-------------------	--------------

Available materials and lengths:

AISI 440B, max. 6,000mm

► EWUM

AISI 316Ti, max. 3,000mm

► EWUMS

Options:

**Blank:** AISI 440B material

**S:** AISI 316Ti

**Hole pattern:**

**T2:** T2 pitch (standard)

**T1:** T1 pitch

### Dimensions [mm] – partially supported stainless steel shafts AISI 316Ti

Part No.	D h6	B	H ±0.02	V	d1	E	γ	F	G	T1	C5/C6 for T1		T2 Standard	C5/C6 for T2	
											Min.	Max.		Min.	Max.
EWUMS-ES-12	12	40	22	5	4.5	29	–	5.8	14	75	20	57	120	20	79
EWUMS-ES-16	16	45	26	5	5.5	33	–	7.0	16	100	20	69	150	20	94
EWUMS-ES-20	20	52	32	6	6.6	37	50°	8.3	20	100	20	69	150	20	94
EWUMS-ES-25	25	57	36	6	6.6	42	–	10.8	25	150	20	79	200	20	119
EWUMS-ES-30	30	69	42	7	9.0	51	–	11.0	25	150	20	94	200	20	119
EWUMS-ES-40	40	73	50	8	9.0	55	–	15.0	25	200	20	119	300	20	169

**!** Order example:

**EWUM-ES-20-500**, partially supported stainless steel shaft (shaft and support made of stainless steel), AISI 316Ti material, T1 pitch, outer Ø 20mm, L = 500mm