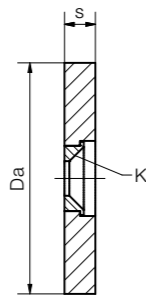
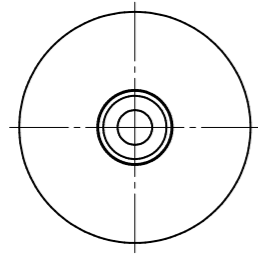


# drylin® R sliding discs | Product range

Large force displacement on different surfaces



## Order key

Type Size

**RSD J-40-06**

Slide disc	iglidur® J	Outer Ø	Width
------------	------------	---------	-------

- Made from the high-performance plastic iglidur® J
- Low coefficient of friction
- Screw through the reinforced hole in the middle for a firm hold

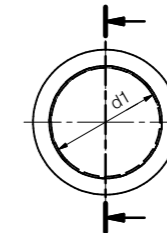
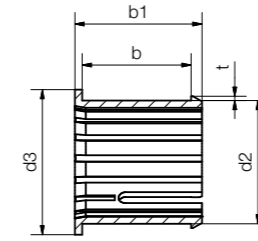
Min. -50°C  
Max. +90°C

### Dimensions [mm]

Outer Ø Da	Wear limit	Width s	K For countersunk screw	Max. static load capacity [N]	Part No.
40	1.5	6 ± 0.05	M6	28,500	<b>RSDJ-40-06</b>
60	2.5	8 ± 0.05	M8	66,000	<b>RSDJ-60-08</b>
80	2.5	8 ± 0.05	M8	120,000	<b>RSDJ-80-08</b>

# drylin® R clip in | Product range

Clip-on liners



## Order key

Type Size

**JUCM-1216-16**

iglidur® J	Liner	Clip-on	Metric	Inner Ø d1	Outer Ø d2	Length b
------------	-------	---------	--------	------------	------------	----------

- Quick installation by hand for sheet thicknesses of 12 to 30mm
- No locating spigot required

78) According to igus® testing method ▶ Page 1146  
82) Design tips ▶ Page 1078

Please note: Installation instructions ▶ Page 1079

Min. -50°C  
Max. +90°C

### Dimensions [mm]

d1	d2	d3	b +0.05 / +0.25	b1	t	Part No.
12	16	20	16	20.5	0.8	<b>JUCM-1216-16</b>
14	18	22	18	22.5	0.8	<b>JUCM-1418-18</b>
15	17	22	15	18.0	0.8	<b>JUCM-1517-15</b> <span style="color: orange;">New</span>
16	20	25	20	24.5	0.8	<b>JUCM-1620-20</b>
18	22	26	20	24.5	0.8	<b>JUCM-1822-20</b>
20	24	30	25	30.0	1.0	<b>JUCM-2024-25</b>
22	27	34	27	32.0	1.0	<b>JUCM-2227-27</b>
22	27	32	34	39.5	1.0	<b>JUCM-2227-34</b>
25	29	35	30	35.5	1.0	<b>JUCM-2529-30</b>
30	34	40	30	35.0	1.2	<b>JUCM-3034-30</b>

### Technical data

Part No.	d1 tolerance <sup>78)</sup> [mm]	Fmax. dynamic <sup>82)</sup>	Fmax. static <sup>82)</sup>	Weight [g]
		p = 5MPa [N]	p = 35MPa [N]	
<b>JUCM-1216-16</b>	+0.04 +0.10	320	1,600	2.5
<b>JUCM-1418-18</b>	+0.04 +0.10	440	2,200	2.9
<b>JUCM-1517-15</b>	+0.04 +0.10	380	1,900	1.4
<b>JUCM-1620-20</b>	+0.04 +0.10	560	2,800	3.9
<b>JUCM-1822-20</b>	+0.04 +0.10	630	3,150	4.2
<b>JUCM-2024-25</b>	+0.04 +0.12	880	4,400	5.8
<b>JUCM-2227-27</b>	+0.04 +0.12	1,000	5,000	9.4
<b>JUCM-2227-34</b>	+0.04 +0.12	1,300	6,500	10.3
<b>JUCM-2529-30</b>	+0.04 +0.12	1,300	6,500	8.6
<b>JUCM-3034-30</b>	+0.04 +0.12	1,500	7,500	10.0

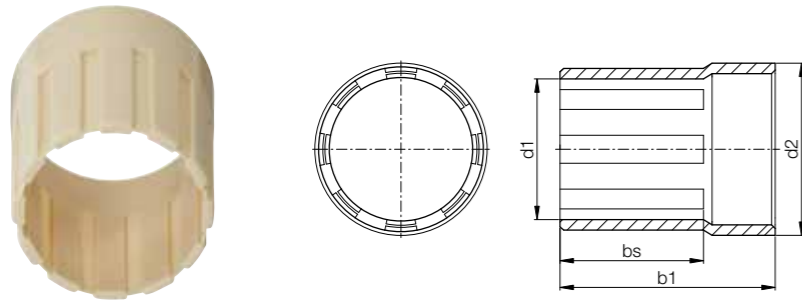


Order key

Type	Size
------	------

W L M-0608-10

igidur® L100	L1 series	Metric	Inner Ø d1	Outer Ø d2	Length
--------------	-----------	--------	------------	------------	--------



- Extreme wear resistance
- Low coefficient of friction



<sup>80)</sup> Measured with plug gauge

Please note: Installation instructions ► Page 1079

Material properties ► Page 1654



Min. -40°C

Max. +100°C

Dimensions [mm]

d1	d1 tolerance <sup>80)</sup>	d2	b1	bs	Part No.
6	+0.000 +0.040	8	10	6	WLM-0608-10
8	+0.000 +0.050	10	12	8	WLM-0810-12
10	+0.000 +0.050	12	14.5	10	WLM-1012-14
10	+0.000 +0.050	12	16	10	WLM-1012-16
12	+0.000 +0.050	14	16	10	WLM-1214-16
12	+0.000 +0.050	14	25	15	WLM-1214-25
16	+0.000 +0.050	18	18	10	WLM-1618-18
16	+0.000 +0.050	18	26	16	WLM-1618-26
20	+0.000 +0.060	23	22.5	12.5	WLM-2023-22
20	+0.000 +0.060	23	30	20	WLM-2023-30
22	+0.000 +0.060	25	30	20	WLM-2225-30
25	+0.000 +0.060	28	29	19	WLM-2528-29
25	+0.000 +0.060	28	35	25	WLM-2528-35
30	+0.000 +0.060	34	34	24	WLM-3034-34
30	+0.000 +0.060	34	40	30	WLM-3034-40
40	+0.000 +0.060	44	40	30	WLM-4044-40
40	+0.000 +0.060	44	50	40	WLM-4044-50
50	+0.000 +0.070	55	50	40	WLM-5055-50
50	+0.000 +0.070	55	60	50	WLM-5055-60

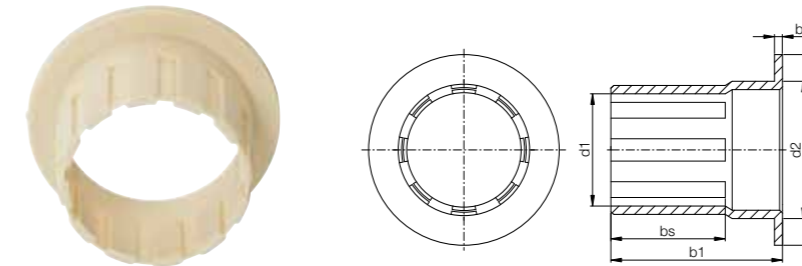


Order key

Type	Size
------	------

W L F M-1214-15

igidur® L100	L1 series	With flange	Metric	Inner Ø d1	Outer Ø d2	Length
--------------	-----------	-------------	--------	------------	------------	--------



- Extreme wear resistance
- Low coefficient of friction



<sup>80)</sup> Measured with plug gauge

Please note: Installation instructions ► Page 1079

Material properties ► Page 1654



Min. -40°C

Max. +100°C

Dimensions [mm]

d1	d1 tolerance <sup>80)</sup>	d2	d3	b1	b2	bs	Part No.
12	+0.000 +0.050	14	20	15.0	1.0	9	WLFM-1214-15
16	+0.000 +0.050	18	24	16.0	1.0	10	WLFM-1618-16
20	+0.000 +0.060	23	30	16.5	1.5	10	WLFM-2023-16
25	+0.000 +0.060	28	35	21.5	1.5	11	WLFM-2528-21
30	+0.000 +0.060	34	42	27.0	2.0	15	WLFM-3034-27
40	+0.000 +0.060	44	52	32.0	2.0	20	WLFM-4044-32
50	+0.000 +0.070	55	63	37.5	2.5	25	WLFM-5055-37