

drylin® R solid plastic bearings | Product range

Standard design made from iglidur® J (the all-rounder)



Order key

Type	Size
R J M-01-10	
Closed	iglidur® J
	Metric
	Standard
	Inner Ø d1



⁷⁸⁾ According to igus® testing method ▶ Page 1146

⁸²⁾ Design tips ▶ Page 1078

⁸³⁾ Applies by room temperature: press-fit decrease with time depending on the temperature

Please note: Installation instructions ▶ Page 1079



Imperial dimensions

▶ Page 1613

- Assembly by press-fitting
- Secured by circlips



Min. -20°C
Max. +60°C

Dimensions [mm]

d1	d2	B	B1	s	dn	Part No.
8	16	25	16.2	1.10	15.2	RJM-01-08
10	19	29	21.6	1.30	17.5	RJM-01-10
12	22	32	22.6	1.30	20.5	RJM-01-12
16	26	36	24.6	1.30	24.2	RJM-01-16
20	32	45	31.2	1.60	29.6	RJM-01-20
25	40	58	43.7	1.85	36.5	RJM-01-25
30	47	68	51.7	1.85	43.5	RJM-01-30
40	62	80	60.3	2.15	57.8	RJM-01-40

Technical data

Part No.	d1 tolerance ⁷⁸⁾	Fmax. dynamic ⁸²⁾	Fmax. static ⁸²⁾	Weight	Press-fit force ⁸³⁾
	[mm]	p = 2.5MPa [N]	p = 17.5MPa [N]		
RJM-01-08	+0.025 +0.061	250	1,750	4	400
RJM-01-10	+0.025 +0.061	363	2,538	7	700
RJM-01-12	+0.032 +0.075	480	3,360	9	1,300
RJM-01-16	+0.032 +0.075	720	5,040	13	1,100
RJM-01-20	+0.040 +0.092	1,125	7,875	24	1,500
RJM-01-25	+0.040 +0.092	1,813	12,688	47	3,500
RJM-01-30	+0.040 +0.092	2,550	17,850	72	4,500
RJM-01-40	+0.050 +0.112	4,000	28,000	127	4,200

Can be combined with:



RQA-04



RTA-04



RGA-04



RGAS-04

drylin® R solid plastic bearings | Product range

Standard design, precise, made from iglidur® J (the all-rounder)



Order key

Type	Size
R J M P-01-10	
Closed	iglidur® J
	Metric
	Precise
	Standard
	Inner Ø d1



⁷⁸⁾ According to igus® testing method ▶ Page 1146

⁸²⁾ Design tips ▶ Page 1078

Please note: Installation instructions ▶ Page 1079



Min. -20°C
Max. +60°C



Imperial dimensions

▶ Page 1613

- Easy assembly by soft press-fit
- Reduced bearing clearance
- Secured by circlips

Dimensions [mm]

d1	d2	B	B1	s	dn	Part No.
6	12	19	13.5	1.10	11.5	RJMP-01-06
8	16	25	16.2	1.10	15.2	RJMP-01-08
10	19	29	21.6	1.30	17.5	RJMP-01-10
12	22	32	22.6	1.30	20.5	RJMP-01-12
16	26	36	24.6	1.30	24.2	RJMP-01-16
20	32	45	31.2	1.60	29.6	RJMP-01-20
25	40	58	43.7	1.85	36.5	RJMP-01-25
30	47	68	51.7	1.85	43.5	RJMP-01-30

Technical data

Part No.	d1 tolerance ⁷⁸⁾	Fmax. dynamic ⁸²⁾	Fmax. static ⁸²⁾	Weight
	[mm]	p = 2.5MPa [N]	p = 17.5MPa [N]	
RJMP-01-06	+0.000 +0.030	200	1,400	2
RJMP-01-08	+0.000 +0.040	250	1,750	4
RJMP-01-10	+0.000 +0.040	363	2,538	7
RJMP-01-12	+0.000 +0.040	480	3,360	9
RJMP-01-16	+0.000 +0.040	720	5,040	13
RJMP-01-20	+0.000 +0.040	1,125	7,875	24
RJMP-01-25	+0.000 +0.050	1,813	12,688	47
RJMP-01-30	+0.000 +0.050	2,550	17,850	72

Can be combined with:



RQA-04



RTA-04



RGA-04



RGAS-04

drylin® R solid plastic bearings | Product range

Linear plain bearings with Japanese dimensions made from iglidur® J4



Order key

Type	Size
R J 4 J P-01-10	
Closed	iglidur® J4
	Japan standard
	Precise
	Standard
	Inner Ø d1

- Alternative to ball bearings with Japanese dimension
- Quickly assembled
- Secured by circlips



⁷⁸⁾ According to igus® testing method ► Page 1146

⁸²⁾ Design tips ► Page 1078

Please note: Installation instructions ► Page 1079

Material properties ► Page 1652



Min. -20°C

Max. +60°C

Dimensions [mm]

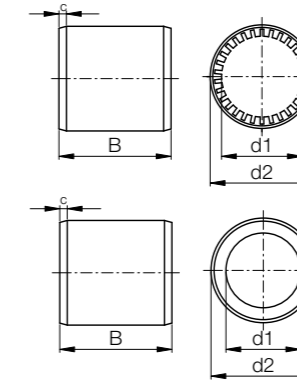
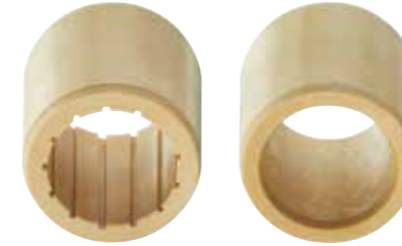
d1	d2	B	B1	s	dn	Part No.
8	15	24	17.5	1.1	14.3	RJ4JP-01-08
10	19	29	22.0	1.3	18.0	RJ4JP-01-10
12	21	30	23.0	1.3	20.0	RJ4JP-01-12
16	28	37	26.5	1.6	26.6	RJ4JP-01-16
20	32	42	30.5	1.6	30.3	RJ4JP-01-20
25	40	59	41.1	1.85	37.5	RJ4JP-01-25
30	45	64	44.6	1.85	42.5	RJ4JP-01-30

Technical data

Part No.	d1 tolerance ⁷⁸⁾	Fmax. dynamic ⁸²⁾	Fmax. static ⁸²⁾	Weight
	[mm]	p = 5MPa [N]	p = 35MPa [N]	
RJ4JP-01-08	+0.000 +0.040	200	800	2
RJ4JP-01-10	+0.000 +0.040	300	1,200	6
RJ4JP-01-12	+0.000 +0.040	400	1,600	8
RJ4JP-01-16	+0.000 +0.040	700	2,800	16
RJ4JP-01-20	+0.000 +0.040	1,000	4,000	23
RJ4JP-01-25	+0.000 +0.050	1,550	6,500	47
RJ4JP-01-30	+0.000 +0.050	2,200	8,500	72

drylin® R solid plastic bearings | Product range

Low-cost linear plain bearings made from iglidur® J260



Order key

Type	Size
R J260 U M-02-12	
Closed	iglidur® J260
	Grooved
	Metric
	Compact
	Inner Ø d1

- 2 variations: RJ260M (with plain design) and RJ260UM (grooved structure)



⁷⁸⁾ According to igus® testing method ► Page 1146

⁸²⁾ Design tips ► Page 1078

Please note: Installation instructions ► Page 1079



Min. -20°C

Max. +60°C

Dimensions [mm]

d1	d2	B	C	Part No.
12	19	28	1.5x15°	RJ260UM-02-12
16	24	30	1.5x15°	RJ260UM-02-16
20	28	30	2.0x15°	RJ260UM-02-20
25	35	40	2.0x15°	RJ260UM-02-25

Technical data

Part No.	d1 tolerance ⁷⁸⁾	Fmax. dynamic ⁸²⁾	Fmax. static ⁸²⁾	Weight
	[mm]	p = 2.5MPa [N]	p = 17.5MPa [N]	
RJ260UM-02-12	+0.035 +0.080	420	2,940	6.2
RJ260UM-02-16	+0.035 +0.080	600	4,200	9.7
RJ260UM-02-20	+0.040 +0.095	750	5,250	11.7
RJ260UM-02-25	+0.040 +0.095	1,250	8,750	22.8