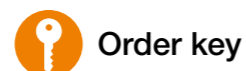




AWMR

AWMP



Order key

Type	Size	Options
AW M P - 06 - 2000		
Aluminium shaft	Metric	Precise
	Outer Ø	Shaft length [mm]

AWMP:
Solid shaft up to
Ø 25mm
Hollow shaft from
Ø 30mm
AWMR:
Tube



igus® recommendation: Linear plain bearings equipped with iglidur® J200 liners for the longest service life



Hard-anodised surfaces

▶ Page 958

Minimum saw lengths

▶ Page 961



Please contact us!

drylin® shafts can be individually machined. Please send us your drawing or configure online. We can then provide a quotation quickly.

▶ www.igus-asean.com/shaft-configurator

- Material: EN AW 6061/6060
- Straightness: EN 754-3
- Hardness: 75 HB
- Surface: hard-anodised
- Hardness: up to 550 HV
- Imperial shafts available upon request

Dimensions [mm]

Part No.	Design	Outer Ø	Tolerance	Insulation thickness	Inner Ø	Max. length	Weight [kg/m]
AWMP-06	Solid shaft	6	h8	–	–	3,000	0.08
AWMP-08	Solid shaft	8	h8	–	–	3,000	0.14
AWMP-10	Solid shaft	10	h8	–	–	3,000	0.22
AWMP-12	Solid shaft	12	h8	–	–	3,000	0.32
AWMR-12	Tube	12	h8	2	8	3,000	0.17
AWMP-16	Solid shaft	16	h8	–	–	3,000	0.56
AWMR-16	Tube	16	h8	2	12	3,000	0.25
AWMP-20	Solid shaft	20	h8	–	–	3,000	0.88
AWMR-20	Tube	20	h9	2	16	3,000	0.32
AWMP-25	Solid shaft	25	h8	–	–	3,000	1.37
AWMR-25	Tube	25	h9	3	19	3,000	0.59
AWMP-30	Hollow shaft	30	h8	7.5	15	3,000	1.48
AWMPV-30	Solid shaft	30	h8	–	–	3,000	1.9
AWMP-40	Hollow shaft	40	h8	10	20	3,000	2.63
AWMPV-40	Solid shaft	40	h8	–	–	3,000	3.4
AWMP-50	Hollow shaft	50	h8	11	28	3,000	3.75
AWMP-60	Hollow shaft	60	h8	11	38	3,000	4.7



Order example:

AWMP-12-500: Precision aluminium shaft, 12mm Ø, 500mm length



AWMU



Order key

Type	Size	Options
AW M U - 12 - 2000		
Aluminium shaft	Metric	Supported
	Outer Ø	Shaft length [mm]



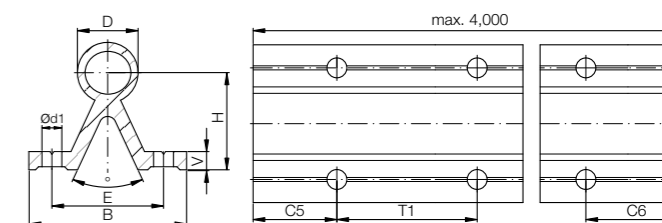
Hard-anodised surfaces

▶ Page 958

Minimum saw lengths

▶ Page 961

- Material: EN AW 6061/6060
- Straightness: DIN 12020
- Hardness: 75 HB
- Surface: hard-anodised
- Hardness: up to 550 HV
- Symmetrical standard hole pattern C5 = C6



Dimensions [mm]

Part No.	D	B	H	V	d1	(°)	E	T1	C5/C6	Max. length	Weight [kg/m]	Iy [mm ⁴]	Iz [mm ⁴]	Wby [mm ²]	Wbz [mm ²]
AWMU-12	12	40	22	5	4.5	50	29	75	20 57	4,000	0.75	26,600	19,700	1,330	1,091
AWMU-16	16	45	26	5	5.5	50	33	100	20 69	4,000	1.00	40,000	39,200	1,778	1,844
AWMU-20	20	52	32	6	6.6	50	37	100	20 69	4,000	1.42	76,600	86,200	2,946	3,336
AWMU-25	25	57	36	6	6.6	50	42	120	20 79	4,000	1.81	109,800	146,700	3,853	5,103
AWMU-30	30	69	42	7	9.0	50	51	150	20 94	4,000	2.69	226,900	328,700	6,577	10,049
AWMU-40 ⁸⁶⁾	40	73	50	8	9.0	50	55	200	20 119	4,000	4.06	382,100	734,800	10,468	19,160

⁸⁶⁾ The tolerance for the shaft diameter D amounts -0.15

Order example:

AWMU-16-500: supported aluminium shaft, 16mm Ø, 500mm length



SWM SWUMN SWUM

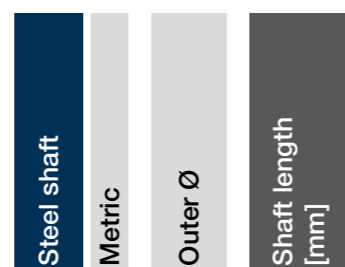
- Completely supported and mounted with standard aluminium support
- Available shaft materials:
 - ▶ Cf53 steel (AISI 1055), hardened/ground
 - ▶ Cf53 steel (AISI 1055), hard-chromed
- For supported shafts:
 - ▶ Partial shaft support supplied in lengths of 600mm max.
 - ▶ Standard pitch T2, T1 also possible upon request
 - ▶ Symmetrical hole pitches C5 = C6



Order key

Type Size Options

SW M- 06 - 2000



igus® recommendation: Linear plain bearings equipped with iglidur® E7 liners for 8 times longer service life

Dimensions [mm] – steel shafts 1.1213

Part No.	Outer Ø	Weight [kg/m]	Max. length	Effective hardness depth (at 1.1213)
SWM-06	6	0.222	3,000	0.8
SWM-08	8	0.359	4,000	0.9
SWM-10	10	0.617	4,000	0.9
SWM-12	12	0.888	6,000	1.0
SWM-16	16	1.578	6,000	1.2
SWM-20	20	2.466	6,000	1.6
SWM-25	25	3.853	6,000	1.8
SWM-30	30	5.549	6,000	2.0
SWM-40	40	9.865	6,000	2.2
SWM-50	50	15.413	6,000	2.4

Dimensions [mm] – hard-chromed steel shafts 1.1213

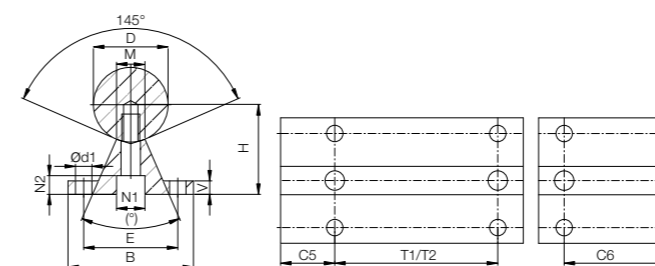
Part No.	Outer Ø	Weight [kg/m]	Max. length	Effective hardness depth (at 1.1213)
SWMH-06	6	0.222	3,000	0.8
SWMH-08	8	0.359	4,000	0.9
SWMH-10	10	0.617	4,000	0.9
SWMH-12	12	0.888	6,000	1.0
SWMH-16	16	1.578	6,000	1.2
SWMH-20	20	2.466	6,000	1.6
SWMH-25	25	3.853	6,000	1.8
SWMH-30	30	5.549	6,000	2.0
SWMH-40	40	9.865	6,000	2.2
SWMH-50	50	15.413	6,000	2.4



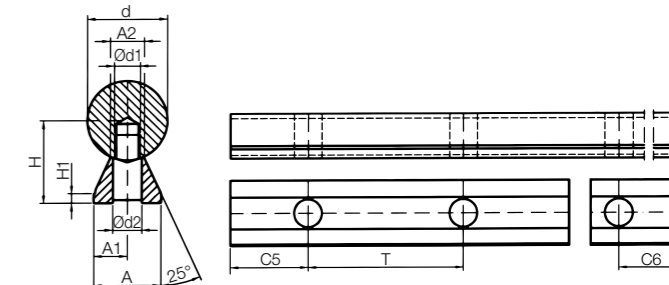
Order example:

SWM-16-500: steel shaft 16mm Ø 1.1213, 500mm in length

SWUM



SWUMN



Please contact us!

drylin® shafts can be individually machined. Please send us your drawing or configure online. We can then provide a quotation quickly.

▶ www.igus-asean.com/shaft-configurator

Dimensions [mm] – supported steel shafts 1.1213

Part No.	D	B	H	V	N1	N2	d1	M (°)	E	T1	C5/C6		T2	C5/C6		Weight [kg/m]	
											±0.02	±0.15		Min. Max.	Min. Max.		
											for T1	Standard		for T2	Standard		
SWUM-12	12	40	22	5	8.0	5.0	4.5	5.8	50	29	75	20	57	120	20	79	1.75
SWUM-16	16	45	26	5	9.5	6.0	5.5	7.0	50	33	100	20	69	150	20	94	2.64
SWUM-20	20	52	32	6	11.0	6.5	6.6	8.3	50	37	100	20	69	150	20	94	3.97
SWUM-25	25	57	36	6	14.0	8.5	6.6	10.8	50	42	120	20	79	200	20	119	5.65
SWUM-30	30	69	42	7	17.0	10.5	9.0	11.0	50	51	150	20	94	200	20	119	7.93
SWUM-40	40	73	50	8	17.0	10.5	9.0	15.0	50	55	200	20	119	300	20	169	12.88
SWUM-50	50	84	60	9	19.0	12.5	11.0	19.0	46	63	200	20	119	300	20	169	19.60

Dimensions [mm] – supported steel shafts 1.1213

Part No.	d	H	H1	A	A1	A2	d1	d2	T	C5/C6		Weight [kg/m]
										±0.02	±0.02	
SWUMN-12	12	14.5	3	11	5.5	5.4	M4	4.5	75	20	57	1.62
SWUMN-16	16	18	3	14	7.0	7.0	M5	5.5	75	20	57	2.54
SWUMN-20	20	22	3	17	8.5	8.1	M6	6.6	75	20	57	3.81
SWUMN-25	25	26	3	21	10.5	10.3	M8	9.0	75	20	57	5.62
SWUMN-30	30	30	3	23	11.5	11.0	M10	11.0	100	20	69.5	7.63
SWUMN-40	40	39	4	30	15.0	15.0	M12	13.5	100	20	69.5	13.47
SWUMN-50	50	46	5	35	17.5	19.0	M14	15.5	100	20	69.5	20.31

Low level supported shafts are delivered unmounted.



Order example:

SWUM-16-500: supported steel shaft 16mm Ø made from 1.1213, 500mm length



EWM

EEWM

EWMR



igus® recommendation: Linear plain bearings equipped with iglidur® E7 liners for 8 times longer service life



Please contact us!

drylin® shafts can be individually machined. Please send us your drawing or configure online. We can then provide a quotation quickly.

► www.igus-asean.com/shaft-configurator

Dimensions [mm] – hardened stainless steel AISI 440B

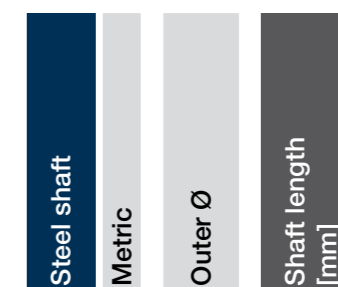
Part No.	Outer Ø	Weight [kg/m]	Max. length	Effective hardness depth
EWM-06	6	0.222	3,000	0.8
EWM-08	8	0.359	4,000	0.9
EWM-10	10	0.617	4,000	0.9
EWM-12	12	0.888	6,000	1.0
EWM-16	16	1.578	6,000	1.2
EWM-20	20	2.466	6,000	1.6
EWM-25	25	3.853	6,000	1.8
EWM-30	30	5.549	6,000	2.0
EWM-40	40	9.865	6,000	2.2
EWM-50	50	15.413	6,000	2.4



Order key

Type Size Options

EW M- 06 -2000



Available shaft materials

AISI 440B, hardened/ground ► EWM
 AISI 420C, hardened/ground ► EEWM
 AISI 304, drawn ► EWMR
 AISI 316Ti, drawn ► EWMS

Dimensions [mm] – hardened stainless steel AISI 420C

Part No.	Outer Ø	Weight [kg/m]	Max. length	Effective hardness depth
EEWM-06	6	0.222	3,000	0.8
EEWM-08	8	0.359	4,000	0.9
EEWM-10	10	0.617	4,000	0.9
EEWM-12	12	0.888	6,000	1.0
EEWM-16	16	1.578	6,000	1.2
EEWM-20	20	2.466	6,000	1.6
EEWM-25	25	3.853	6,000	1.8
EEWM-30	30	5.549	6,000	2.0
EEWM-40	40	9.865	6,000	2.2
EEWM-50	50	15.413	6,000	2.4

Dimensions [mm] – stainless steel AISI 304 (EWMR) or AISI 316Ti soft stainless steel (EWMS)

Part No.	Outer Ø	Weight [kg/m]	Max. length
EWMR-06 EWMS-06	6	0.222	3,000
EWMR-08 EWMS-08	8	0.359	3,000
EWMR-10 EWMS-10	10	0.617	3,000
EWMR-12 EWMS-12	12	0.888	3,000
EWMR-16 EWMS-16	16	1.578	3,000
EWMR-20 EWMS-20	20	2.466	3,000
EWMR-25 EWMS-25	25	3.853	3,000
EWMR-30 EWMS-30	30	5.549	3,000
EWMR-40 EWMS-40	30	5.549	3,000
EWMR-50	30	5.549	3,000



Order example:

EWM-16-500: Stainless steel shaft (AISI 440B) with 16mm Ø, 500mm in length

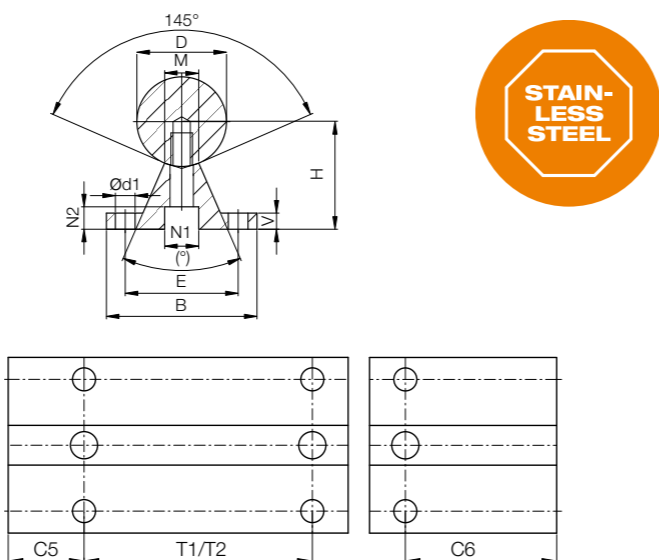


EWUM



igus® recommendation: Linear plain bearings equipped with iglidur® E7 liners for 8 times longer service life

- Completely supported and mounted with standard aluminium support
- For supported shafts:
 - ▶ Shaft support supplied in lengths of 600mm max.
 - ▶ Standard pitch T2, T1 also possible upon request
 - ▶ Symmetrical hole pitches C5 = C6



Dimensions [mm] – supported stainless steel shafts AISI 440B

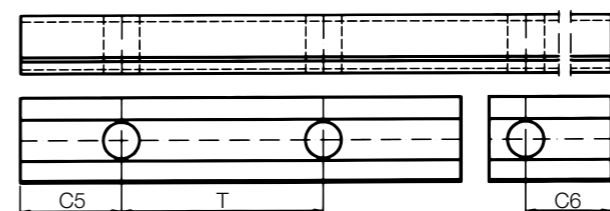
Part No.	D	B	H	V	N1	N2	d1	M	(°)	E	T1	C5/C6		T2	C5/C6		Weight
												Min.	Max.		Min.	Max.	
			±0.02								±0.15	for T1	Standard		Standard		
EWUM-12	12	40	22	5	8.0	5.0	4.5	5.8	50	29	75	20	57	120	20	79	1.75
EWUM-16	16	45	26	5	9.5	6.0	5.5	7.0	50	33	100	20	69	150	20	94	2.64
EWUM-20	20	52	32	6	11.0	6.5	6.6	8.3	50	37	100	20	69	150	20	94	3.97
EWUM-25	25	57	36	6	14.0	8.5	6.6	10.8	50	42	120	20	79	200	20	119	5.65
EWUM-30	30	69	42	7	17.0	10.5	9.0	11.0	50	51	150	20	94	200	20	119	7.93
EWUM-40	40	73	50	8	17.0	10.5	9.0	15.0	50	55	200	20	119	300	20	169	12.88
EWUM-50	50	84	60	9	19.0	12.5	11.0	19.0	46	63	200	20	119	300	20	169	19.60



Order example: EWUM-16-500-T1: Supported stainless steel shaft (AISI 440B) with 16mm outer Ø 500mm length, T1 pitch



EWUMN



Order key

Type	Size	Options
EWUMN- 20 -2000-T1		
Low level supported stainless steel shaft, metric	Outer Ø	Shaft length [mm] Hole pattern

EWUM: Supported stainless steel shaft
EWUMN: Low level supported stainless steel shaft

Available materials and lengths:
AISI 440B, max. 6,000mm

Hole pattern:
T2: T2 pitch (standard)
T1: T1 pitch (upon request)

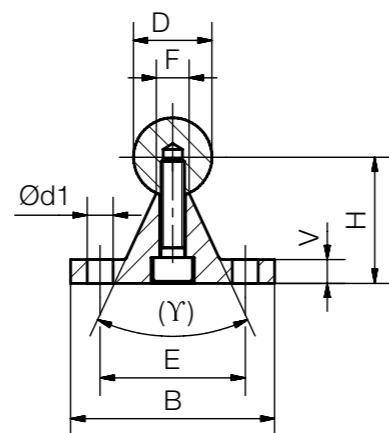
Dimensions [mm] – low level supported stainless steel shafts AISI 440B

Part No.	Outer Ø	H	H1	A	A1	A2	d1	d2	T	C5/C6		Weight
										Min.	Max.	
EWUMN-12	12	14.5	3	11	5.5	5.4	M4	4.5	75	20	57	1.62
EWUMN-16	16	18	3	14	7.0	7.0	M5	5.5	75	20	57	2.54
EWUMN-20	20	22	3	17	8.5	8.1	M6	6.6	75	20	57	3.81
EWUMN-25	25	26	3	21	10.5	10.3	M8	9.0	75	20	57	5.62
EWUMN-30	30	30	3	23	11.5	11.0	M10	11.0	100	20	69.5	7.63
EWUMN-40	40	39	4	30	15.0	15.0	M12	13.5	100	20	69.5	13.47
EWUMN-50	50	46	5	35	17.5	19.0	M14	15.5	100	20	69.5	20.31

Low level supported shafts are delivered unmounted.



Order example: EWUMN-16-500: Low level supported stainless steel shaft (AISI 440B) with 16mm outer Ø, 500mm length

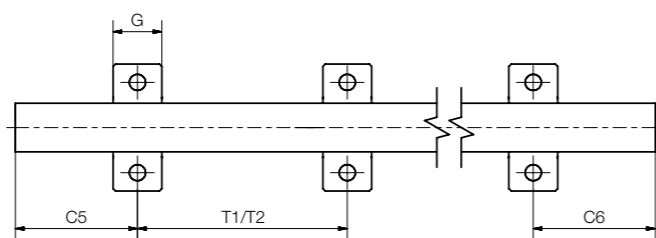
EWUM-ES/
EWUMS-ES

! igus® recommendation: Linear plain bearings equipped with iglidur® E7 liners for 8 times longer service life

Standard shaft support blocks made of stainless steel

● Connection sizes are identical to aluminium supports

► Page 1160



Dimensions [mm] – partially supported stainless steel shafts AISI 440B

Part No.	D h6	B	H ±0.02	V	d1	E	γ	F	G	T1	C5/C6 for T1		T2 Standard	C5/C6 for T2	
											Min.	Max.		Min.	Max.
EWUM-ES-12	12	40	22	5	4.5	29	–	5.8	14	75	20	57	120	20	79
EWUM-ES-16	16	45	26	5	5.5	33	–	7.0	16	100	20	69	150	20	94
EWUM-ES-20	20	52	32	6	6.6	37	50°	8.3	20	100	20	69	150	20	94
EWUM-ES-25	25	57	36	6	6.6	42	–	10.8	25	150	20	79	200	20	119
EWUM-ES-30	30	69	42	7	9.0	51	–	11.0	25	150	20	94	200	20	119
EWUM-ES-40	40	73	50	8	9.0	55	–	15.0	25	200	20	119	300	20	169

! Order example:

EWUM-ES-20-500, partially supported stainless steel shaft (shaft and support made of stainless steel), AISI 440B material, T2 pitch, outer Ø 20mm, L = 500mm



! Order key

Type Size Options

EWUMS-ES- 20 -500-T2

Partially supported stainless steel shaft, metric	Material	Outer Ø	Shaft length [mm]	Hole pattern
---	----------	---------	-------------------	--------------

Available materials and lengths:

AISI 440B, max. 6,000mm

► EWUM

AISI 316Ti, max. 3,000mm

► EWUMS

Options:

Blank: AISI 440B material

S: AISI 316Ti

Hole pattern:

T2: T2 pitch (standard)

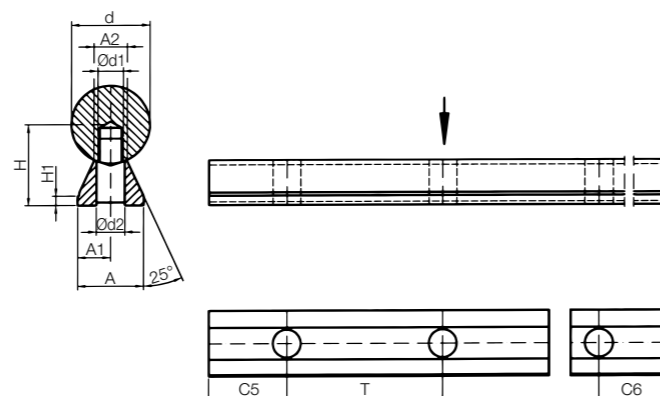
T1: T1 pitch

Dimensions [mm] – partially supported stainless steel shafts AISI 316Ti

Part No.	D h6	B	H ±0.02	V	d1	E	γ	F	G	T1	C5/C6 for T1		T2 Standard	C5/C6 for T2	
											Min.	Max.		Min.	Max.
EWUMS-ES-12	12	40	22	5	4.5	29	–	5.8	14	75	20	57	120	20	79
EWUMS-ES-16	16	45	26	5	5.5	33	–	7.0	16	100	20	69	150	20	94
EWUMS-ES-20	20	52	32	6	6.6	37	50°	8.3	20	100	20	69	150	20	94
EWUMS-ES-25	25	57	36	6	6.6	42	–	10.8	25	150	20	79	200	20	119
EWUMS-ES-30	30	69	42	7	9.0	51	–	11.0	25	150	20	94	200	20	119
EWUMS-ES-40	40	73	50	8	9.0	55	–	15.0	25	200	20	119	300	20	169

! Order example:

EWUM-ES-20-500, partially supported stainless steel shaft (shaft and support made of stainless steel), AISI 316Ti material, T1 pitch, outer Ø 20mm, L = 500mm

EWUMN-ES/
EWUMSN-ES

! igus® recommendation: Linear plain bearings equipped with iglidur® E7 liners for 8 times longer service life

Low level shaft support blocks made of stainless steel

- Connection sizes are identical to low-level aluminium supports ► **Page 1161**

Dimensions [mm] – low level partially supported stainless steel shafts AISI 440B

Part No.	d	H ±0.02	H1	A	A1	A2	d1	d2	T	C5/C6		Weight [kg/m]
										Min.	Max.	
EWUMN-ES-12	12	14.5	3	11	5.5	5.4	M4	4.2	75	20	57.0	1.00
EWUMN-ES-16	16	18.0	3	14	7.0	7.0	M5	5.2	75	20	57.0	1.76
EWUMN-ES-20	20	22.0	3	17	8.5	8.1	M6	6.2	75	20	57.0	2.77
EWUMN-ES-25	25	26.0	3	21	10.5	10.3	M8	8.2	75	20	57.0	4.35
EWUMN-ES-30	30	30.0	3	23	11.5	11.0	M10	10.2	100	20	69.5	6.01
EWUMN-ES-40	40	39.0	4	30	15.0	15.0	M12	12.5	100	20	69.5	10.80

Low-level partially supported stainless steel shafts are supplied unassembled



Order example:

EWUMN-ES-20-500: Low level partially supported stainless steel shafts. AISI 440B material, T2 pitch (standard), 20mm outer Ø, 500mm length



Order key

Type	Size	Options
EWUMSN-ES- 20 -500-T2		
Partially supported stainless steel shaft, metric	Material	Outer Ø
		Shaft length [mm]
		Hole pattern

Available materials and lengths:

AISI 440B, max. 6,000mm

► EWUMN

AISI 316Ti, max. 3,000mm

► EWUMSN

Dimensions [mm] – low level partially supported stainless steel shafts AISI 316Ti

Part No.	d	H ±0.02	H1	A	A1	A2	d1	d2	T	C5/C6		Weight [kg/m]
										Min.	Max.	
EWUMSN-ES-12	12	14.5	3	11	5.5	5.4	M4	4.2	75	20	57.0	1.00
EWUMSN-ES-16	16	18.0	3	14	7.0	7.0	M5	5.2	75	20	57.0	1.76
EWUMSN-ES-20	20	22.0	3	17	8.5	8.1	M6	6.2	75	20	57.0	2.77
EWUMSN-ES-25	25	26.0	3	21	10.5	10.3	M8	8.2	75	20	57.0	4.35
EWUMSN-ES-30	30	30.0	3	23	11.5	11.0	M10	10.2	100	20	69.5	6.01
EWUMSN-ES-40	40	39.0	4	30	15.0	15.0	M12	12.5	100	20	69.5	10.80

Low-level partially supported stainless steel shafts are supplied unassembled



Order example:

EWUMSN-ES-20-500-T2: Low-level partially supported stainless steel shaft. AISI 316Ti material, T2 pitch, outer Ø 20mm, length 500mm



CWM



Order key

Type Size Options

CWM- 12 -1000

Carbon fibre shaft	Metric	Outer Ø	Shaft length [mm]
--------------------	--------	---------	-------------------

- Material: CFK composite
- Roundness tolerance: $\pm 0.05\text{mm}$
- Diameter tolerance: -0.1mm
- Application temperature: max. $+80^{\circ}\text{C}$
- Colour: Black

Dimensions [mm]

Part No.	Design	Outer Ø -0.1	Inner Ø -0.1	Max. length	Weight [g]
CWM-12	Hollow shaft	12	9.0	2,000	70
CWM-16	Hollow shaft	16	12.5	2,000	120
CWM-20	Hollow shaft	20	16.0	2,000	170
CWM-30	Hollow shaft	30	26.0	2,000	270



Order example:

CWM-16-500: Carbon fibre shaft, 16mm outer Ø, 500mm length

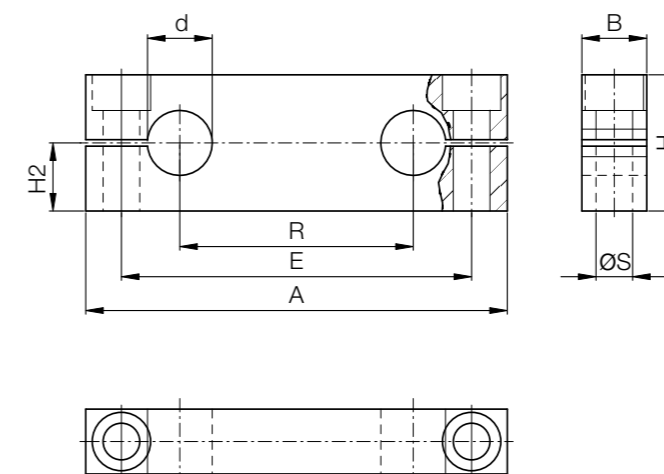


Order key

Type Size

TA -08

Shaft end support, floating	Inner Ø
-----------------------------	---------

Material: aluminium
Threaded fixing hole

Dimensions [mm]

Part No.	d	A	B	H	H2 ± 0.015	Ø S	E	R	Weight [g]
TA-08	8	65	12	22	11	M5	52	32	40
TA-10	10	70	12	21	10.5	M5	55	34	37
TA-12	12	85	14	28	14	M6	70	42	70
TA-16	16	100	18	32	16	M8	82	54	130
TA-20	20	130	20	42	21	M10	108	72	220
TA-25	25	160	25	52	26	M12	132	88	440
TA-30	30	180	25	58	29	M12	150	96	560
TA-40	40	230	30	72	36	M16	190	122	1,000



Order example:

TA-10: floating shaft end support with inner Ø 10mm



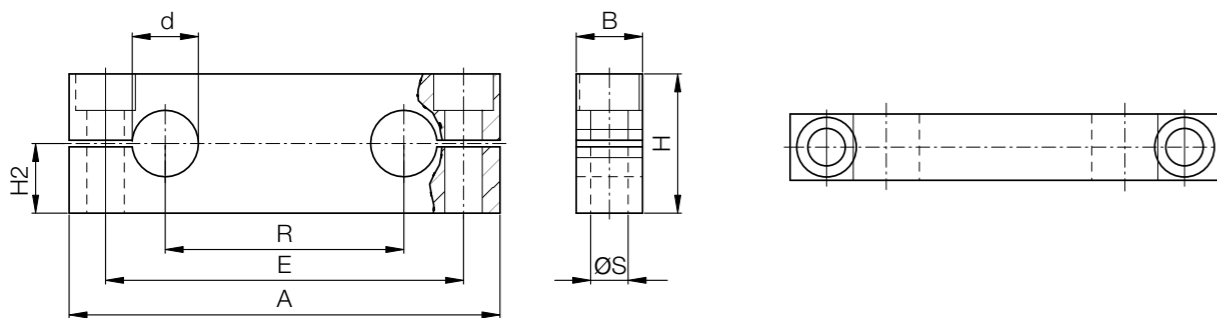
Order key

Type	Size
------	------

TA F - 08

Shaft end support	Fixed	Inner Ø
-------------------	-------	---------

Material: aluminium
Through fixing hole



Dimensions [mm]

Part No.	d	A	B	H	H2	Ø S	E	R	Weight [g]
TAF-08	8	65	12	23	±0.015 12.5	5.5	52	32	40
TAF-10	10	70	12	25	14.0	5.5	55	34	45
TAF-12	12	85	14	32	18.0	6.6	70	42	90
TAF-16	16	100	18	36	20.0	9.0	82	54	140
TAF-20	20	130	20	46	25.0	11.0	108	72	250
TAF-25	25	160	25	56	30.0	13.5	132	88	470
TAF-30	30	180	25	64	35.0	13.5	150	96	620
TAF-40	40	230	30	80	44.0	17.5	190	122	1,150

Order example:
TAF-12: fixed shaft end support with 12mm inner Ø



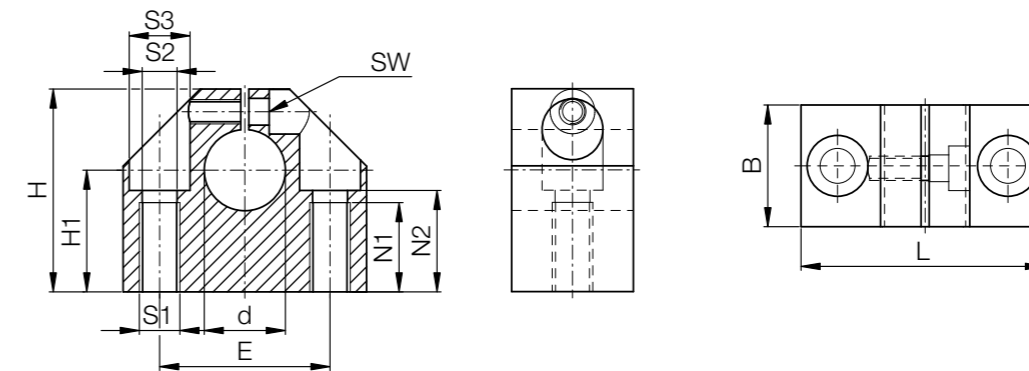
Order key

Type	Size
------	------

WA - 08

Shaft end block	Standard design	Inner Ø
-----------------	-----------------	---------


Material: aluminium



Dimensions [mm]

Part No.	d	B	H	H1	L	S1	S2	S3	E	N1	N2	SW	Weight [g]
WA-08	8	18	28	±0.02 15	32	M4	3.3	6	±0.1 22	9	13.0	2.5	40
WA-12	12	20	35	20	43	M6	5.2	10	30	13	16.5	3.0	100
WA-16	16	24	42	25	53	M8	6.8	11	38	18	21.0	4.0	150
WA-20	20	30	50	30	60	M10	8.6	15	42	22	25.0	5.0	230
WA-25	25	38	60	35	78	M12	10.3	18	56	26	30.0	6.0	410
WA-30	30	40	70	40	87	M12	10.3	18	64	26	34.0	6.0	530
WA-40	40	48	90	50	108	M16	14.25	20	82	34	44.0	8.0	990
WA-50	50	58	105	60	132	M20	17.5	26	100	43	49.0	10.0	1,250
WA-60	60	74	130	75	164	M27	22	33	124	43	59.0	10.0	2,950


Order example:
WA-08: shaft end block, standard design with inner Ø 8mm

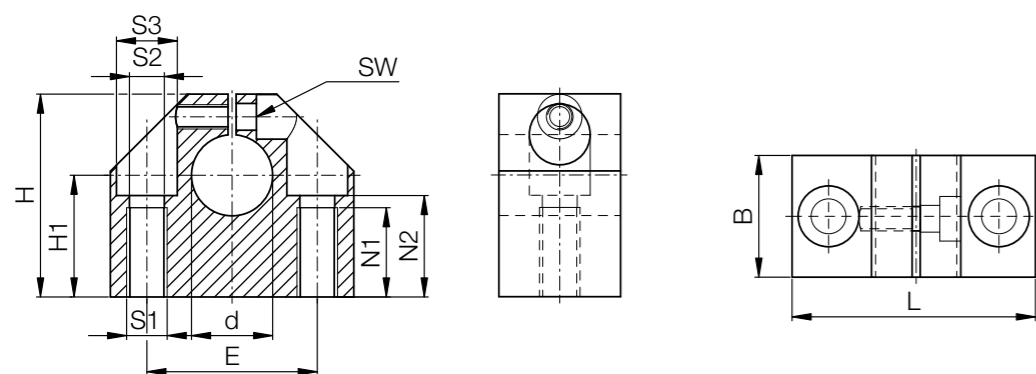
 Order key

Type	Size
------	------

WA C-06

Shaft end block	Compact design	Inner Ø
-----------------	----------------	---------

 Material: aluminium



Dimensions [mm]

Part No.	d	B	H	H1 from +0.01 to +0.02	L	S1	S2	S3	E ±0.1	N1	N2	SW	Weight [g]
WAC-06	6	16	27	15	32	M5	4.2	8	22	11	13	2.5	30
WAC-08	8	16	27	16	32	M5	4.2	8	22	11	13	2.5	30
WAC-10	10	18	33	18	40	M6	5.2	10	27	13	16	3.0	50
WAC-12	12	18	33	19	40	M6	5.2	10	27	13	16	3.0	50
WAC-14	14	20	38	20	45	M6	5.2	10	32	13	18	3.0	70
WAC-16	16	20	38	22	45	M6	5.2	10	32	13	18	3.0	70
WAC-20	20	24	45	25	53	M8	6.8	11	39	18	22	4.0	120
WAC-25	25	28	54	31	62	M10	8.6	15	44	22	26	5.0	170
WAC-30	30	30	60	34	67	M10	8.6	15	49	22	29	5.0	220
WAC-40	40	40	76	42	87	M12	10.3	18	66	26	38	6.0	480
WAC-50	50	50	92	50	103	M16	14.25	20	80	34	46	8.0	820

 Order example:


WAC-12: shaft end block, compact design with inner Ø 12mm

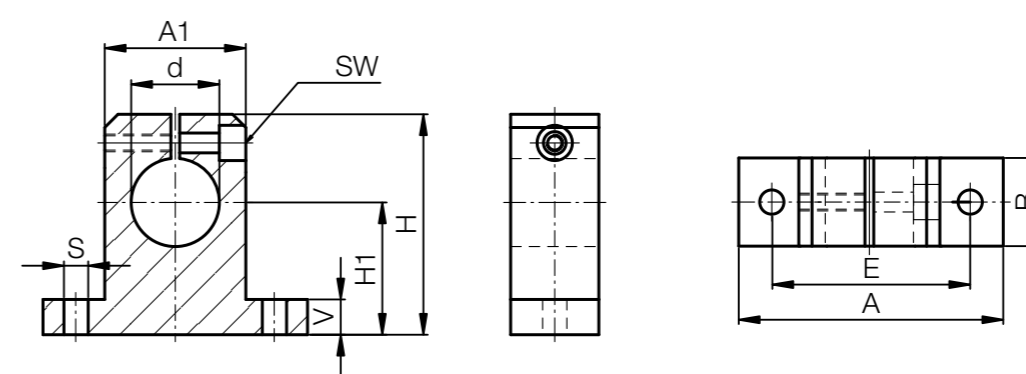
 Order key

Type	Size
------	------

WA S-08

Shaft end block	Narrow design	Inner Ø
-----------------	---------------	---------

 Material: aluminium



Dimensions [mm]

Part No.	d	H	H1 ±0.02	A	A1	B	E	S	V	SW	Weight [g]
WAS-08	8	27	15	32	16	10	25	4.5	5.0	2.5	12
WAS-12	12	35	20	42	20	12	32	5.5	5.5	3.0	23
WAS-16	16	42	25	50	26	16	40	5.5	6.5	3.0	35
WAS-20	20	50	30	60	32	20	45	5.5	8.0	4.0	67
WAS-25	25	58	35	74	38	25	60	6.6	9.0	4.0	140
WAS-30	30	68	40	84	45	28	68	9.0	10.0	5.0	200
WAS-40	40	86	50	108	56	32	86	11.0	12.0	6.0	480

 Order example:

WAS-12: shaft end block, narrow design with inner Ø 12mm

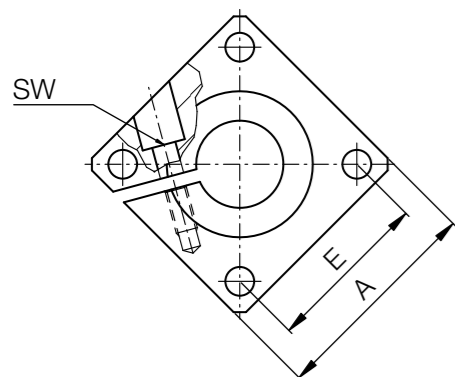
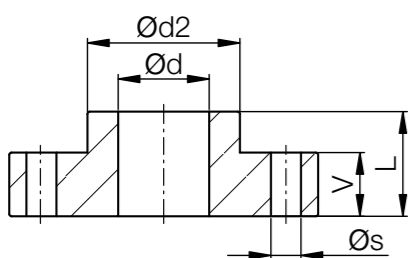
Order key

Type	Size
------	------

WA F -12

Shaft end block	With flange	Inner Ø
-----------------	-------------	---------

Material: aluminium



Dimensions [mm]

Part No.	Ø d	A	L	Ø d2	E	Ø s	V	SW	Weight [g]
WAF-12	12	40	20	23.5	30 ± 0.12	5.5	12	3	60
WAF-16	16	50	20	27.5	35 ± 0.12	5.5	12	3	80
WAF-20	20	50	23	33.5	38 ± 0.15	6.6	14	4	100
WAF-25	25	60	25	42.0	42 ± 0.15	6.6	16	5	150
WAF-30	30	70	30	49.5	54 ± 0.15	9.0	19	6	300
WAF-40	40	100	40	65.0	68 ± 0.25	11.0	26	8	700
WAF-50	50	100	50	75.0	75 ± 0.25	11.0	36	8	1,200

Order example:
WAF-16: Flange shaft support with inner Ø 16mm

Expert for linear guides: System selection and service life calculation with CAD

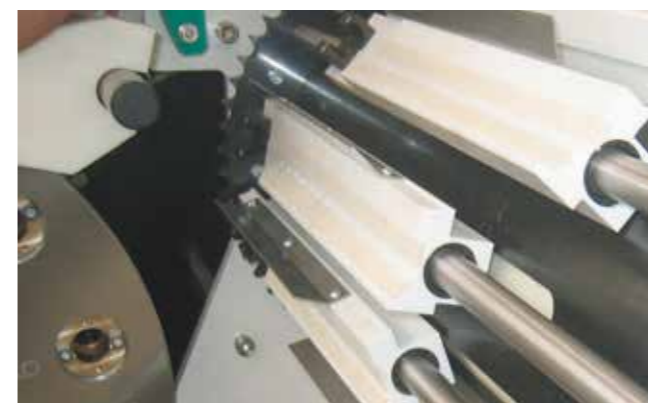
Configure linear bearings and calculate their service life – constantly expanded by new sizes and products. Easily calculate the service life of your required linear guide and configure with a few clicks. Select a drylin® system and add the relevant environmental parameters. Select the bearing size, carriage, number and position. Then enter the distance between the rails and the mounting. Define more relevant parameter of the guidance and select a rail length. The results are displayed.



www.igus-asean.com/drylin-expert



Download the online tool app now



Aluminium shafts in combination with iglidur® J enable high speeds due to the lightweight.



Stainless steel shafts combined with iglidur® X, offer maximum resistance at +120°C. Cleaning in filling machine.



Stainless steel combined with iglidur® J in cut-off grinding machine. Grinding particles and coolants, extreme conditions.



Cost-effective guide for work piece carriage in a machine tool with supported aluminium shaft.