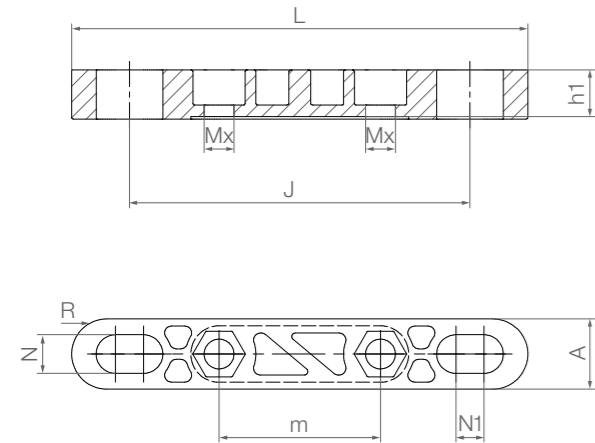


Adapters for dimensional E series pillow block bearings



- Same dimensions as metallic pillow block bearings
- Lightweight
- For pillow block bearings of dimensional E series (ESTM, ESTM-GT)
- Chemical and corrosion-resistant
- Fits directly
- Space-saving
- Same screws as traditional metallic versions

Technical data

Part No.	Max. radial tensile force [Fz]		Max. radial compressive strength [Fd]		Max. lateral strength [Fs]		Max. axial strength [Fa] (tensile/compressive)		Weight [g]
	Short-term	Long-term	Short-term	Long-term	Short-term	Long-term	Short-term	Long-term	
	[N]	[N]	[N]	[N]	[N]	[N]	[N]	[N]	
AD-01-ESTM-20 <sup>26)</sup>	2,400	1,200	10,000	5,000	3,000	1,500	1,200	600	29.8
AD-01-ESTM-25 <sup>27)</sup>	2,400	1,200	10,000	5,000	3,000	1,500	1,200	600	74.0
AD-01-ESTM-30 <sup>27)</sup>	2,400	1,200	10,000	5,000	3,000	1,500	1,200	600	124.0

Dimensions [mm]

Part No.	for ESTM-...	L	A	R	J	h1	N	N1	m	Mx
AD-01-ESTM-20 <sup>26)</sup>	ESTM-20	130	20	10.0	97	13.3	11	8	46	M8
AD-01-ESTM-25 <sup>27)</sup>	ESTM-25	130	20	10.0	102	12.5	11	9	54	M8
AD-01-ESTM-30 <sup>27)</sup>	ESTM-30	158	25	12.5	118	14.9	14	10	64	M10

<sup>26)</sup> Material: plastic (igumid G)

<sup>27)</sup> Material: aluminium

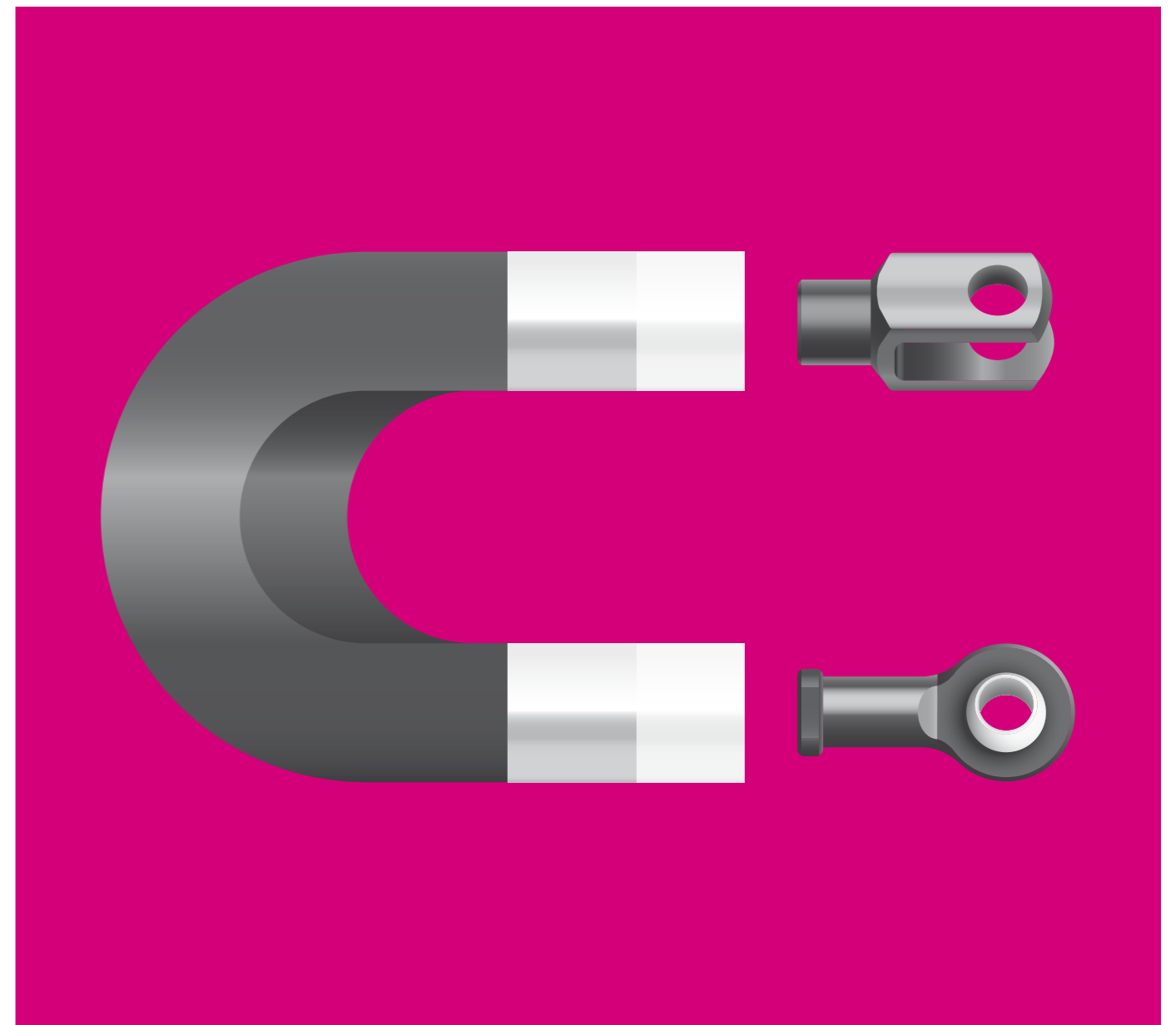
Can be combined with:



Order key

Type	Size [mm]
------	-----------

AD-01- E ST M -20



igubal® detectable

Resistant to dust and dirt

Lubrication and maintenance-free

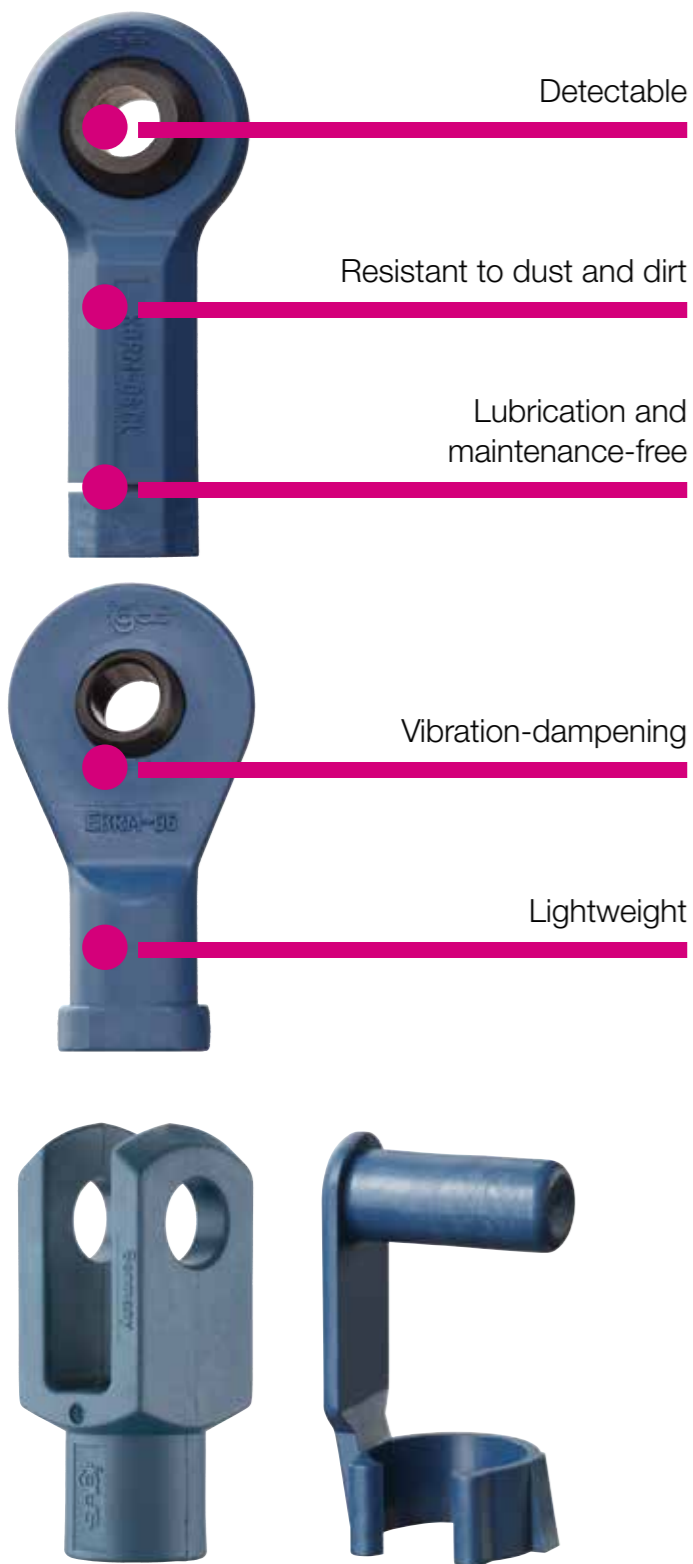
Vibration-dampening

Lightweight

Corrosion-free



Following igubal® bearings can be found quickly in case of accidental damage of the system through metal detectable material. Even the smallest fragment can be found by metal detectors.



**When to use it?**

- When particles should be detectable
- If you need maintenance-free material
- When dimensional E and K series components should be fitted
- If high compressive strength is required



**When not to use it?**

- When temperatures are higher than +80°C
- When diameters above 16mm are required
- When rotation speeds higher than 0.5m/s are required



**Available from stock**

Detailed information about delivery time online.



**Price breaks online**

No minimum order value. No minimum order quantity



Max. +80°C  
Min. -30°C



4 types  
Ø 4-16mm



Online product finder  
▶ [www.igus.eu/igubal-finder](http://www.igus.eu/igubal-finder)

**Available from stock**



**Upon request**

**Rod ends**



**Pillow block bearings**


**Fixed flange bearing**



**Spherical bearings**



Rod ends with female thread, detectable:  
KBRM-CL-DT and KBLM-CL-DT

 Order key

Type	Size [mm]	Version
<b>K B</b> □ <b>M-06-CL-DT</b>		
<b>K series</b>		
Housing (female thread)		
Thread		
Metric		
Inner Ø		
2nd generation		
Detectable		

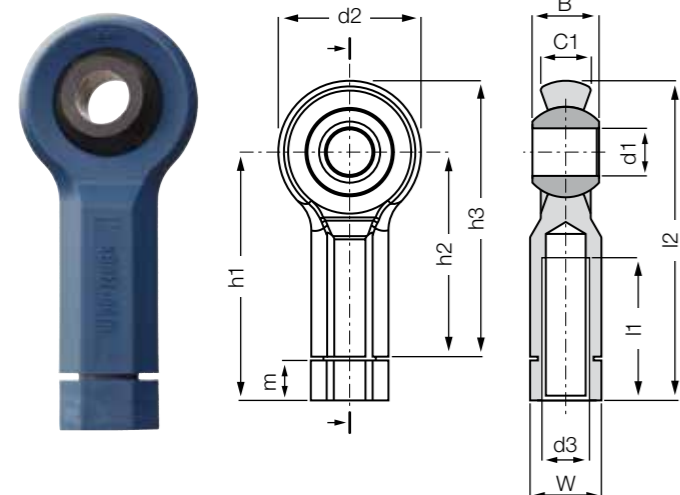
Options:

Thread

- L = Left-hand thread
- R = Right-hand thread

 Material:

Housing: **RN246** ▶ Page 1657  
Spherical ball: **RN248KM** ▶ Page 854



- Smooth design no dirt traps
- Compensation of misalignment errors
- Lightweight
- Absolute corrosion resistance
- Dimensional K series according to DIN ISO 12240

Technical data

Part No.	Max. static tensile strain		Max. static axial force		Min. thread depth Thread	Max. tightening torque Female thread	Max. tightening torque through ball Standard without stainless steel sleeve	Weight [g]
	Short-term	Long-term	Short-term	Long-term				
	[N]	[N]	[N]	[N]				
<b>KB</b> □ <b>M-06-CL-DT</b>	980	490	210	105	8	0.8	10	4.5

Dimensions [mm]

Part No.	d1 E10	d2	d3	W	B	C1	h3	h1	h2	l1	l2	m	Max. pivot angle
<b>KB</b> □ <b>M-06-CL-DT</b>	6	20	M6	SW10	9	7	40	36.5	30	20	46.5	5.7	40°

Rod ends with female thread, detectable:  
EBRM-DT and EBLM-DT

 Order key

Type	Size [mm]	Version
<b>E B</b> □ <b>M-04-DT</b>		
<b>E series</b>		
Housing (female thread)		
Thread		
Metric		
Inner Ø		
Detectable		

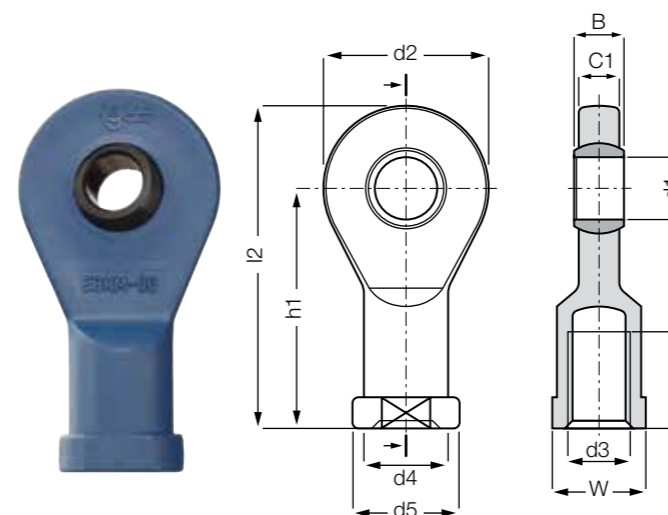
Options:

Thread

- L = Left-hand thread
- R = Right-hand thread

 Material:

Housing: **RN246** ▶ Page 1657  
Spherical ball: **RN248EM** ▶ Page 854



- Smooth design no dirt traps
- Spherical ball is clipped in
- Compensation of misalignment errors
- Lightweight
- Absolute corrosion resistance

Technical data

Part No.	Max. static tensile strain		Max. static axial force		Min. thread depth Thread	Max. tightening torque Female thread	Max. tightening torque through ball	Weight [g]
	Short-term	Long-term	Short-term	Long-term				
	[N]	[N]	[N]	[N]				
<b>EB</b> □ <b>M-04-DT</b>	560	280	70	35	7	0.4	2.0	1.8
<b>EB</b> □ <b>M-05-DT</b>	910	455	105	52	8	0.5	2.0	3.2
<b>EB</b> □ <b>M-06-DT</b>	1,050	525	140	70	8	1.5	2.5	4.0
<b>EB</b> □ <b>M-08-DT</b>	1,400	700	315	157	11	5.0	7.0	6.9
<b>EB</b> □ <b>M-10-DT</b>	1,610	805	350	175	13	15.0	14.0	11.2

Dimensions [mm]

Part No.	d1 E10	d2	d3	d4	d5	C1	B	h1	l1	l2	W	Max. pivot angle
<b>EB</b> □ <b>M-04-DT</b>	4	15	M4	-	-	3.5	5	22.5	9.5	30.0	SW8	33°
<b>EB</b> □ <b>M-05-DT</b>	5	19	M5	9.0	11	4.4	6	30.0	12	39.5	SW9	33°
<b>EB</b> □ <b>M-06-DT</b>	6	21	M6	11.0	13	4.4	6	30.0	8	40.5	SW11	27°
<b>EB</b> □ <b>M-08-DT</b>	8	24	M8	13.0	16	6.0	8	36.0	14	48.0	SW14	24°
<b>EB</b> □ <b>M-10-DT</b>	10	29	M10	15.0	19	7.0	9	43.0	18	57.5	SW17	24°

Clevis joints, detectable:  
GERM-DT and GELM-DT

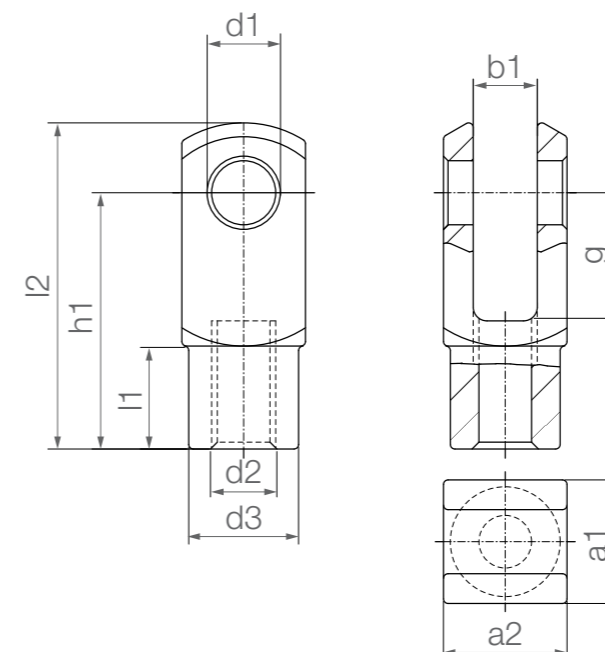


- Resistant to dust and dirt
- Maintenance and lubrication-free
- Vibration-dampening
- Lightweight

Technical data

Part No.	Max. static tensile strain		Max. static axial force		Weight [g]
	Short-term	Long-term	Short-term	Long-term	
	[N]	[N]	[N]	[N]	
GE□M-04-DT	455	227.5	175	87.5	0.9
GE□M-05-DT	840	420	175	87.5	2.7
GE□M-06-DT	980	490	210	105	2.5
GE□M-08-DT	1,890	945	455	227.5	6.3
GE□M-10-DT	3,290	1,645	560	280	13.2
GE□M-10-DT-F	3,290	1,645	560	280	13.2
GE□M-12-DT	3,990	1,995	630	315	20.2
GE□M-12-DT-F	3,990	1,995	630	315	20.2

Clevis joints, detectable:  
GERM-DT and GELM-DT



Order key

Type	Size [mm]	Version
<b>GE□M-04-DT</b>		
Clevis joint	E series	Thread
	Metric	Inner Ø
		Detectable

Options:

Thread

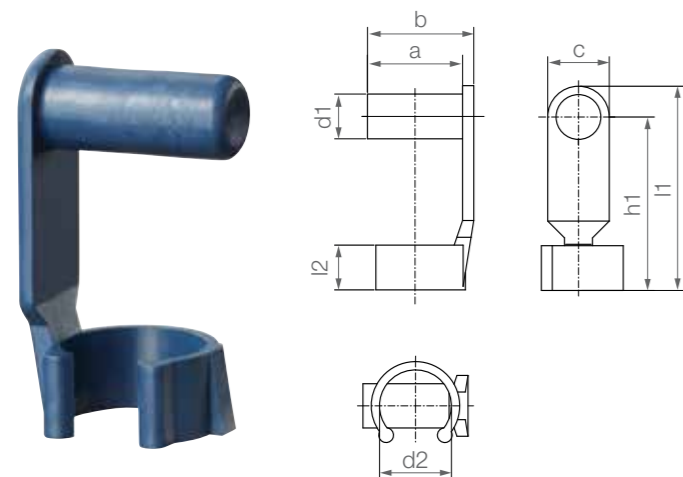
- L = Left-hand thread
- R = Right-hand thread

**i** Material:  
RN246 ► Page 1657

Dimensions [mm]

Part No.	d1	g	a1	a2	b1	d2	d3	l2	h1	l1
	H9	h11	+0.3 -0.16	+0.3 -0.16	B13	Thread tolerance	±0.3	±0.5	±0.3	±0.2
						6H				
GE□M-04-DT	4	8	8	8	4	M4	8	21.0	16	6
GE□M-05-DT	5	12	12	12	6	M5	10	30.6	24	9
GE□M-06-DT	6	12	12	12	6	M6	10	30.6	24	9
GE□M-08-DT	8	16	16	16	8	M8	14	41.6	32	12
GE□M-10-DT	10	20	20	20	10	M10	18	51.3	40	15
GE□M-10-DT-F	10	20	20	20	10	M10 x 1.25	18	51.3	40	15
GE□M-12-DT	12	24	24	24	12	M12	20	61.3	48	18
GE□M-12-DT-F	12	24	24	24	12	M12 x 1.25	20	61.3	48	18

Spring-loaded fixing clips, detectable:  
GEFM-DT



Order key

Type	Size [mm]	Version
<b>G E F M - 04 -DT</b>		
Clevis joint	E series	Spring-loaded fixing clip
	Metric	
	Inner Ø	Detectable

Material:  
RN246 ▶ Page 1657

- Resistant to dust and dirt
- Maintenance and lubrication-free
- Vibration-dampening
- Lightweight

Dimensions [mm]

Part No.	d1	d2	a	b	c	l1 ±0.5	h1	l2	Weight [g]
GEFM-04-DT	4	8	9.5	10.5	8	19.0	15	4.5	0.5
GEFM-05-DT	5	10	14.0	15.5	8	27.0	23	6.5	1.1
GEFM-06-DT	6	10	14.0	15.5	8	27.0	23	6.5	1.2
GEFM-08-DT	8	14	19.0	21.0	11	35.5	30	8.0	2.8
GEFM-10-DT	10	18	23.0	25.5	14	45.0	38	10.0	5.0
GEFM-12-DT	12	20	28.0	31.0	16	53.0	45	12.0	8.3

Clevis joints with spring-loaded fixing clips,  
detectable: GERMF-DT and GELMF-DT



Order key

Type	Size [mm]	Version
<b>G E □ M F - 04 -DT</b>		
Clevis joint	E series	Spring-loaded fixing clip
	Thread	
	Metric	
	Inner Ø	Detectable

Options:  
Thread  
L = Left-hand thread  
R = Right-hand thread

Material:  
RN246 ▶ Page 1657

- Resistant to dust and dirt
- Maintenance and lubrication-free
- Vibration-dampening
- Lightweight

Technical data

Part No.	Max. static tensile strain		Max. static axial force		Weight [g]
	Short-term [N]	Long-term [N]	Short-term [N]	Long-term [N]	
GE□MF-04-DT	350	175	175	87.5	1.3
GE□MF-05-DT	630	315	175	87.5	3.8
GE□MF-06-DT	910	455	210	105.0	3.9
GE□MF-08-DT	1,470	735	455	227.5	9.1
GE□MF-10-DT	2,100	1,050	560	280.0	18.2
GE□MF-10-DT-F	2,100	1,050	560	280.0	18.2
GE□MF-12-DT	2,450	1,225	630	315.0	28.6
GE□MF-12-DT-F	2,450	1,225	630	315.0	28.6



Individual components: Clevis joint GERMF-DT and spring-loaded fixing clip GEFM-DT  
▶ Page 868 and 870