



Order key

Part number

MH-1210-AL-TR10X2-R-J

Lead screw nut housings	Nut design (see drawing)	Aluminium	Thread size	Right-hand thread	iglidur® J nut
-------------------------	-----------------------------	-----------	-------------	-------------------	----------------

- Standard lead screw nuts secured with fixing screws
- Can be fixed from above
- One housing is suitable for many thread geometries
- Limitless combinations

MHM-2835-AL-□ / MHM-3244-AL-□



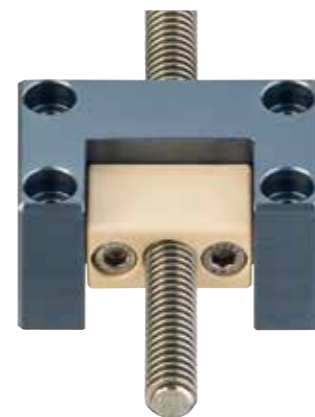
MHM-ZB0810-AL-□



MHM-2018-AL-□

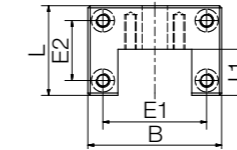
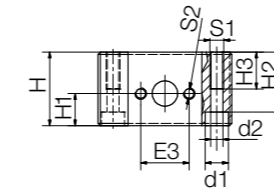


MHM-1210-AL-□

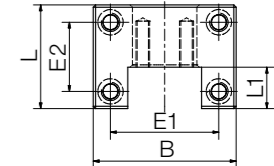
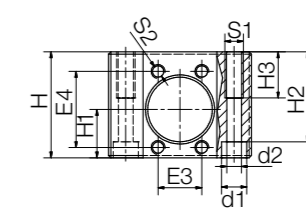


i Please use MHM (Assembled lead screw nut housing, including lead screw nut) for fully assembled systems. Order example: MHM-1210-AL-TR10x2-R-J

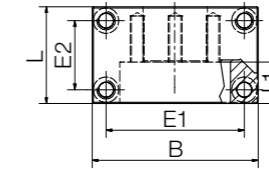
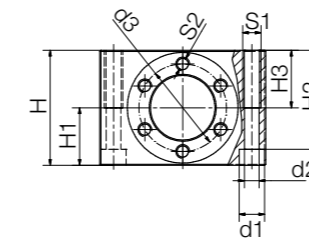
MH-1210-AL



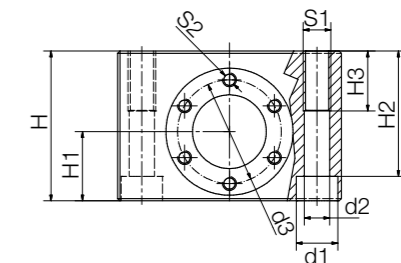
MH-2018-AL



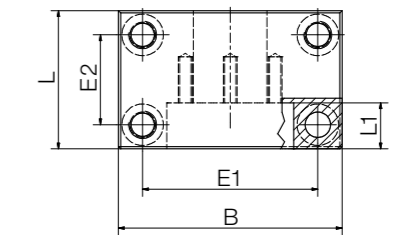
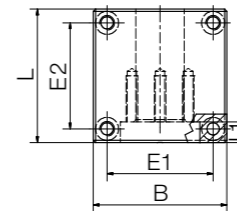
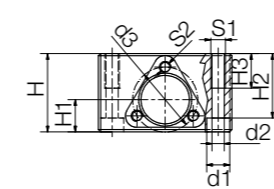
MH-2835-AL



MH-3244-AL



MH-ZB0810-AL



Dimensions [mm]

Part No.	H	H1	H2	H3	S1	S2	B	L	L1	E1	E2	E3	E4	d1	d2	d3	Can be combined with SLS
							±0.3	±0.3		±0.15	±0.15						
MH-1210-AL	32	14	26	16	M6	M5	58	39	20	45	26	21	-	10	5.3	-	●
MH-2018-AL	46	21	39	20	M8	M6	62	45	18	47	30	19	33	11	6.4	-	●
MH-2835-AL	50	25	43	25	M8	M6	72	42	18	60	30	-	-	11	6.4	38	-
MH-3244-AL	65	30	54.4	26	M12	M6	97	60	20	76	39	-	-	18	11	45	●
MH-ZB0810-AL	34	14	28	15	M6	M5	58	34	9	46	46	-	-	10	5.3	28.2	●

Part No.	Nut design	Thread size
MH-1210-AL	SHT-1210-TRM	Tr10x2 / Tr10x3 / Ds10x12 / Ds10x50
MH-2018-AL	SHT-2018-TRM	Tr18x4 / Tr18x8P4 / Ds18x24 / Ds18x100
MH-2835-AL	FRM-2835	Tr12x3 / Tr12x6P3 / Ds12x25 / Tr14x3 / Tr14x4 / Tr16x2 / Tr16x4 / Tr16x8P4 / Tr18x4 / Tr18x8P4 / Ds18x24 / Ds18x100
MH-3244-AL	FRM-3244	Tr20x4 / Tr20x8P4 / Tr24x5
MH-ZB0810-AL	Zero-backlash	Ds08x10 / Ds08x15 / Ds10x12 / Ds10x50