

Compact design



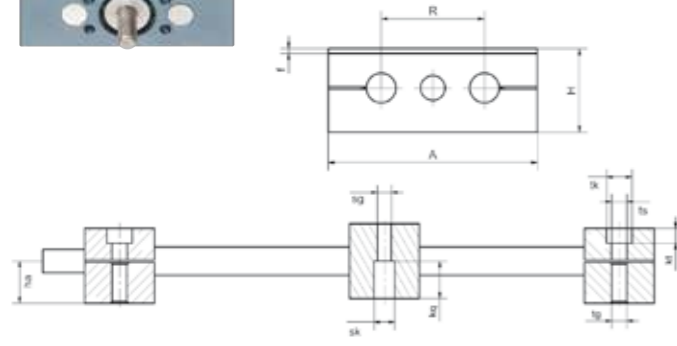
- Design flexibility
- Ideal for 2 carriages
- Adjustable bearing clearance
- Available accessories
 - ▶ Page 1503
- Lead screw nuts are available separately ▶ Page 1330
- Available with motor

Order key

Order example

SHTC-12-AWM

Variable	Installation size	Shaft material
----------	-------------------	----------------



Configure online
▶ www.igus-asean.com/drylin-sht-configurator

Technical data and dimensions [mm]

Part No.	Max. stroke length [mm]	Aluminium shaft		Steel shaft		Max. static load capacity	
		Weight [kg]	Additional (per 100mm) [kg]	Weight [kg]	Additional (per 100mm) [kg]	axial [N]	radial [N]
SHTC-08-AWM	300	0.2	0.05	0.23	0.1	100	360
SHTC-12-AWM	750	0.7	0.1	0.8	0.2	700	2,800
SHTC-20-AWM	1,000	1.9	0.3	2.3	0.6	1,600	6,400
SHTC-30-AWM	1,250	4.6	0.6	5.8	1.4	2,500	10,000
SHTC-40-SWMH	1,500	11.0	0.9	16.0	2.4	4,000	16,000
SHTC-50-SWMH	1,500	17.0	1.2	26.3	3.5	6,250	25,000

Part No.	A	Al	H	E1	E2	I	R	f	It	tk	ts	tg
SHTC-08-AWM	65	38	52	55	55	69	32	1.5	15.5	10	5.5	M6
SHTC-12-AWM	85	30	34	70	73	90	42	2	30	11	6.6	M8
SHTC-20-AWM	130	36	48	108	115	108	72	2	36	15	9.0	M10
SHTC-30-AWM	180	50	68	150	158	150	96	4	50	20	13.5	M16
SHTC-40-SWMH	230	70	84	202	202	210	122	4	70	20	13.5	M16
SHTC-50-SWMH	280	80	100	250	250	240	152	4	80	20	13.5	M16

Part No.	kt ±0.1	sk	sg	kq	d	T	l2	d2	ha
SHTC-08-AWM	7	8	M5	4.6	8	Tr6x2	17	Tr6x2	13
SHTC-12-AWM	6.4	10	M6	6.0	12	Tr10x2 ¹⁵⁷⁾	17	Tr10x2 ^{92) 157)}	18
SHTC-20-AWM	8.6	11	M8	7.0	20	Tr18x4	26	12h9	23
SHTC-30-AWM	12.6	18	M12	10.6	30	Tr24x5	38	14h9	36
SHTC-40-SWMH	12.6	20	M16	39	40	Tr26x5	45	16h9	44
SHTC-50-SWMH	12.6	20	M16	49	50	Tr30x6	50	20h9	52

⁹²⁾ Lead screw end unmachined; ¹⁵⁷⁾ Also available with with Tr10x3

The fast one with dryspin® high helix thread



- Pitch Ds10x12, Ds10x50, Ds18x100
- High-speed solution
- Available accessories
 - ▶ Page 1503
- Lead screw nuts are available separately ▶ Page 1330
- Available with motor



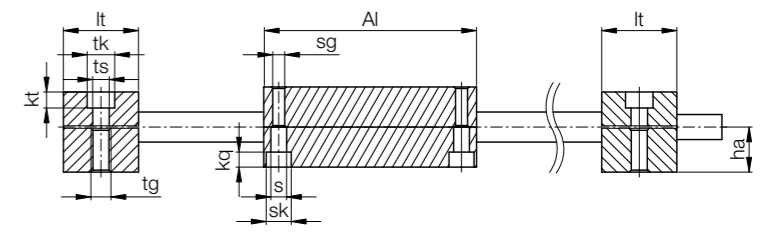
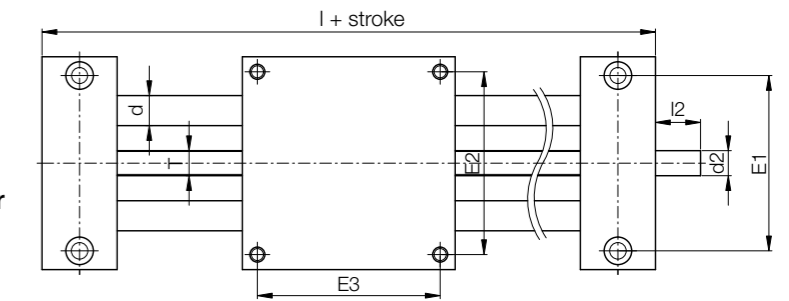
Configure online
▶ www.igus-asean.com/drylin-sht-configurator

Order key

Order example

SHT S-12-AWM-10x12

Standard	High helix thread	Dimension	Shaft material	Pitch
----------	-------------------	-----------	----------------	-------



Technical data and dimensions [mm]

Part No.	Max. stroke length [mm]	Aluminium shaft		Max. static load capacity	
		Weight [kg]	Additional (per 100mm) [kg]	axial [N]	radial [N]
SHTS-12-AWM-10x12	750	1.1	0.1	100	400
SHTS-12-AWM-10x50	750	1.1	0.1	100	400
SHTS-20-AWM-18x100	1,000	3.2	0.3	400	1,600

Dimensions [mm]

Part No.	A	Al	H	E1	E2	E3	I	R	f	It	tk	ts	tg
SHTS-12-AWM-10x12	85	85	34	70	73	73	145	42	2	30	11	6.6	M8
SHTS-12-AWM-10x50	85	85	34	70	73	73	145	42	2	30	11	6.6	M8
SHTS-20-AWM-18x100	130	130	48	108	115	115	202	72	2	36	15	9.0	M10

Part No.	kt ±0.1	s	sk	sg	kq	d	T	l2	d2	ha
SHTS-12-AWM-10x12	6.4	6.3	10	M6	6.0	12	10x12	17	Ds10x12 ⁹²⁾	18
SHTS-12-AWM-10x50	6.4	6.3	10	M6	6.0	12	10x50	17	Ds10x50 ⁹²⁾	18
SHTS-20-AWM-18x100	8.6	6.4	11	M8	7.0	20	18x100	26	12h9	23

⁹²⁾ Lead screw end unmachined